

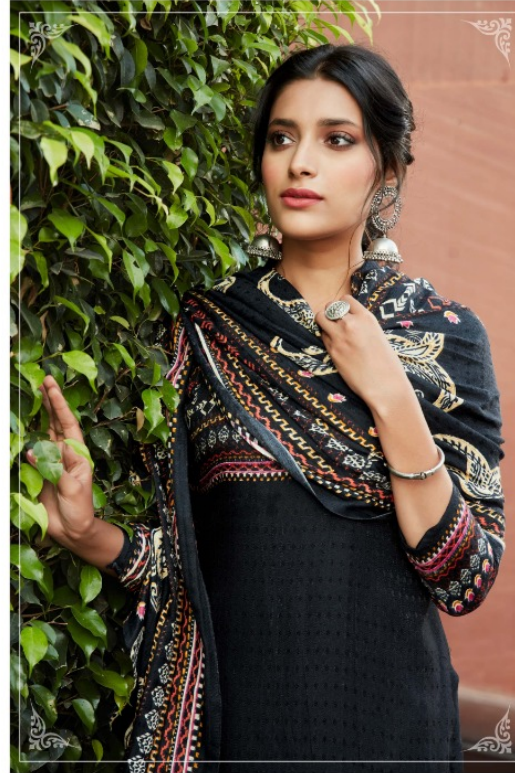
Winter Breeze

BETHEMOSTSTUNNINGBEAUTY



 **Zulfat**
Designer Saree





THE ETHNIC ELEMENTS OF INDIAN FASHION FROM TRADITIONAL MOTIFS TO CUSTOMARY ESSENTIAL
HINTS OF FOLK AND VIBRANT REGIONAL COLOURS.

212-008

THE ETHNIC ELEMENTS OF INDIAN FASHION
FROM I RAIJ (RAJASTHANI) MOTIFS TO
CUSTOMARY ESSENTIAL HINTS OF LOCAL
AND VIBRANT REGIONAL COLORS.
212-005





THE ETHNIC ELEMENTS OF INDIAN
FASHION FROM TRADITION TO THE
CONTEMPORARY WITH THE
HINTS OF FOLK AND VIBRANT
REGIONAL COLORS
212-010



212-009
THE ETHNIC ELEMENTS OF INDIAN FASHION FROM TRADITIONAL
MOTIFS TO CUSTOMARY ESSENTIAL HINTS OF FOLK AND VIBRANT REGIONAL COLOURS.





THE ETHNIC ELEMENTS OF INDIAN FASHION FROM TRADITIONAL MOTIFS TO CUSTOMARY ESSENTIAL HINTS OF FOLK AND VIBRANT REGIONAL COLOURS.

212-007





THE ETHNIC ELEMENTS OF INDIAN
FASHION FROM TRADITIONAL MOTIFS TO
CUSTOMARY ESSENTIALS.
HINTS OF REGAL AND VERSATILE
REGIONAL CLOTHING.
212-002







THE ETHNIC ELEMENTS OF INDIAN FASHION FROM TRADITIONAL MOTIFS TO CUSTOMARY
ESSENTIAL HUES OF FOLK AND VIBRANT REGIONAL COLOURS.

212-003



212-001



212-002



212-003



212-004



212-005



212-006



212-007



212-008



212-009



212-010

Winter Breeze
Zulfat®
Designer Suits