





**ABEELA**

**ZAHA**

**D.No.10362-B**

**TOP**

ORGANZA EMBROIDERY WORK

**BOTTOM**

SANTOON

**DUPATTA**

ORGANZA EMBROIDERY

**CARE INSTRUCTIONS**

- ☞ Dry clean only
- ☞ Do not use any bleaching agent or any chemical
- ☞ Iron the fabric at moderate temperature
- ☞ Do not dry fabric in direct sunlight



**ABEELA**

**ZAHA**

**D.No.10362-C**

**TOP**

ORGANZA EMBROIDERY WORK

**BOTTOM**

SANTOON

**DUPATTA**

ORGANZA EMBROIDERY

**CARE INSTRUCTIONS**

- ☞ Dry clean only
- ☞ Do not use any bleaching or ironing agents
- ☞ Wash the fabric at moderate temperature
- ☞ Do not dry fabric in direct sunlight



**ABEELA**

**ZAHA**

**D.No.10362-D**

**TOP**

ORGANZA EMBROIDERY WORK

**BOTTOM**

SANTOON

**DUPATTA**

ORGANZA EMBROIDERY

**CARE INSTRUCTIONS**

- ☞ Dry clean only
- ☞ Do not use any bleaching agent or any chemical
- ☞ Wash the fabric at moderate temperature
- ☞ Do not dry fabric in direct sunlight



**ABEELA**

**ZAHA**

**D.No.10362-A**

**TOP**

ORGANZA EMBROIDERY WORK

**BOTTOM**

SANTOON

**DUPATTA**

ORGANZA EMBROIDERY

**CARE INSTRUCTIONS**

- ☞ Dry clean only
- ☞ Do not use any bleaching agent or any chemical
- ☞ Wash the fabric at moderate temperature
- ☞ Do not dry fabric in direct sunlight

# ABEELA

  
**ZAHA**

TOP  
ORGANZA EMBROIDERY WORK

BOTTOM  
SANTOON

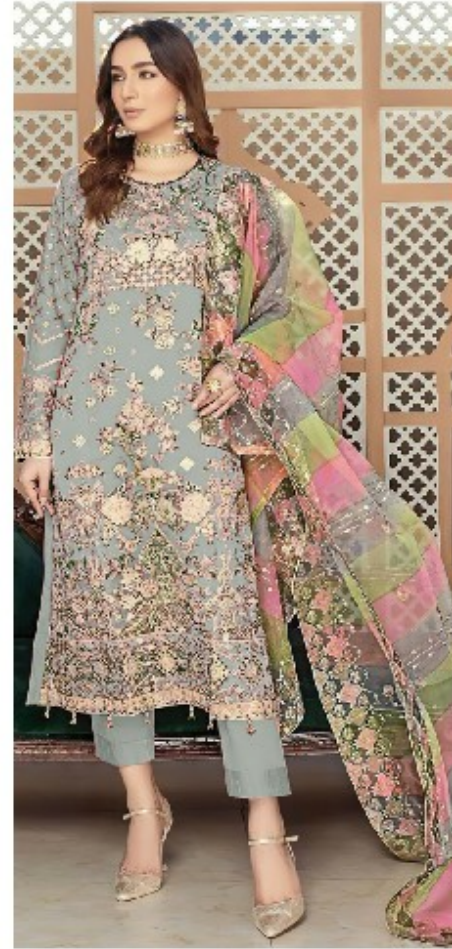
DUPATTA  
ORGANZA EMBROIDERY



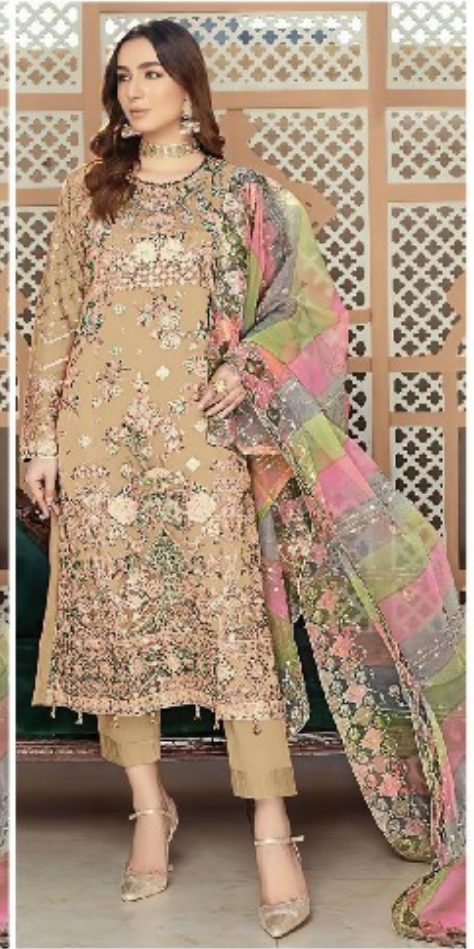
10362-A



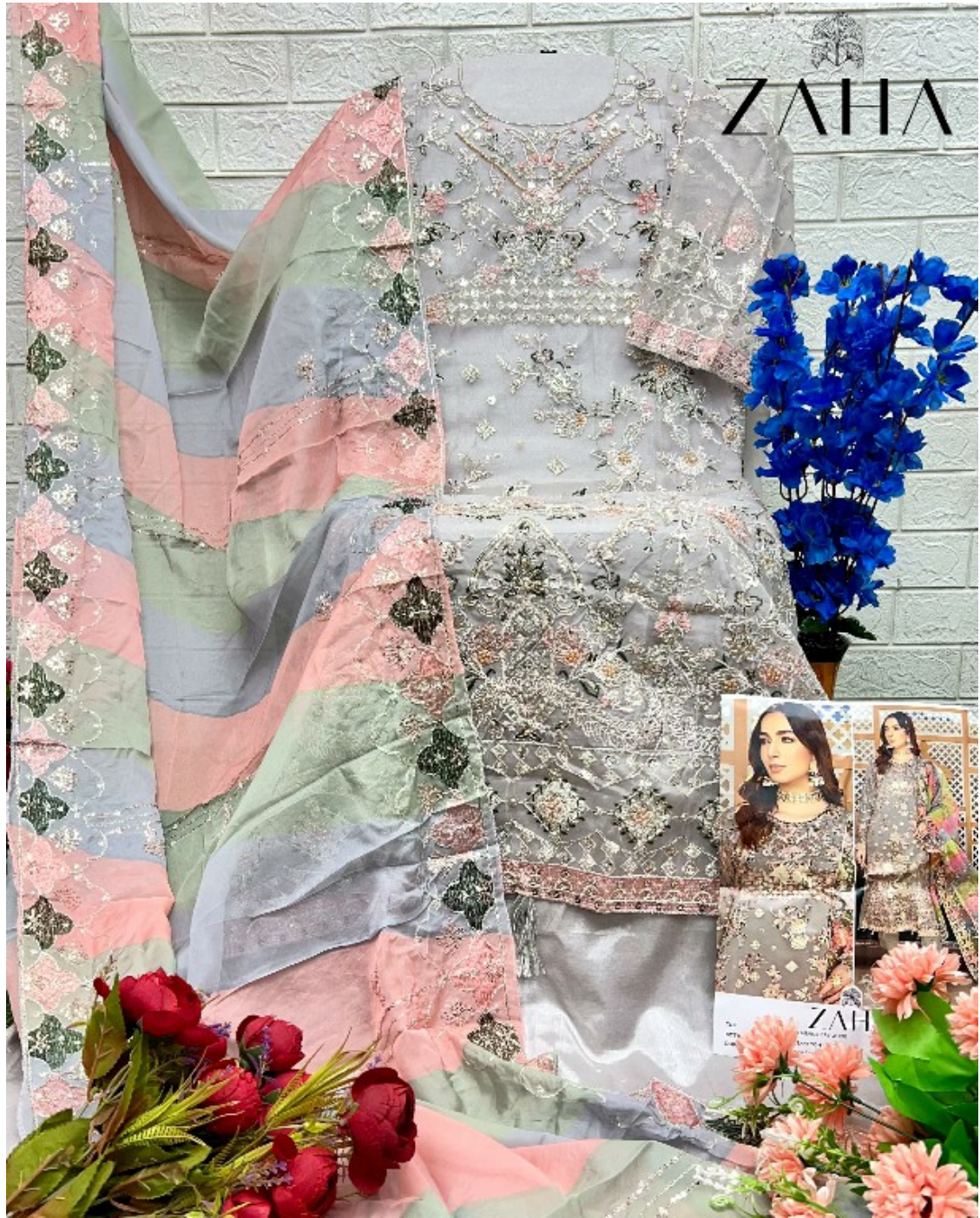
10362-B



10362-C



10362-D





TOP  
SOT  
Dup  
**ZAH**  
EMBROIDERY WORK  
SANTOOR











