



DESCRIPTION :

Step into the spotlight with our golden Raji Silk fabric jacket. The sleeveless design and detailed edging exude sophistication, making it perfect for both day and night events. It took 3 hours to stitch this master piece.

STYLING TIPS :

- Pair with white trousers for a chic look.
- Add minimal gold jewelry to enhance the elegance.
- Suitable for evening parties and formal occasions.

PASSIONATE PINK CHARM



DRS-31

DESCRIPTION :

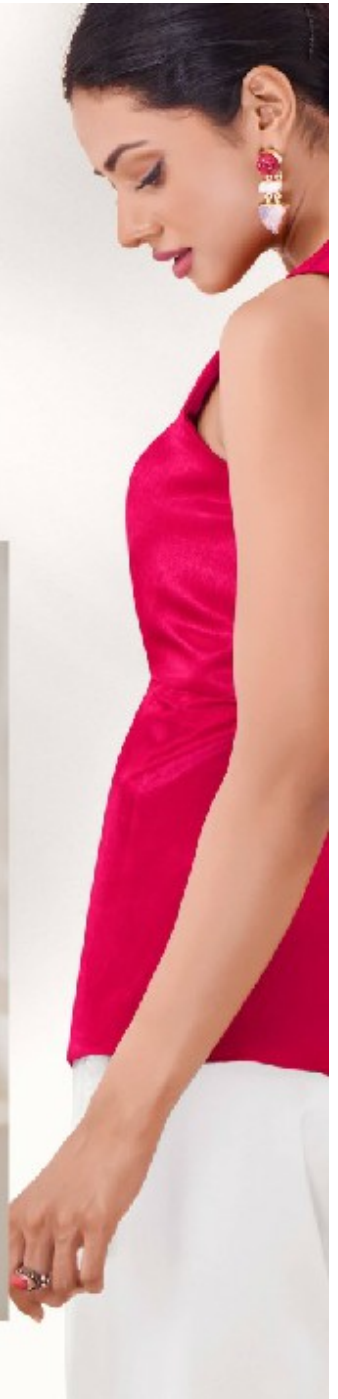
Beeline borders with a red Gaj Silk fabric jacket. The sleeveless cut and asymmetrical design creates a modern silhouette that's both caring and delightful. The asymmetrical hemline adds a modern twist to the traditional design, creating a flattering silhouette that enhances the wearer's natural curves.

STYLING TIPS :

Pair with white palazzo pants for a striking contrast.

Add red heels to complete the outfit.

Perfect for date nights and cocktails parties.



PASSIONATE PINK CHARM



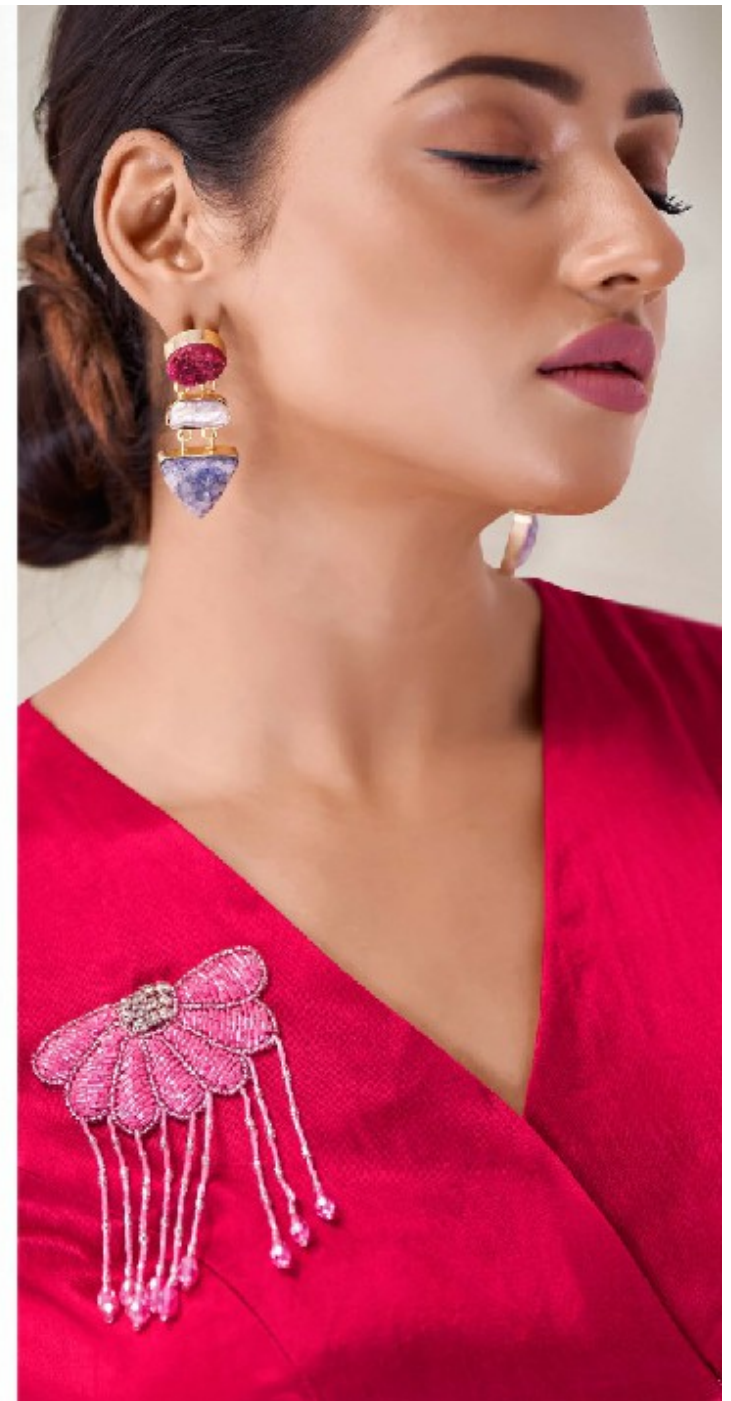
DRS-31

DESCRIPTION:

Define boldness with our red Geil Silk fabric jacket. The sleekness and our asymmetrical design create a modern silhouette that's both daring and delightful. The asymmetrical neckline adds a modern twist to the traditional design, creating a flattering silhouette that enhances the wearer's natural curves.

STYLING TIPS:

Pair with white palazzo pants or a matching coat. Add hot heels to complete the outfit.
Perfect for date nights and cocktail parties.



VIBRANT VIOLET VISION



DRS-32

DESCRIPTION:

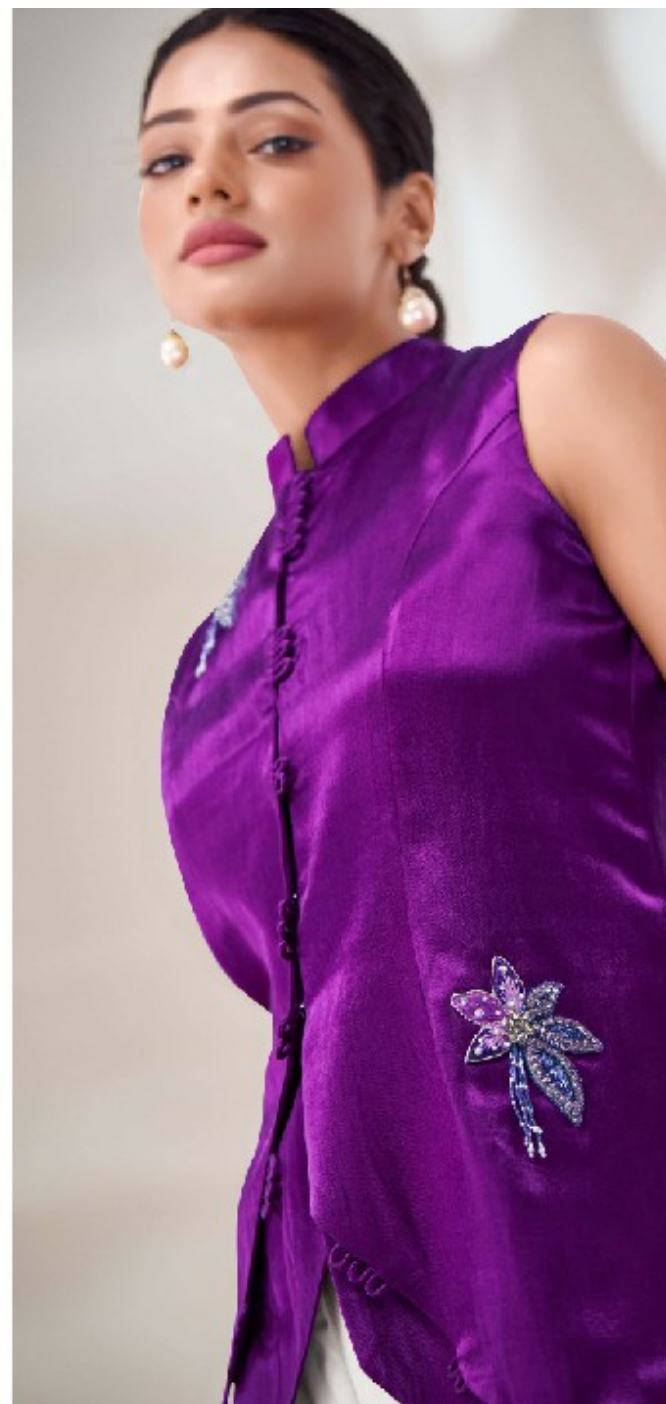
This vibrant purple jacket brings a splash of color to your ensemble. The high neck and embroidered details give it a regal look that's sure to turn heads. Intricate embroidery across the jacket, showcasing delicate floral patterns that add a touch of femininity and charm. The embroidery is meticulously hand-stitched, ensuring that each jacket is unique and of the highest quality. It took 10 hours to craft and is held inside the jacket.

STYLING TIPS:

Pair with white bottoms to keep the focus on the jacket.

Simple silver jewelry will enhance the overall appeal.

Best suited for weddings and festive celebrations.



DRS-32

DESCRIPTION :

This violet jacket brings a splash of color to your ensemble. The high neck and amandered details give it a regal look that's sure to turn heads. Intricate embroidery adorns the jacket, expressing delicate floral patterns that add a touch of femininity and charm. The embroidery is meticulously hand-stitched, ensuring that each piece is unique and of the highest quality. It took 10 hours to cut and stitch this delicate jacket.

STYLING TIPS :

Match with white bottoms to keep the focus on the jacket.

Simple silver jewelry will enhance the overall appeal.

Best suited for weddings and festive occasions.



VIBRANT VIOLET VISION





DESCRIPTION:

Embrace royal elegance with this blue Gajji Silk fabric jacket. The intricate embroidery and subtle front make it a standout piece for any wardrobe. Bodice is completely handmade and exchanged hand process 4 times.

STYLING TIPS:

Combine with white trousers to let the jacket shine.

Wear with subtle pearl accessories for a classic look.

Idea for ethnic events and formal dresses.

DRS-33



ROYAL BLUE BEAUTY





DESCRIPTION :

Embrace royal elegance with this sleek Coll. Silk fabric piece. The intricate embroidery and buttoned front make it a standout piece for any wardrobe. Details: completely hand embroidered and exchanged hand dress 4 times.

STYLING TIPS :

Combine with white trousers to attract jacket shine.

Wear with subtle pearl accessories for a classic touch.

Ideal for cultural events and formal dinners.

DRS-33



**ROYAL BLUE
BEAUTY**



RICH CHOCOLATE DELIGHT

DRS-34

DESCRIPTION :

Our chocolate brown jacket with its deep hue and structured fit is ideal for making a bold statement. The full sleeves and unique brooch detail add a touch of drama. Color is often in it, doors crafted by humans.

STYLING TIPS :

- Team with white wide-leg pants to balance the look.
- Opt for hoop earrings to complement the jacket's design.
- Perfect for business meetings and semi-formal gatherings.



DESCRIPTION :

Our chocolate brown jacket with its deep waist and structured fit is ideal for making a bold statement. The full sleeves and unique brooch detail add a touch of drama. Color is shown in our visuals created by humans.

STYLING TIPS :

Team with white wide-leg pants to balance the look.

Opt for hoop earrings to complement the jacket's design.

Perfect for business meetings and semi-formal gatherings.

DRS-34

**RICH
CHOCOLATE
DELIGHT**



GOLDEN GLAMOUR

DRS-35



DESCRIPTION :

Step into the spotlight with our golden Glam Silk tunic jacket. The sleeveless design and detailed edging exude sophistication, making it perfect for both day and night events. It took 3 hours to stitch this master piece.

STYLING TIPS :

Pair with all the trousseaus for a chic look.

Add minimal gold jewelry to enhance the elegance.

Suitable for evening parties and formal occasions.

GOLDEN GLAMOUR



DESCRIPTION :

Step into the spotlight with our golden Glam Silk Tulle Jacket. The sleeveless design and delicate edging exude sophistication, making it perfect for both day and night events. It took 8 hours to craft this master piece.

STYLING TIPS :

Pair with white trousers for a chic look.

Add minimalist gold jewelry to enhance the elegance.

Suitable for evening parties and festive occasions.

DRS-35



URBAN ENSEMBLE



SEASON 2024



OUR COLLECTION

Discover our exclusive collection of Gaji Silk fabric ethnic jackets, designed for the modern woman who appreciates timeless elegance and contemporary style. Each jacket is crafted with the utmost care, ensuring a perfect blend of luxury and comfort.



CONCLUSION

Elevate your style with our range of fine Gaji Silk fabric jackets. Each piece is designed to offer versatility, comfort, and unparalleled elegance. Whether you're attending a formal event or a festive celebration, these jackets will ensure you stand out in the crowd.