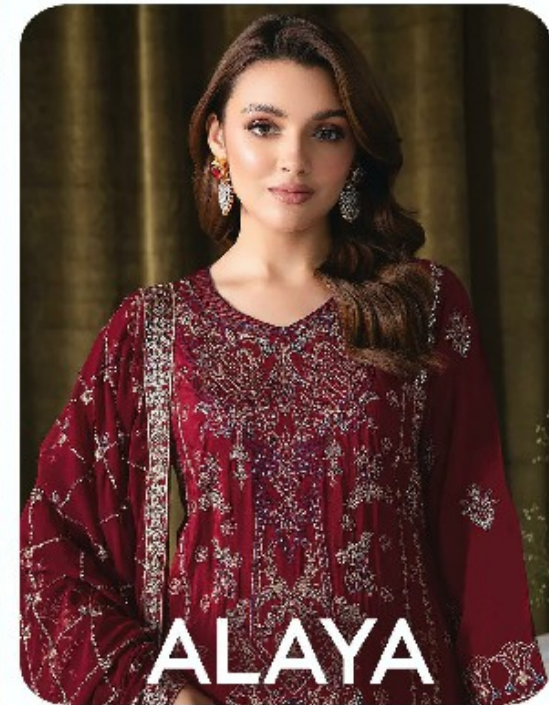


**S**  
**Sajida**  
Designs & Fabrics

**ALAYA**



D.No: 1008



**TOP**

Heavy Fox Georgette embroidery with Khatli work (cut 2.50)

**BOTTOM-INNER**

Dull Santoon (cut 4.25)

**DUPATTA**

Heavy Fox Georgette embroidery work (cut 2.30)

CARE INSTRUCTIONS

- ☉ Dry clean only
- ☹ Do not use any bleach or other cleaning chemical
- ☹ Do not iron at moderate temperature
- ☹ Do not dry fabric in direct sunlight



D.No: 1009



**TOP**

Heavy Fox Georgette embroidery  
with Khatli work (cut 2.50)

**BOTTOM-INNER**

Dull Santoon (cut 4.25)

**DUPATTA**

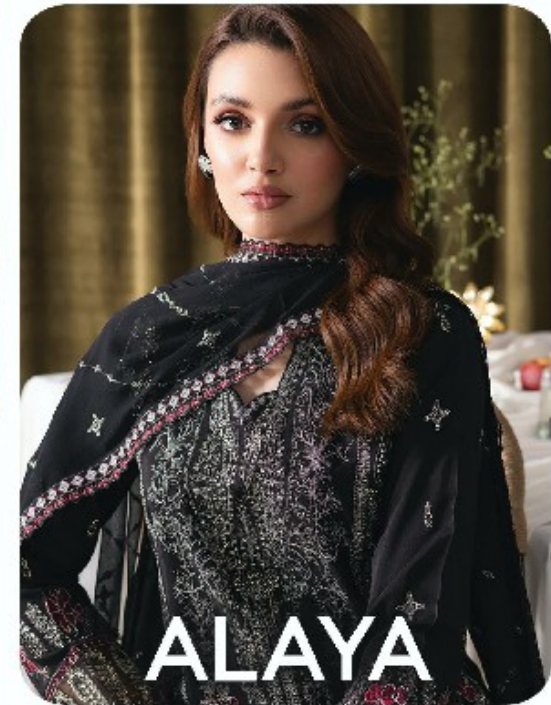
Heavy Fox Georgette  
embroidery work (cut 2.30)

CARE INSTRUCTIONS

- ☉ Dry clean only
- ☹ Do not use any bleach or other cleaning chemical
- ☹ For the fabric moderate temperature
- ☹ Do not dry fabric in direct sunlight



D.No: 1010



**TOP**

Heavy Fox Georgette embroidery  
with Khatli work (cut 2.50)

**BOTTOM-INNER**

Dull Santoon (cut 4.25)

**DUPATTA**

Heavy Fox Georgette  
embroidery work (cut 2.30)

CARE INSTRUCTIONS

- ☉ Dry clean only
- ☹ Do not use any bleach or other cleaning chemical
- ☹ For the fabric at moderate temperature
- ☹ Do not dry fabric in direct sunlight



# ALAYA

### CARE INSTRUCTIONS

- 1. Dry clean only
- 2. Do not use any chemical stain removers
- 3. Do not use high heat or direct sunlight
- 4. Avoid contact with sharp objects

### TOP

Heavy Fox Georgette embroidery with Khalli work (cut 2.50)

### BOTTOM-INNER

Dull Satoon (cut 4.25)

### DUPATTA

Heavy Fox Georgette embroidery work (cut 2.30)



**D.No: 1008**



**D.No: 1009**



**D.No: 1010**