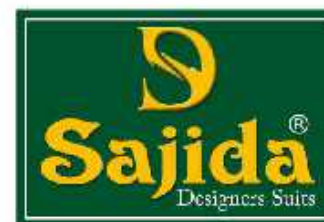
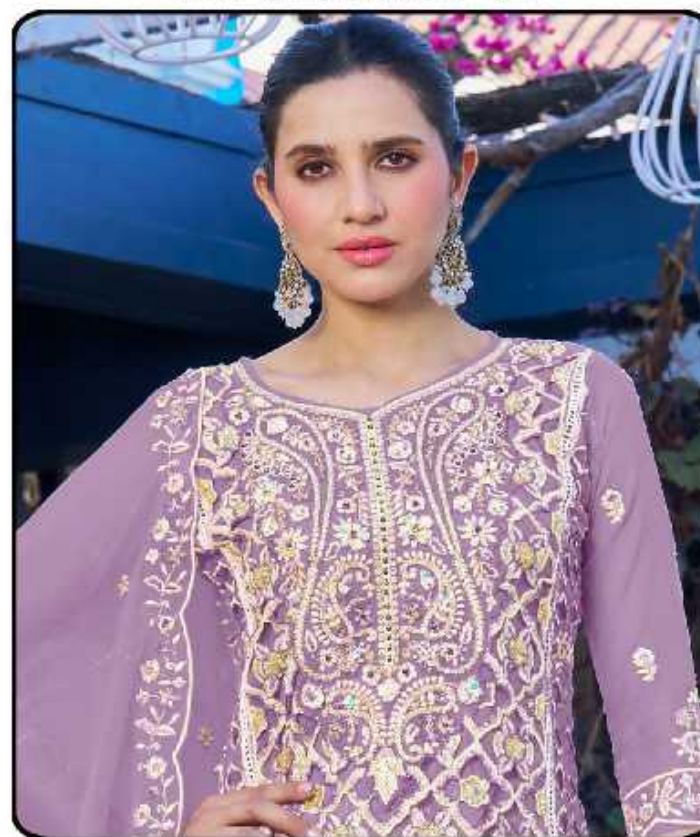


S
Sajida
Designers Suits

INAYA
VOL-1



INAYA-1



TOP

Heavy Orgenza Embroidery
with Khatt work (cut 2.50)

BOTTOM-INNER

Dull Santoon (cut 4.25)

DUPATTA

Heavy Orgenza Embroidery
work (cut 2.30)

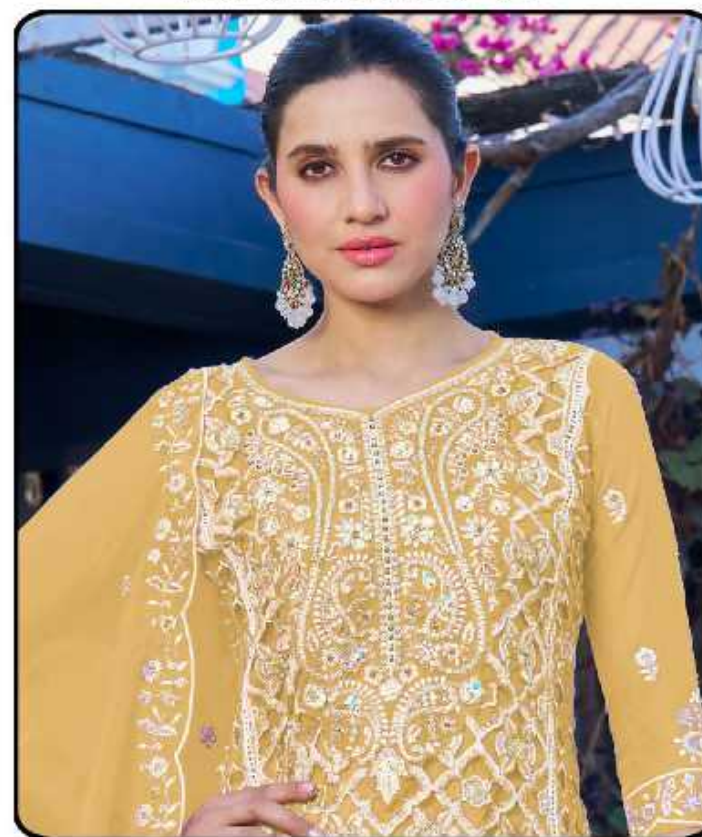
D.No: 1041-A

CARE INSTRUCTIONS

- ☑ Dry clean only
- ⚠ Do not use any bleach or stain removing chemical
- ☑ Iron the fabric at moderate temperature
- ☒ Do not dry fabric in direct sunlight



INAYA-1



TOP

Heavy Orgenza Embroidery with Khatt work (cut 2.50)

BOTTOM-INNER

Dull Santoon (cut 4.25)

DUPATTA

Heavy Orgenza Embroidery work (cut 2.30)

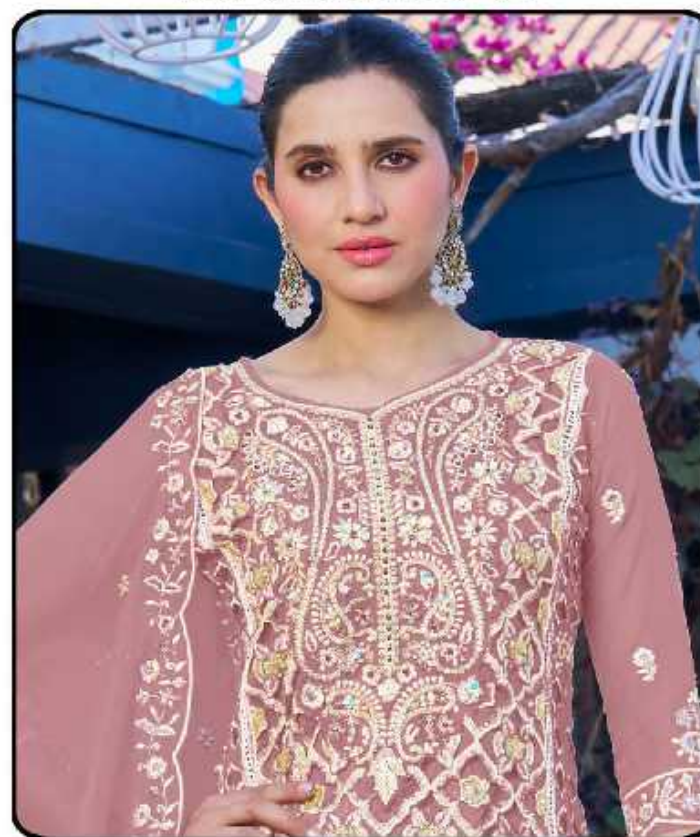
D.No: 1041-D

CARE INSTRUCTIONS

- ☉ Dry clean only
- ⚠ Do not use any bleach or stain removing chemical
- ☰ Iron the fabric at moderate temperature
- ☒ Do not dry fabric in direct sunlight



INAYA-1



TOP

Heavy Orgenza Embroidery
with Khatt work (cut 2.50)

BOTTOM-INNER

Dull Santoon (cut 4.25)

DUPATTA

Heavy Orgenza Embroidery
work (cut 2.30)

D.No: 1041-C

CARE INSTRUCTIONS

- ☑ Dry clean only
- ✘ Do not use any bleach or stain removing chemical
- ☑ Iron the fabric at moderate temperature
- ☑ Do not dry fabric in direct sunlight



INAYA-1



TOP

Heavy Orgenza Embroidery
with Khatt work (cut 2.50)

BOTTOM-INNER

Dull Santoon (cut 4.25)

DUPATTA

Heavy Orgenza Embroidery
work (cut 2.30)

D.No: 1041-B

CARE INSTRUCTIONS

- ☉ Dry clean only
- ⚠ Do not use any bleach or stain removing chemical
- ☰ Iron the fabric at moderate temperature
- ☒ Do not dry fabric in direct sunlight



INAYA

VOL-1

CARE INSTRUCTIONS

- ☑️ Dry clean only
- ☒ Do not use any bleach or stain removing chemicals
- ☒ Iron the fabric at moderate temperature
- ☒ Do not dry fabric in direct sunlight

TOP

Heavy Orgenza Embroidery with Khatli work (cut 2.50)

BOTTOM-INNER

Dull Santoon (cut 4.25)

DUPATTA

Heavy Orgenza Embroidery work (cut 2.30)



D.No: 1041-A



D.No: 1041-B



D.No: 1041-C



D.No: 1041-D