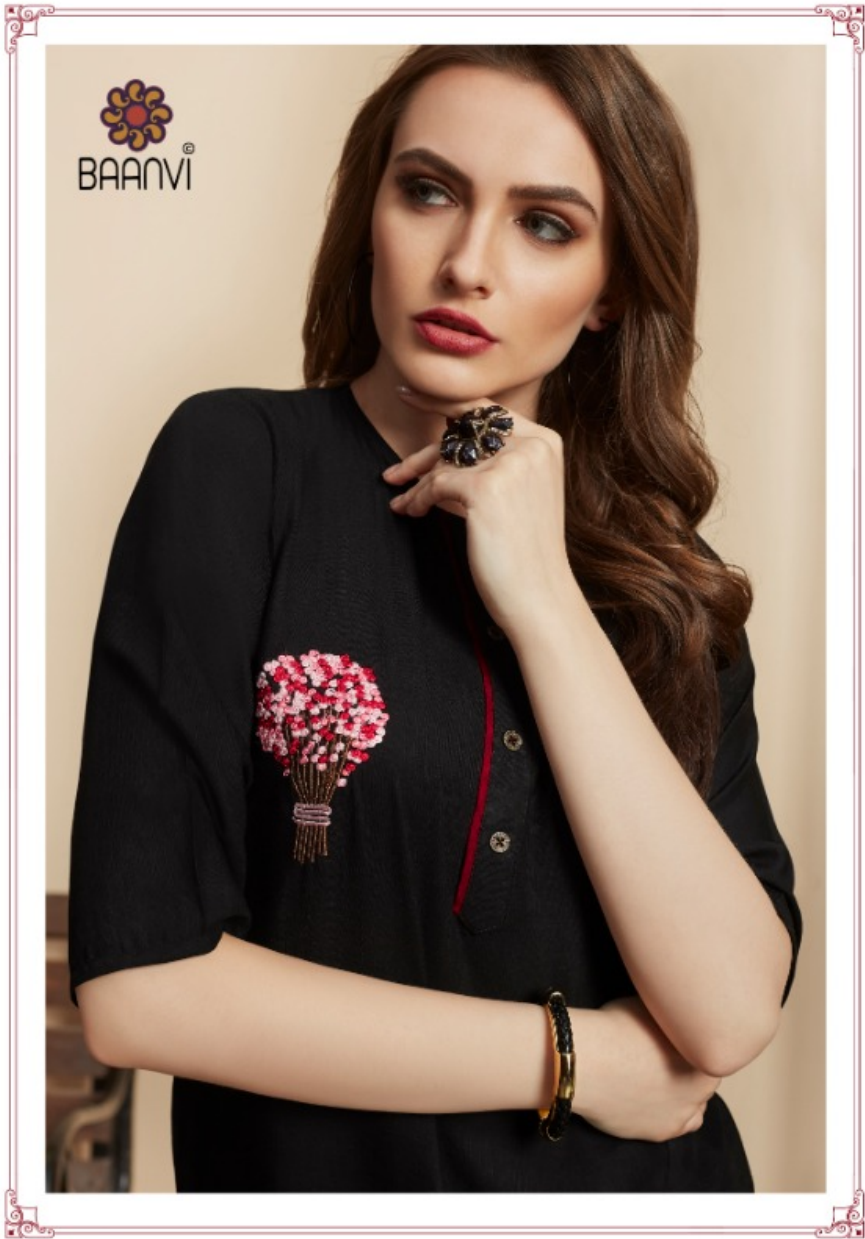


A woman with long brown hair is wearing a light pink, long-sleeved kurta with a dark pink vertical stripe down the center and a floral brooch on the left chest. She is also wearing large hoop earrings, a ring, and a bracelet. The background is a plain wall with a lamp fixture visible on the right.


BAANVI[®]

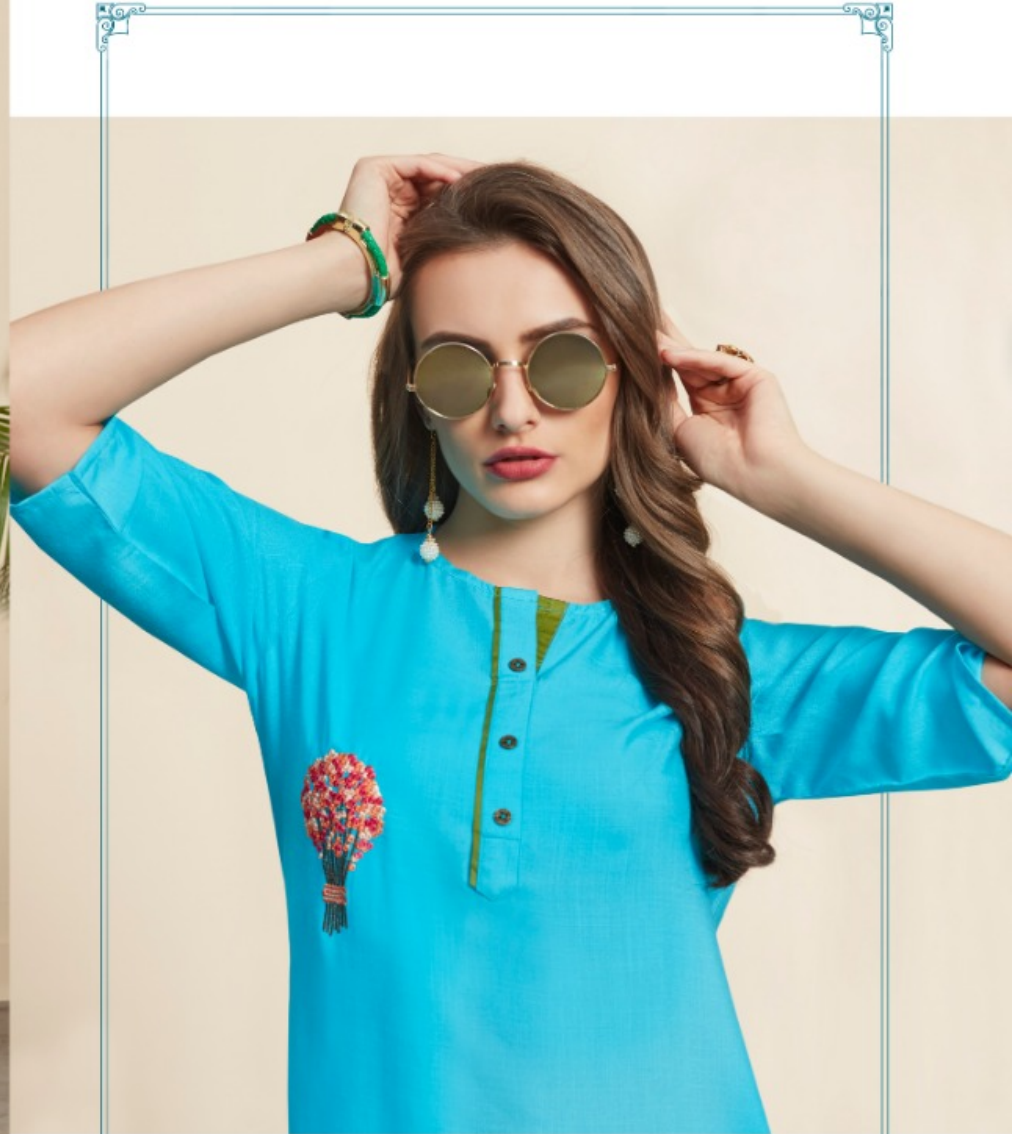
SAMEERA
VOL-03






BAANVI
SAMEERA
VOL-03


BAANVI®



3004



3002



3003

