



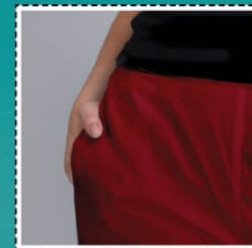
Burgundy

ETHNIC COTTON PANT

Fabric: 100% Luxury Cotton
with Silk Look

Size: 32 (L) • 34 (XL) • 36 (XXL)
38 (3XL) • 40-42 (4XL)

Length: 36+



Both Side Pocket

Pintex Work
with Gota

LATEST FASHION • HI-QUALITY • LOWEST PRICE



F

Turquoise Green
ETHNIC COTTON PANT

Fabric: 100% Luxury Cotton with Silk Look
Size: 32 (L) • 34 (XL) • 36 (XXL) • 38 (3XL) • 40-42 (4XL)
Length: 36+

Pintex Work with Gota
Both Side Pocket

LATEST FASHION • HI-QUALITY • LOWEST PRICE



F

Plum Wine
ETHNIC COTTON PANT

Fabric: 100% Luxury Cotton with Silk Look
Size: 32 (L) • 34 (XL) • 36 (XXL) • 38 (3XL) • 40-42 (4XL)
Length: 36+

Pintex Work with Gota
Both Side Pocket

LATEST FASHION • HI-QUALITY • LOWEST PRICE



F

Golden
ETHNIC COTTON PANT

Fabric: 100% Luxury Cotton with Silk Look
Size: 32 (L) • 34 (XL) • 36 (XXL) • 38 (3XL) • 40-42 (4XL)
Length: 36+

Pintex Work with Gota
Both Side Pocket

LATEST FASHION • HI-QUALITY • LOWEST PRICE



F

White
ETHNIC COTTON PANT

Fabric: 100% Luxury Cotton with Silk Look
Size: 32 (L) • 34 (XL) • 36 (XXL) • 38 (3XL) • 40-42 (4XL)
Length: 36+

Pintex Work with Gota
Both Side Pocket

LATEST FASHION • HI-QUALITY • LOWEST PRICE



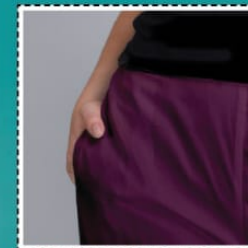
Plum Wine

ETHNIC COTTON PANT

Fabric: 100% Luxury Cotton
with Silk Look

Size: 32 (L) • 34 (XL) • 36 (XXL)
38 (3XL) • 40-42 (4XL)

Length: 36+



Both Side Pocket

Pintex Work
with Gota

LATEST FASHION • HI-QUALITY • LOWEST PRICE

F

White
ETHNIC COTTON PANT

Fabric: 100% Luxury Cotton with Silk Look
Size: 32 (L) • 34 (XL) • 36 (XXL)
38 (3XL) • 40-42 (4XL)
Length: 36+

Pintex Work with Gota
Both Side Pocket

LATEST FASHION • HI-QUALITY • LOWEST PRICE

F

Crimson
ETHNIC COTTON PANT

Fabric: 100% Luxury Cotton with Silk Look
Size: 32 (L) • 34 (XL) • 36 (XXL)
38 (3XL) • 40-42 (4XL)
Length: 36+

Pintex Work with Gota
Both Side Pocket

LATEST FASHION • HI-QUALITY • LOWEST PRICE

F

Golden
ETHNIC COTTON PANT

Fabric: 100% Luxury Cotton with Silk Look
Size: 32 (L) • 34 (XL) • 36 (XXL)
38 (3XL) • 40-42 (4XL)
Length: 36+

Pintex Work with Gota
Both Side Pocket

LATEST FASHION • HI-QUALITY • LOWEST PRICE

F

Black
ETHNIC COTTON PANT

Fabric: 100% Luxury Cotton with Silk Look
Size: 32 (L) • 34 (XL) • 36 (XXL)
38 (3XL) • 40-42 (4XL)
Length: 36+

Pintex Work with Gota
Both Side Pocket

LATEST FASHION • HI-QUALITY • LOWEST PRICE



F

Scarlet Red

ETHNIC COTTON PANT

Fabric: 100% Luxury Cotton with Silk Look

Size: 32 (L) • 34 (XL) • 36 (XXL)
38 (3XL) • 40-42 (4XL)

Length: 36+

Pintex Work with Gota

Both Side Pocket

LATEST FASHION • HI-QUALITY • LOWEST PRICE



F

Burgundy

ETHNIC COTTON PANT

Fabric: 100% Luxury Cotton with Silk Look

Size: 32 (L) • 34 (XL) • 36 (XXL)
38 (3XL) • 40-42 (4XL)

Length: 36+

Pintex Work with Gota

Both Side Pocket

LATEST FASHION • HI-QUALITY • LOWEST PRICE



F

Cedar Brown

ETHNIC COTTON PANT

Fabric: 100% Luxury Cotton with Silk Look

Size: 32 (L) • 34 (XL) • 36 (XXL)
38 (3XL) • 40-42 (4XL)

Length: 36+

Pintex Work with Gota

Both Side Pocket

LATEST FASHION • HI-QUALITY • LOWEST PRICE



F

Midnight Blue

ETHNIC COTTON PANT

Fabric: 100% Luxury Cotton with Silk Look

Size: 32 (L) • 34 (XL) • 36 (XXL)
38 (3XL) • 40-42 (4XL)

Length: 36+

Pintex Work with Gota

Both Side Pocket

LATEST FASHION • HI-QUALITY • LOWEST PRICE