

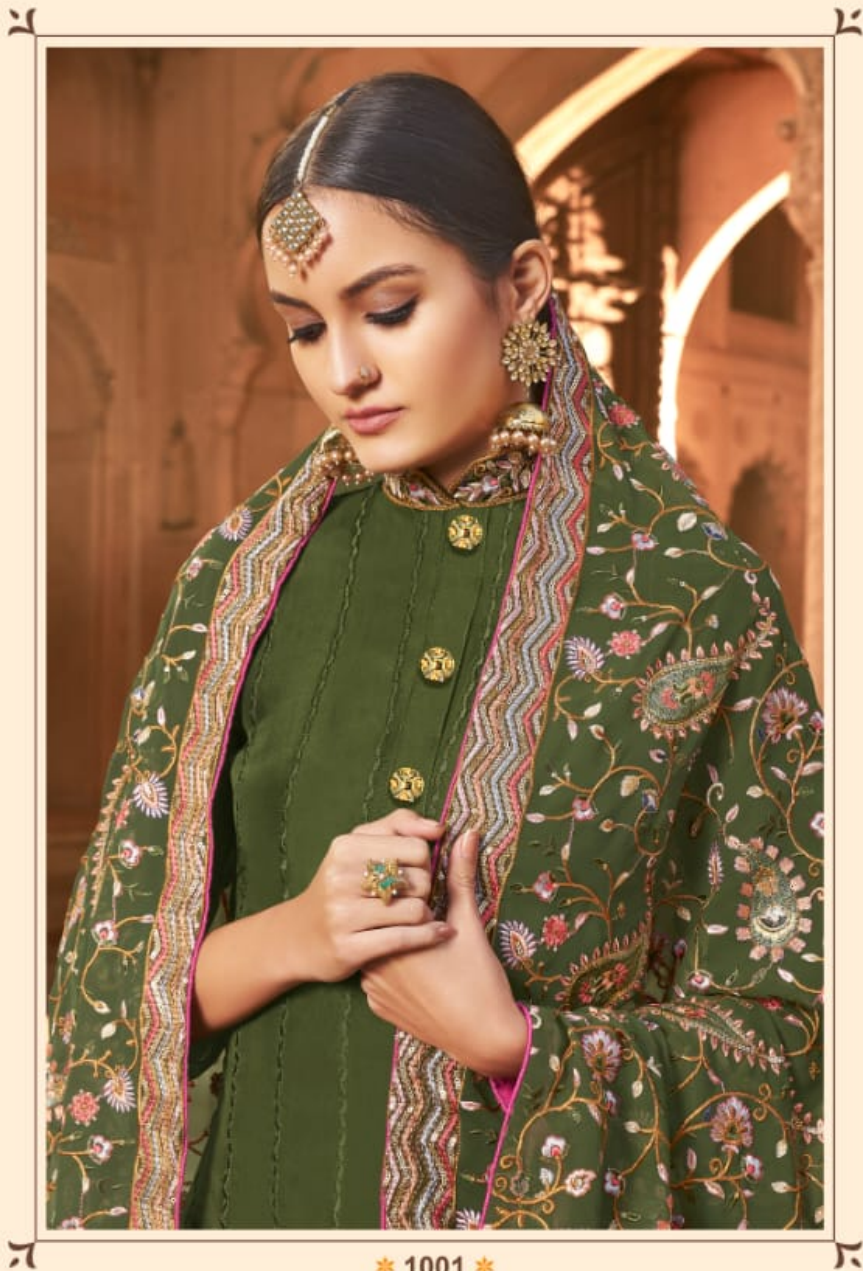
AMYRA
Designer



JHAROKHA



AMYRA
Designer



* 1001 *



A woman is the central figure, standing in a grand, ornate archway. She is wearing a vibrant green ensemble consisting of a long-sleeved kurta and a matching dupatta. The dupatta is heavily embroidered with colorful floral patterns in shades of pink, red, and yellow. She is adorned with traditional Indian jewelry, including a large, ornate necklace, a matching earring, and a bindi on her forehead. Her hands are clasped in front of her. The background is a rich, warm-toned stone structure with intricate carvings and multiple layers of arches, creating a sense of depth and grandeur. The lighting is soft and focused on the woman, highlighting the details of her attire and the architectural elements.

AMYRA
Designer
GORGEOUSLY
YOU * ARE * WHAT * YOU * WEAR

* 1003 *



AMYRA
Designer
GORGEOUSLY
YOU * ARE * WHAT * YOU * WEAR



★ 1003 ★





* 1001 *



* 1002 *



* 1003 *



* 1004 *

AMYRA
Designer

FABULOUS
BE * FITTED * WITH * YOUR * CHOICE

* 1004 *



AMYRA
Designer



* 1002 *

A woman is shown in profile, looking down. She is wearing a pink outfit with intricate gold and floral embroidery. Her jewelry includes a gold headband with pearls, large gold earrings with a pearl drop, a nose ring, and a ring. The background is a warm, textured brown.

AMYRA
Designer
SIMPLICITY
LET * YOUR * WEARS * SPEAK

* 1002 *