





B FINE
Old Time Charm!

DELIGHT OF
ELEGANCE



RIESTES
INSIDE YOU



BF -337



QUEEN
B FINE.
Et Fine Class!







LADY
B'FINE
LOOKS LIKE A BEAUTY

HAVE A BRIGHT MOOD BY EMBRACING THE LATEST FASHION WHICH IS TO BEHOLD
THE WORLD AND MAKE YOU LOOK GREAT IN THE CROWD.

B'FINE
Shi Poo Shana!

EXPLORE THE WORLD OF FASHION WITH THE STATEMENT FACTOR AND ELEGANCE WHY IS A CLASSIC LOOK WITH THIS ATTIRE.





B FINE.
All Star Stories
TRADITION STAYS IS BASED ON ITS RICH
CULTURE AND CUSTOMS. AND ADOPTING
VILLAGE CULTURE MEANS INVITING MANY
MORE COLOURS, CREATIVITY AND RICHNESS
IN YOUR LIFE.



BF - 333





BF - 336



B FINE

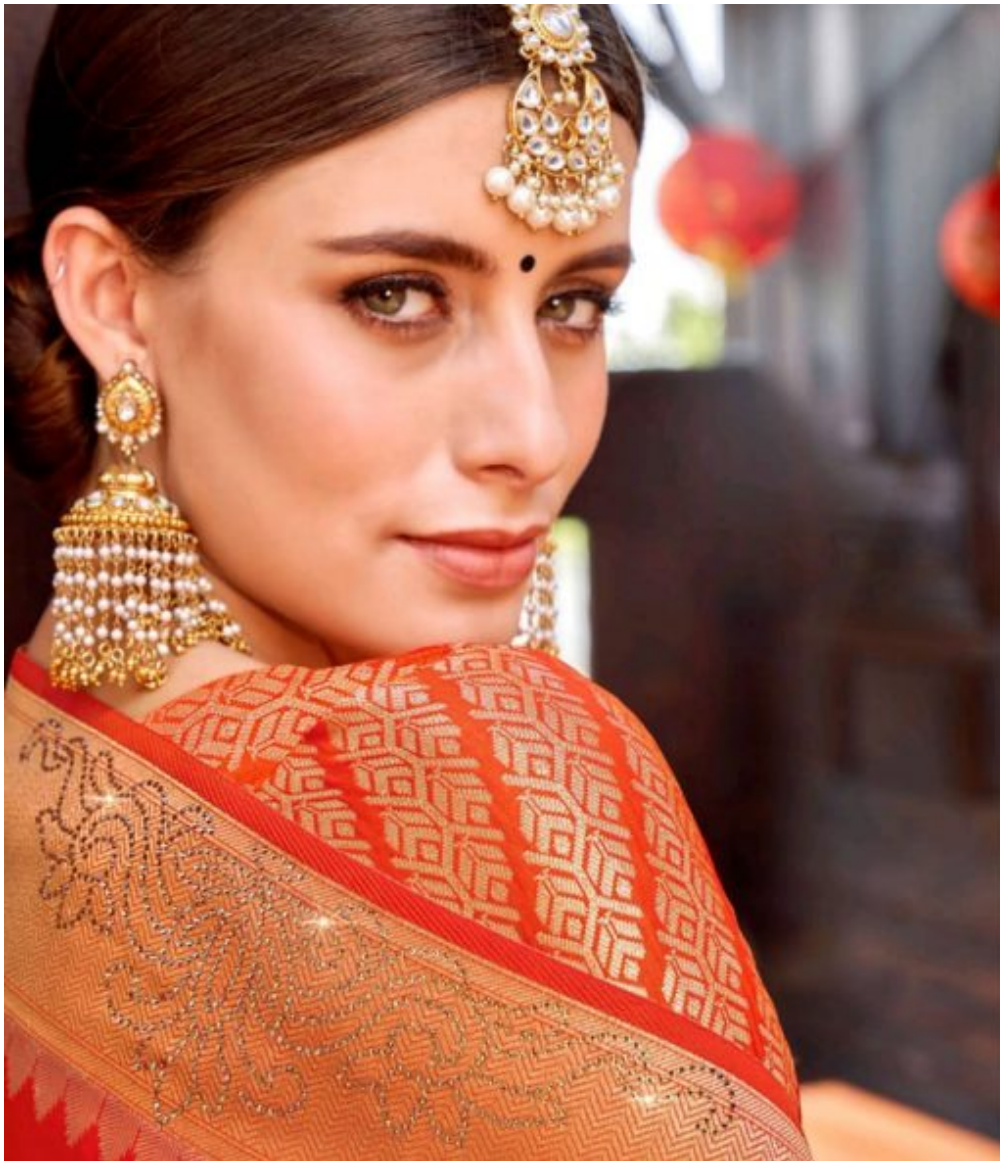
Ed The Classic!

EXPLORE THE WORLD OF B FINE WITH THE STATEMENT FACETS AND ELEGANCE WITH IN A CLASSIC LOOK WITH THIS ARTIST.









FINE
At Your Choice

BE
PRETT-Y

GLOW UP YOUR CHARM AND TAKE IT TO THE DIFFERENT LEVEL. MAKE A PERSONALITY WHERE NONE CAN TAKE THEIR EYES OFF YOU AND STAND LIKE A REALITY THAT EVERYONE ADMORES YOU.





BF-329



BF-330



BF-331



BF-335



BF-336



BF-337



BF-332



BF-333



BF-334



BF-338



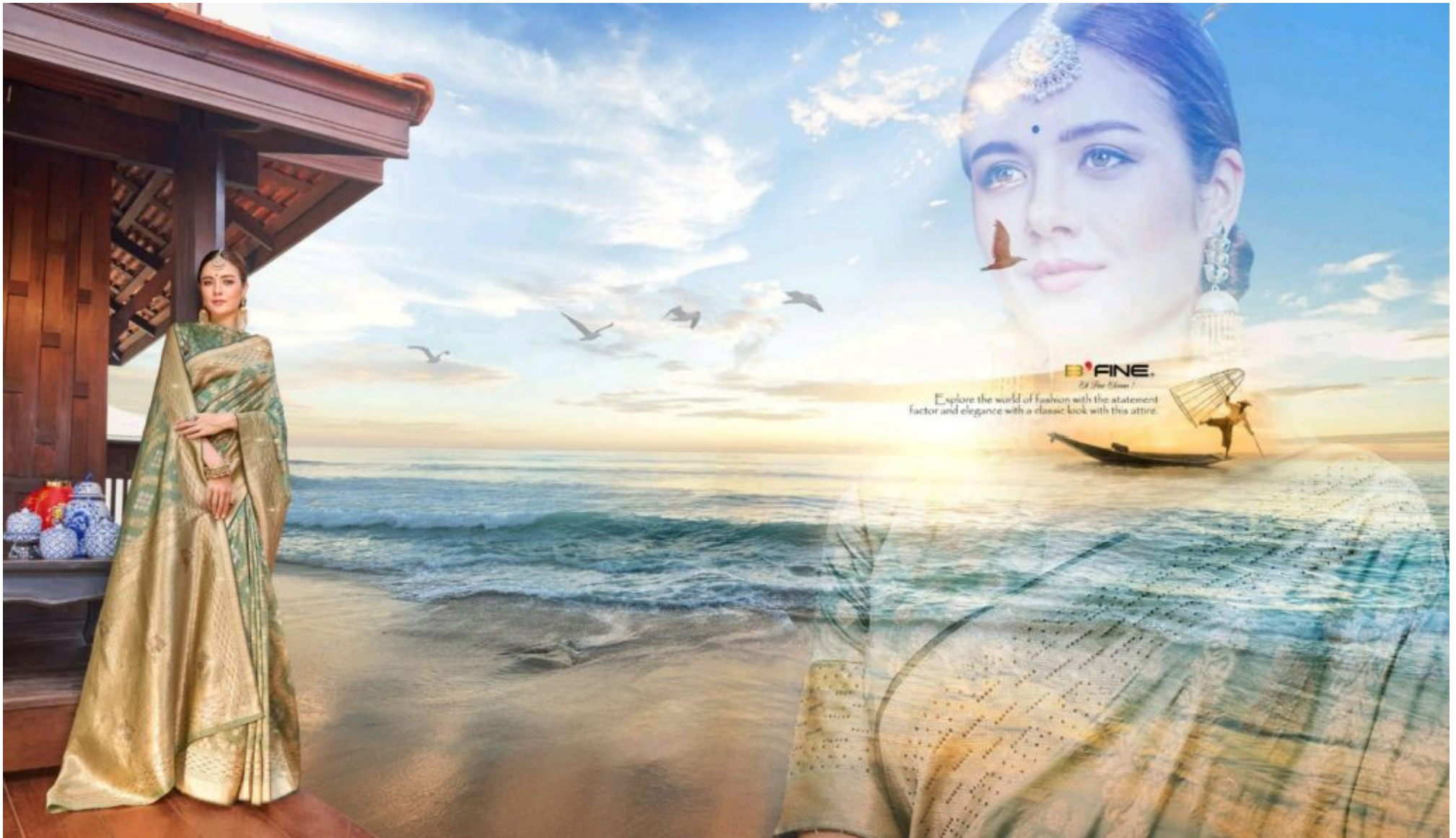
BF-339



BF-340

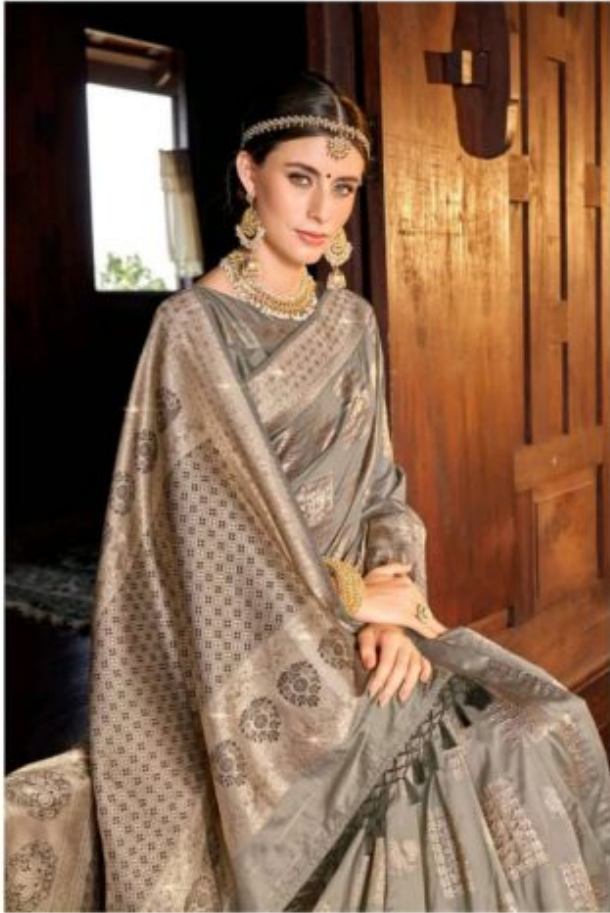






B.FINE
By The Ocean

Explore the world of fashion with the statement factor and elegance with a classic look with this attire.



BANE.
By The Name



BF-332

A fashion advertisement for B'FINE. The central focus is a detailed black and white sketch of a woman wearing a crown and a heavily embellished, traditional Indian outfit. Surrounding this sketch are several inset photographs: a close-up of a woman's face and jewelry, a woman in a red and gold sari, a woman in a grey and gold sari, and a close-up of a woman's hands and jewelry. The B'FINE logo is positioned in the upper right, with the tagline "Et Fine Est..." below it. The Hindi text "स्वारीवस्की" is written in a stylized red font at the bottom right.

B'FINE
Et Fine Est...

स्वारीवस्की

