



**BACK BUTTON TOP**

Fabric:  
Premium Quality  
Soft Georgette

Size: 38 (M)  
40 (L) • 42 (XL)

Length: 24"

Antique Look  
Metal Brooch

Ice Blue



Back with  
Button

**LATEST FASHION • HI-QUALITY • LOWEST PRICE**

**TEXTILE DEAL**

Please Note: Brooch may change in next production.



V-Cut  
Mandarin Collar

Antique Look  
Metal Brooch

Shirt Style Back  
with Buttons

¾ Length Sleeves  
with Button

Bottom & Side  
Darts

Ice Blue

Blossom  
Pink

LATEST FASHION • HI-QUALITY • LOWEST PRICE

TEXTILE DEAL

Please Note: Brooch may change in next production.



**BACK BUTTON TOP**

Fabric:  
Premium Quality  
Soft Georgette  
Size: 38 (M) • 40 (L)  
Length: 24"

Black  
Butterfly



Antique Look  
Metal Brooch



TEXTILE DEAL

**LATEST FASHION • HI-QUALITY • LOWEST PRICE**

Please Note: Brooch may change in next production.





## BACK BUTTON TOP

Fabric:  
Premium Quality  
Soft Georgette

Size: 40 (L)

Length: 24"

Wildberry  
Beige Flower



Antique Look  
Metal Brooch

**LATEST FASHION • HI-QUALITY • LOWEST PRICE**

**TEXTILE DEAL**

Please Note: Brooch may change in next production.



Black Blossom Flower  
(M & L only)



Moss Green



Peach



Rosewood Pink



Flamingo Pink



Blossom Pink



**BACK BUTTON TOP**

Fabric: Premium Quality  
Soft Georgette  
Size: 38 (M) • 40 (L) • 42 (XL)  
Length: 24"

Please Note:  
Brooch  
may change  
in next  
production.

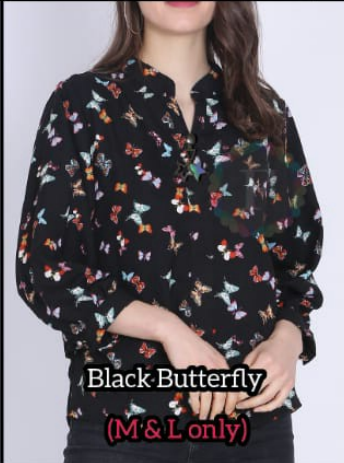


Wildberry Beige Flower  
(L only)



Wildberry

TEXTILE DEAL



Black Butterfly  
(M & L only)



Ice Blue



Mocha Brown





## BACK BUTTON TOP

Fabric:  
Premium Quality  
Soft Georgette

Size: 38 (M)  
40 (L) • 42 (XL)

Length: 24"

Antique Look  
Metal Brooch

Back with  
Button

Blossom  
Pink



LATEST FASHION • HI-QUALITY • LOWEST PRICE

TEXTILE DEAL

Please Note: Brooch may change in next production.



## BACK BUTTON TOP

Fabric:  
Premium Quality  
Soft Georgette

Size:  
38 (M) • 40 (L)  
Length: 24"

Black  
Blossom  
Flower



Antique Look  
Metal Brooch

LATEST FASHION • HI-QUALITY • LOWEST PRICE

TEXTILE DEAL

Please Note: Brooch may change in next production.