

RINAZ[®]
FASHION

IMROZIA

vol-2





2114
ALIZA
VOL-2



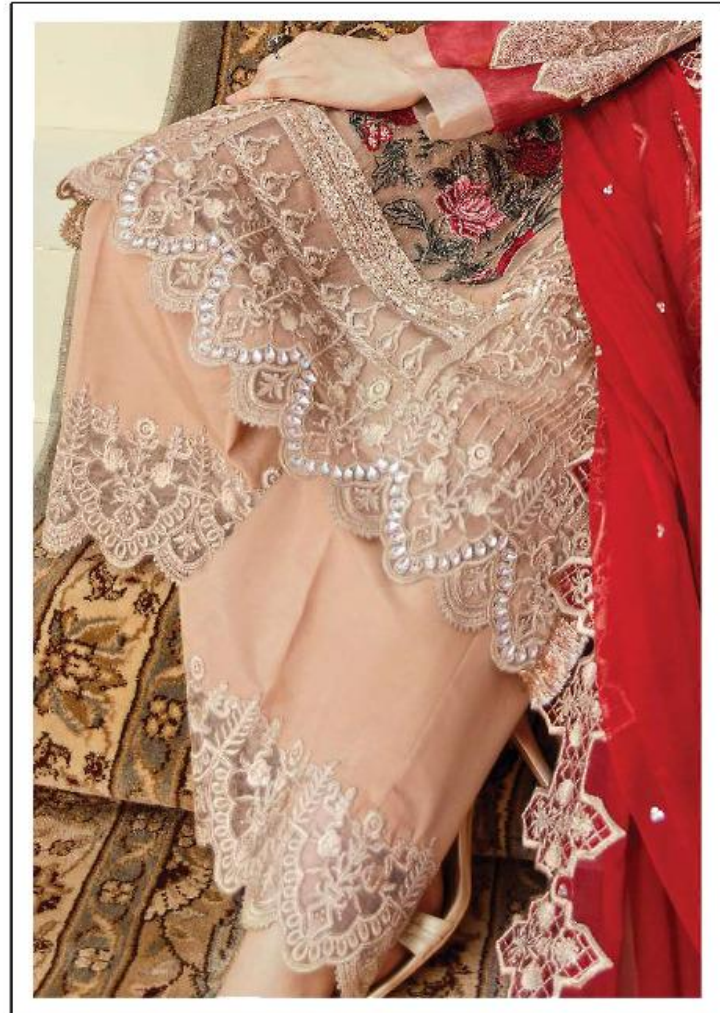


LA ROZA BY IMROZIA PREMIUM IS BRINGING THE EXQUISITE CRAFTSMANSHIP OF THE LATEST LUXURY COLLECTION BY THE NAME OF 'GRANDIOSE'. METICULOUSLY EMBELLISHED LUXE FORMALS, RENDERED IN DREAMY HUES OF SIGNATURE PREMIUM FABRIC. SPARKLING SEQUINS RADIATE THE DESIGN IN INTRINSIC PATTERNS GIVING A GLAMOROUS APPEARANCE TO THE ENTIRE LOOK. OUR AWE-INSPIRING DESIGNS EXUDE FEMININITY AND ETHEREAL GRACE THAT IS SURE TO MAKE HEADS TURN! REJUVENATE YOUR SUMMER WARDROBE WITH OUR MAGNIFICENT ENSEMBLES.





RINAZ[®]
FASHION





D.No.3301



D.No.3302



D.No.3305



D.No.3306



D.No.3303



D.No.3304

IMROZIA

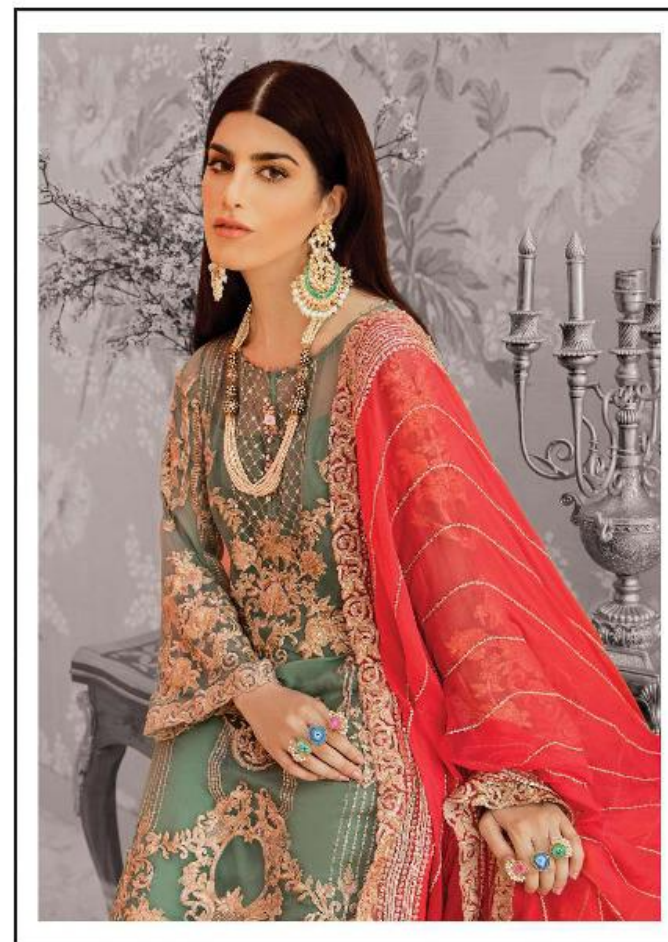
by

RINAZ[®]
FASHION



RINAZ[®]
FASHION

D.No.3302



SKY
MYSTIQUE

ACCENTUATE YOUR FESTIVITIES WITH EASTERN TAPESTRIES OF FINE
THREAD WORK AND OCEAN SHADE OF SKY. THIS ELEGANT ENSEMBLE
WILL ADORE YOU WITH ITS INFINITE PROPERTIES.



RINAZ[®]
FASHION
D.No.3306

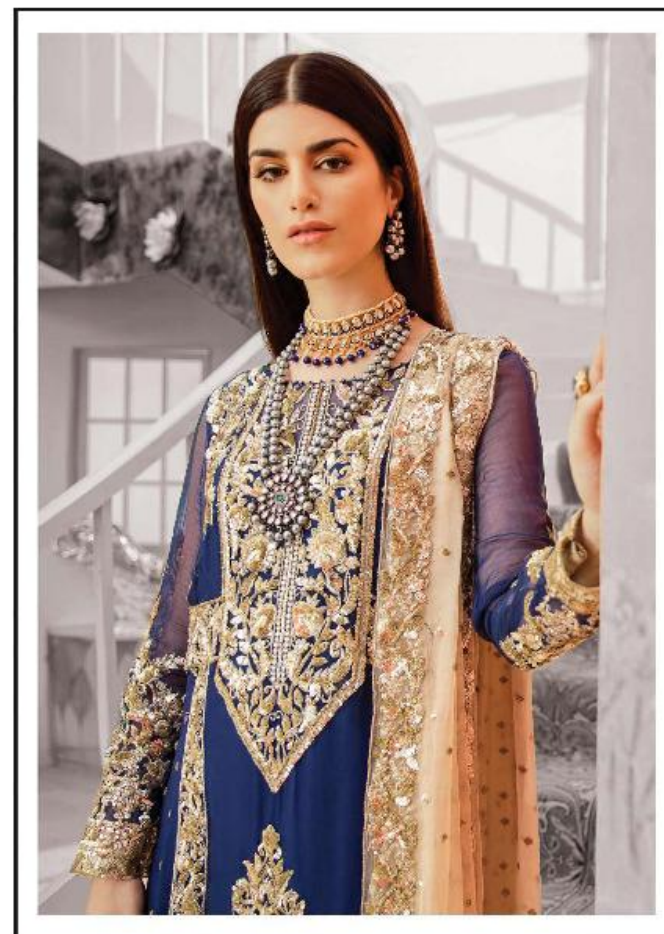


SALMON
BLUSH

ILLUMINATING WITH HYPNOTIZING WELL-CRAFTED ENHANCEMENTS AND SUBLIME COLORS, THIS STUNNING DESIGN IS THE PERFECT LOOK FOR A DAYTIME FORMAL OCCASION.



RINAZ[®]
FASHION
D.No.3303



DREAMY
SAPPHIRE

REINVENTING YOUR FASHION STATEMENT WITH ETHNICITY. THIS DREAMY DESIGN IS ILLUMINATED WITH TRADITIONAL SILHOUETTES AND LUMINOUS TINTS ON A LUXE DEEP SAPPHIRE HUE.



RINAZ[®]
FASHION

D.No.3305



MIDNIGHT GLARE

A MAGNIFICENT ATTIRE THAT IS INSPIRED BY WHIMSICAL ORNAMENTATIONS, COMPLEMENTED WITH BOLD HUES OF BLACK AND MAROON. THIS SOPHISTICATED DESIGN IS SURE TO GIVE YOU A HEAVENLY LOOK.



RINAZ[®]
FASHION
D.No.3301

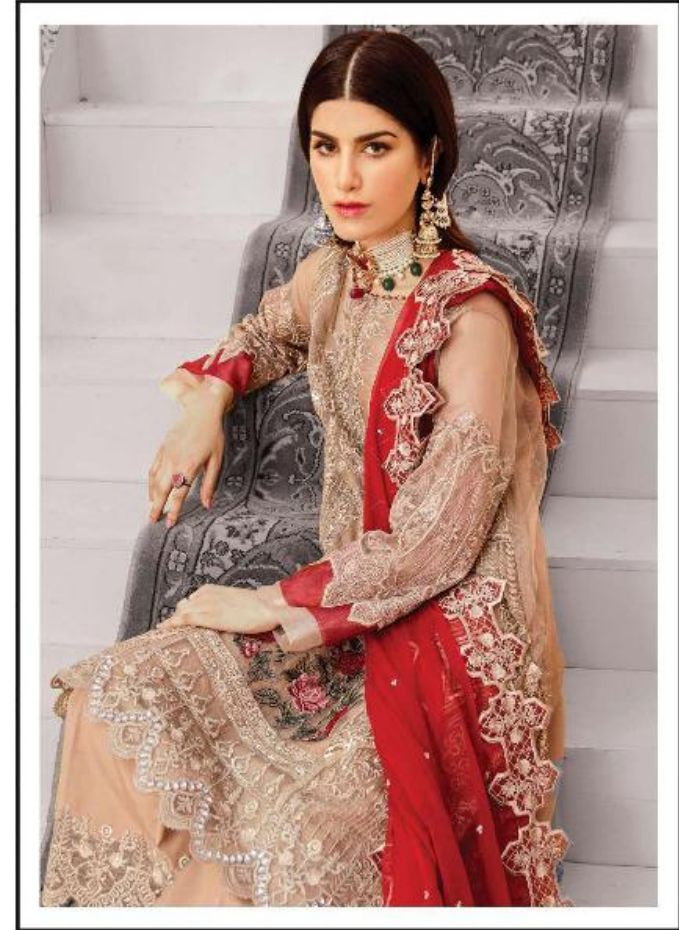


DAISY LAVENDER

THIS ETHereal BEAUTY IS CRAFTED WITH METICULOUS
THREAdWORK AND INTRICATE PATTERNS THAT CREATES
AN ADORNMENT REMINISCENT LOOK OF FESTIVITIES.



RINAZ[®]
FASHION
D.No.3304



GOLDEN
BEIGE

THIS LUXURIOUSLY ENCRUSTED MASTERPIECE IS CRAFTED WITH EXQUISITE FLORAL EMBROIDERY AND INTRICATE DETAILING THAT WILL LEAVE YOU IN COMPLETE AWE.