

A woman is the central figure, wearing a vibrant red saree with intricate gold embroidery. The saree features a wide gold border and scattered floral motifs. She is also wearing a matching red blouse with gold detailing. Her hair is pulled back, and she has a soft, elegant expression. The background is a deep blue with a repeating geometric pattern. The lighting is dramatic, highlighting the texture of the fabric and the woman's features.

VARSHA

Melange





TEXTILE DEAL







TEXTILE DEAL







TEXTILE DEAL







TEXTILE DEAL



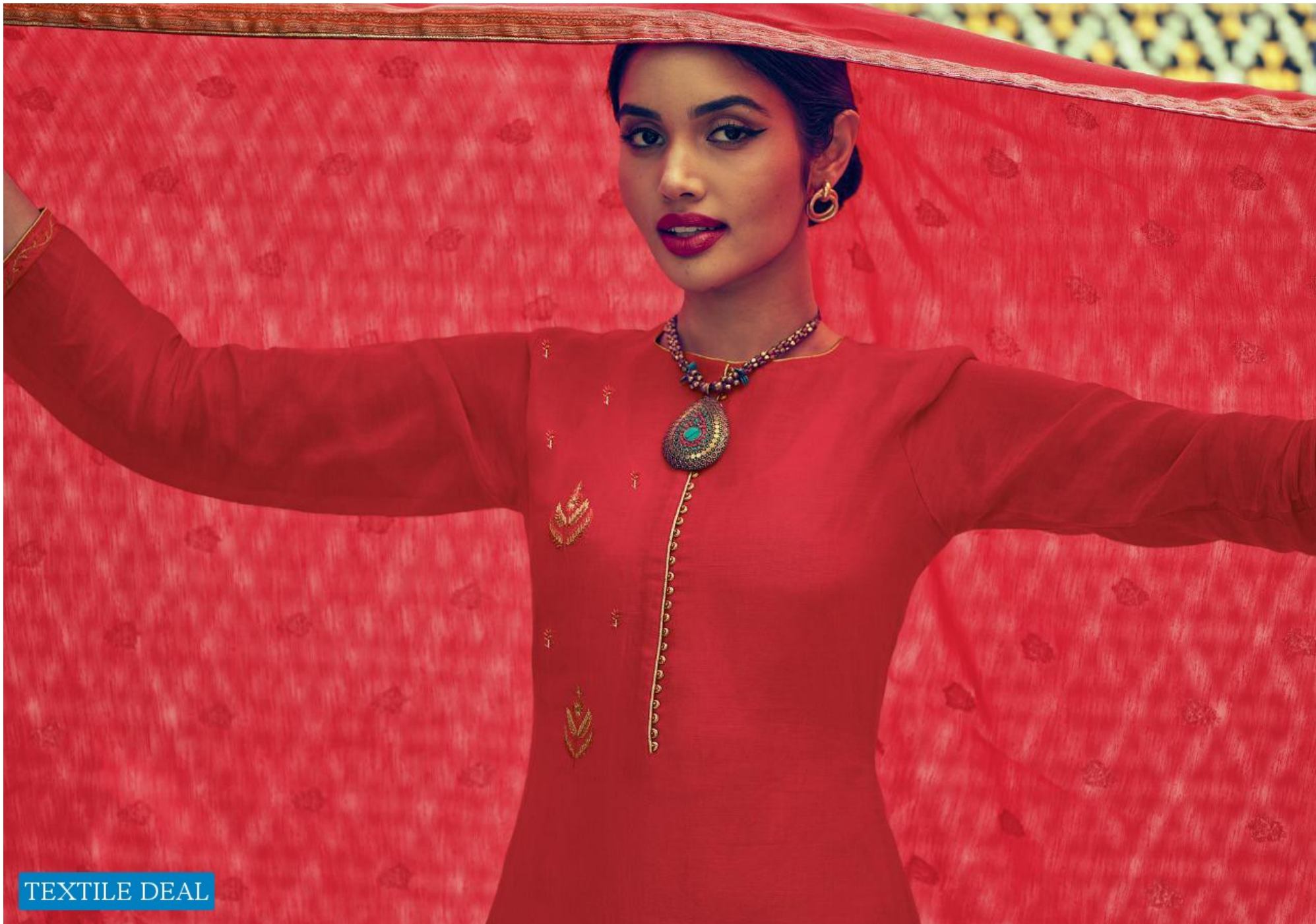




TEXTILE DEAL







TEXTILE DEAL





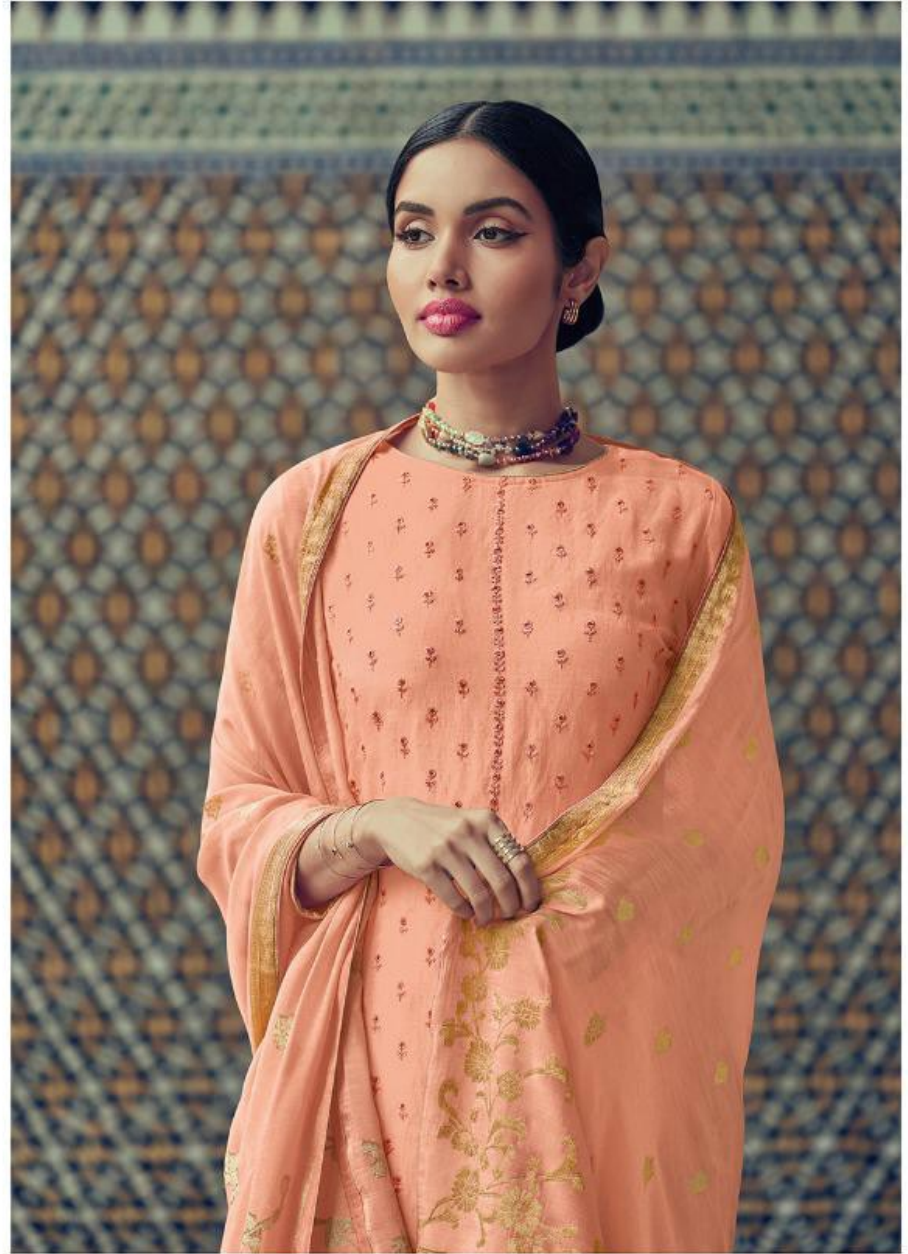
TEXTILE DEAL







TEXTILE DEAL



ML-24





MI-22  
TEXTILE DEAL





TEXTILE DEAL



ML-23





ML-21



ML-22



ML-25



ML-26



TEXTILE DEAL



ML-24



ML-27

**VARSHA**  
Melange