





A woman is lying on a floor, wearing a traditional Indian sari with a vibrant orange and red color palette and intricate floral patterns. She is looking towards the camera with a serene expression. The background is a simple, warm-toned interior with a wooden pillar on the left.

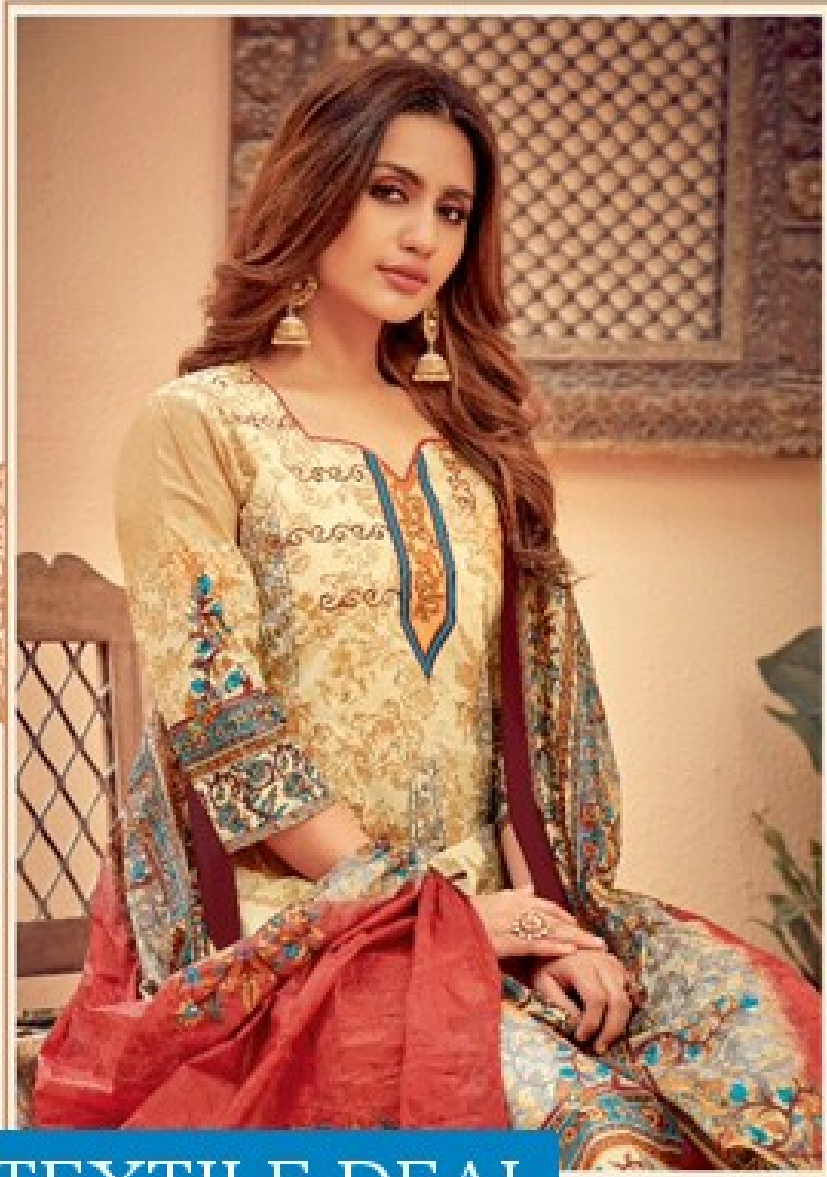
**kala**  
feminine forever & ever...  
*Meher*

# Celebrating Heritage

A celebratory style with conventional appeal

*To be beautiful means to be yourself. You don't need to be accepted by others, you need to accept yourself.*

TEXTILE DEAL



TEXTILE DEAL



kala  
Sustainable Fashion & Textiles

Mohar



## Regal Revelry

A celebration of all things royal.

*True beauty is being confident & proud of yourself. No matter how many people may disagree, beauty fades after time, but personality is forever.*



TEXTILE DEAL









D.NO.3004







D.NO.3006



TEXTILE DEAL



**kala**  
feminine forever & ever..

*Meher*



**kala**  
feminine forever & ever...

Meher



TEXTILE DEAL

## Finespun Motifs

A Beautiful amalgamation of florals and geometry

*Beauty is not just about physical appearance, but how you see yourself & how you let others see you, you must look deeper to actually see true beauty.*



D. NO. 3005







## Vintage Finesse

subtle and exuding a vintage appeal.

*There is a beauty about a woman whose confidence comes from experience; who knows she can face, pick herself up & move on.*



D.NO. 3007



TEXTILE DEAL

kala  
feminine forever & ever...

Meher





**kala**  
Textile Trends & more...

*Meher*



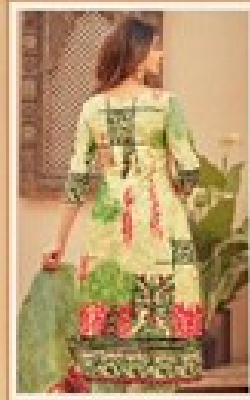
TEXTILE DEAL





**kala**  
Textile Store & more

*Meher*



TEXTILE DEAL







D. NO. 3010



TEXTILE DEAL



**kala**  
feminine forever & ever.  
*Meher*



TEXTILE DEAL





**kala**  
textile fabrics & more  
*Meher*



TEXTILE DEAL



D. 90. 2012





D.NO.3001



D.NO.3002



D.NO.3003



D.NO.3004



D.NO.3005



D.NO.3006



# Meher VOL-5

**kala**  
feminine forever & ever...



D.NO.3007



D.NO.3008



D.NO.3009



D.NO.3010



D.NO.3011



D.NO.3012



Callogue Name	<b>Meher Vol - 5</b>
Total No. of Designs	<b>12</b>
No. of Set-I Parcel	<b>8</b>
No. of Pcs-I Parcel	<b>96</b>

**TEXTILE DEAL**