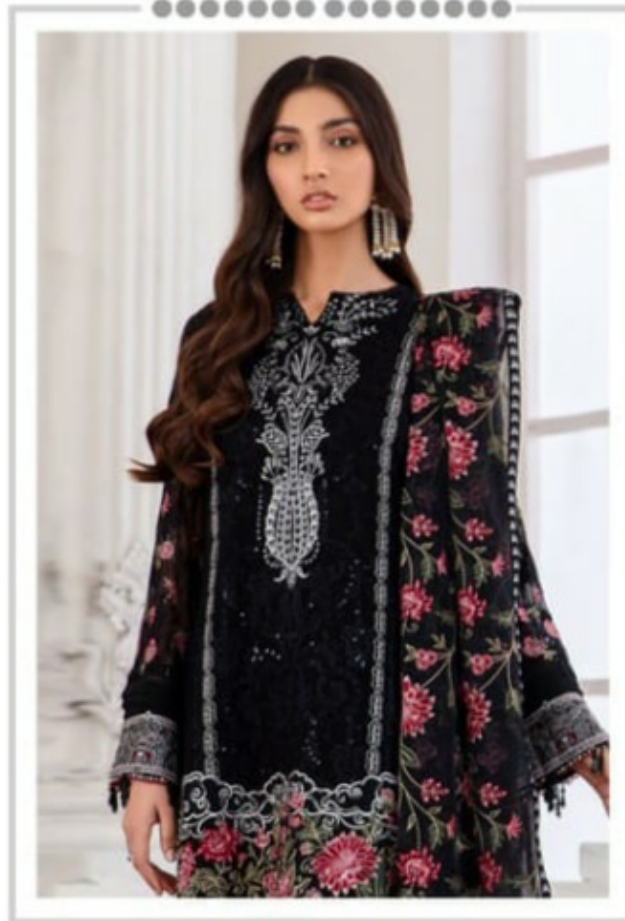



Ramsha[®]
VOL-26





#R-367



TOP- NET KALI WITH HEAVY EMBROIDERY
BOTTOM- DULL SANTOON
DUPATTA - NET WITH HEAVY EMBROIDERY

Ⓟ DRY CLEAN ONLY.
✗ DO NOT USE ANY BLEACH OR STAIN REMOVING CHEMICAL.
☐ IRON THE FABRIC AT MODERATE TEMPERATURE.

**Ramsha**[®]

#R-368



TOP- NET WITH HEAVY EMBROIDERY WORK
BOTTOM- DULL SANTOON
DUPATTA - NET WITH HEAVY EMBROIDERY WORK

Ⓟ DRY CLEAN ONLY.
✘ DO NOT USE ANY BLEACH OR STAIN REMOVING CHEMICAL.
☎ IRON THE FABRIC AT MODERATE TEMPERATURE.



#R-369



TOP- FOX GEORGET WITH HEAVY EMBROIDERY
BOTTOM- DULL SANTOON
DUPATTA - NAZMEEN WITH HEAVY EMBROIDERY



Ⓟ DRY CLEAN ONLY.
ⓧ DO NOT USE ANY BLEACH OR STAIN REMOVING CHEMICAL.
Ⓡ IRON THE FABRIC AT MODERATE TEMPERATURE.

**Ramsha**[®]

#R-370



TOP- FOX GEORGET WITH HEAVY EMBROIDERY
BOTTOM- DULL SANTOON
DUPATTA - NAZMEEN WITH HEAVY EMBROIDERY

Ⓟ DRY CLEAN ONLY.
DO NOT USE ANY BLEACH OR STAIN REMOVING CHEMICAL.
☄ IRON THE FABRIC AT MODERATE TEMPERATURE.

Ramsha®
VOL-26



#R-367



#R-368



#R-369



#R-370

Ramsha®
VOL-26







