



S
SUSHMA®

Golden

S
SUSHMA®

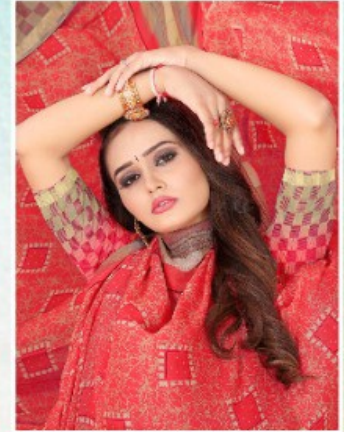
Relam *Fantasy*

Brightens up yourself with an array of florals in cool hue on soft surface that will take you through the season in style.



TEXTILE DEAL

S
SUSHMA®



Ethnic *Elements*

The ethnic elements of Indian fashion from traditional design to customary essential hints of folk and vibrant regional culture, contemporary stance and hand-drawn personality designed.



19003 B

S
SUSHMA®

Vivid Colours

Celebrate your sophisticated side with the festival collection's intricate embroidery and elaborate design, with its stunning crystal work and stylish border, you'll surely be in the spotlight!



TEXTILE DEAL

S
SUSHMA®

Season Trends

Her smile can stop time in this new season welcome to the days of covetable collectible cloths, this kind of fashion permits alterations in new modes and new style which are suddenly termed



19001 B



19001 A



19001 B



19002 A



19002 B



19003 A



19003 B



19004 A



19004 B

TEXTILE DEAL

S
SUSHMA®

Pretty Gorgeous

There's plenty of pretty gorgeous floral prints in exotic color combination, you will find a variety of muted hues and much more.



TEXTILE DEAL

S
SUSHMA®

Fashion Showcase

When it comes to the best of fashion, the more you know, the more you will appreciate the style. Always depend on good color and fantastic combination of shades.



19002 B

S
SUSHMA®



Purely *Heaven*

Pure heavenly design by fabrics
gently crafted using the finest virgin fabrics
created untouched for fashion to come
purely bring out the virgin deep within you.

S
SUSHMA®



Beauty *fashion*

from the Sushma archives to
current TREND reports, the
one constant factor is the
influence of CERTAIN ethnocentric
redesigner collection.

TEXTILE DEAL

19004 B



S
SUSHMA[®]
GOLDEN

TEXTILE DEAL