



KALKI

ESTABLISHED 1988

# ILLANO



SAWI DUPATTA  
STORY

EMBROIDERY  
EDGE



TEXTILE DEAL



*Creating a Story*  
CHERRY PEARL

*Traditional Indian culture is defined by a relatively strict social hierarchy and the culture of modern India is a complex blend of its historical and social evolution.*

K 25002

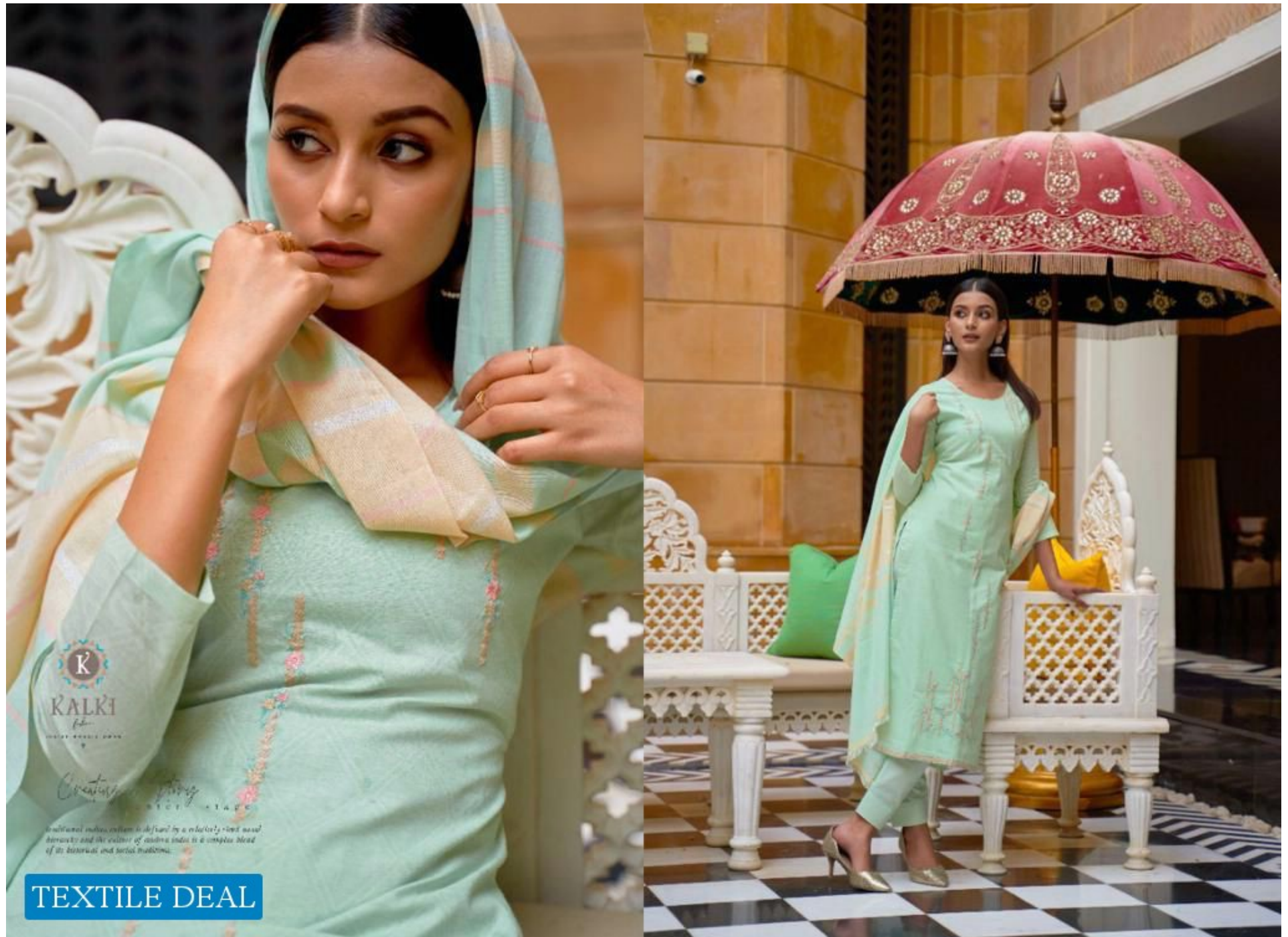
K  
KALKI  
ESTD. 1993

TEXTILE DEAL





TEXTILE DEAL



K  
KALKI  
the  
INDIAN BRIDGE BRAND

*Creative*  
SINCE 1988

*Traditional Indian culture is defined by a relatively strict social hierarchy and the culture of modern India is a complex blend of its historical and social traditions.*

**TEXTILE DEAL**



*Creating a Story*  
ONCE UPON A TIME

traditional indian culture is defined by a rich history and social  
heritage and the culture of modern india is a complex blend  
of its history and social evolution.

**TEXTILE DEAL**





K 25001



K 25002



K 25005



K 25006



K 25004

EMBROIDERY  
EDGE

SAWL DUPATTA  
STORY



*Creating a Story*  
SINCE 1980

*Traditional Indian culture is defined by a relatively strict social hierarchy and the culture of modern India is a complex blend of an historical and social tradition.*

TEXTILE DEAL



TEXTILE DEAL



K  
KALKI  
ESTD. 1988

*Creating a Story*  
CANTO SERVO

*traditional Indian culture is defined by a solemnity in its social hierarchy and the culture of modern India is a complex blend of its national and social traditions.*

K 25004