



A woman with long, dark, wavy hair is the central figure, wearing a vibrant yellow sari with a subtle pattern of small, dark, diamond-shaped motifs. Her blouse is also yellow, featuring a prominent vertical band of intricate silver and black embroidery down the center, with circular decorative elements on the chest. She is adorned with large hoop earrings, a bindi on her forehead, and several rings on her fingers. Her hands are clasped in front of her. The background is a rustic setting with a thatched-roof structure, possibly a hut or a traditional building, with warm, golden light illuminating the scene. The word "Glamour" is overlaid in a stylized, yellow, serif font on the left side of the image.

Glamour

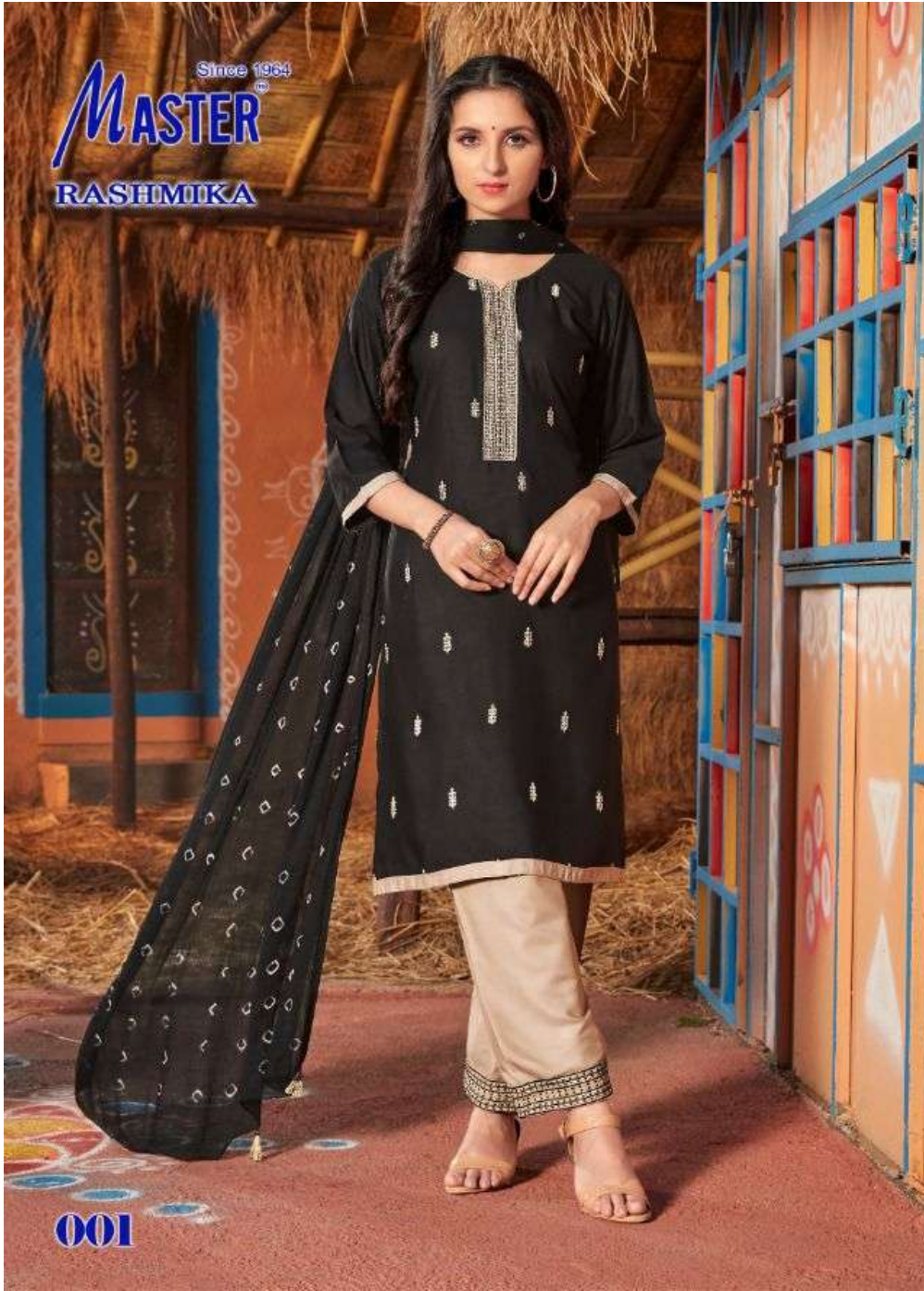
Since 1964  
**MASTER**<sup>®</sup>

**RASHMIKA**









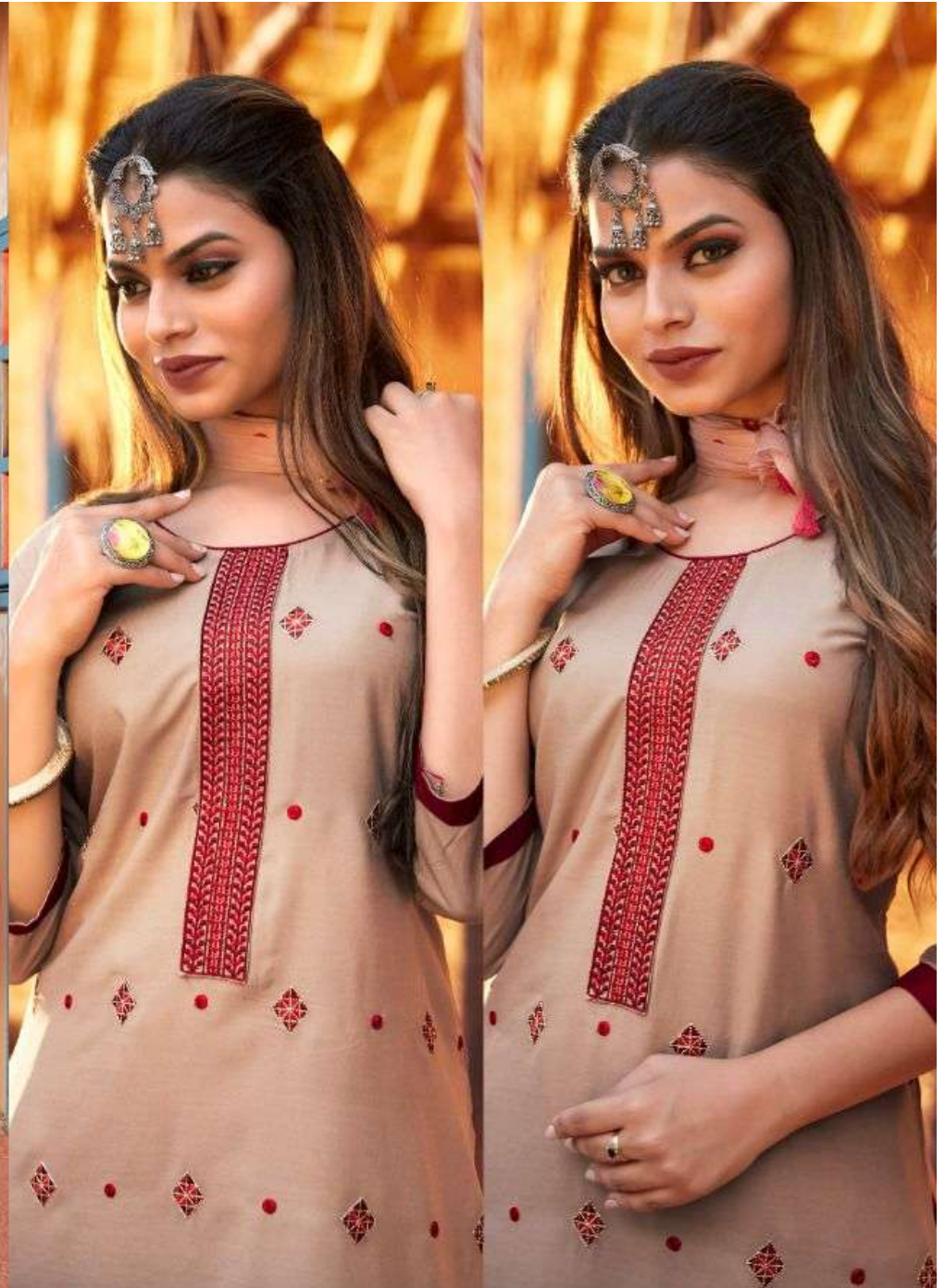
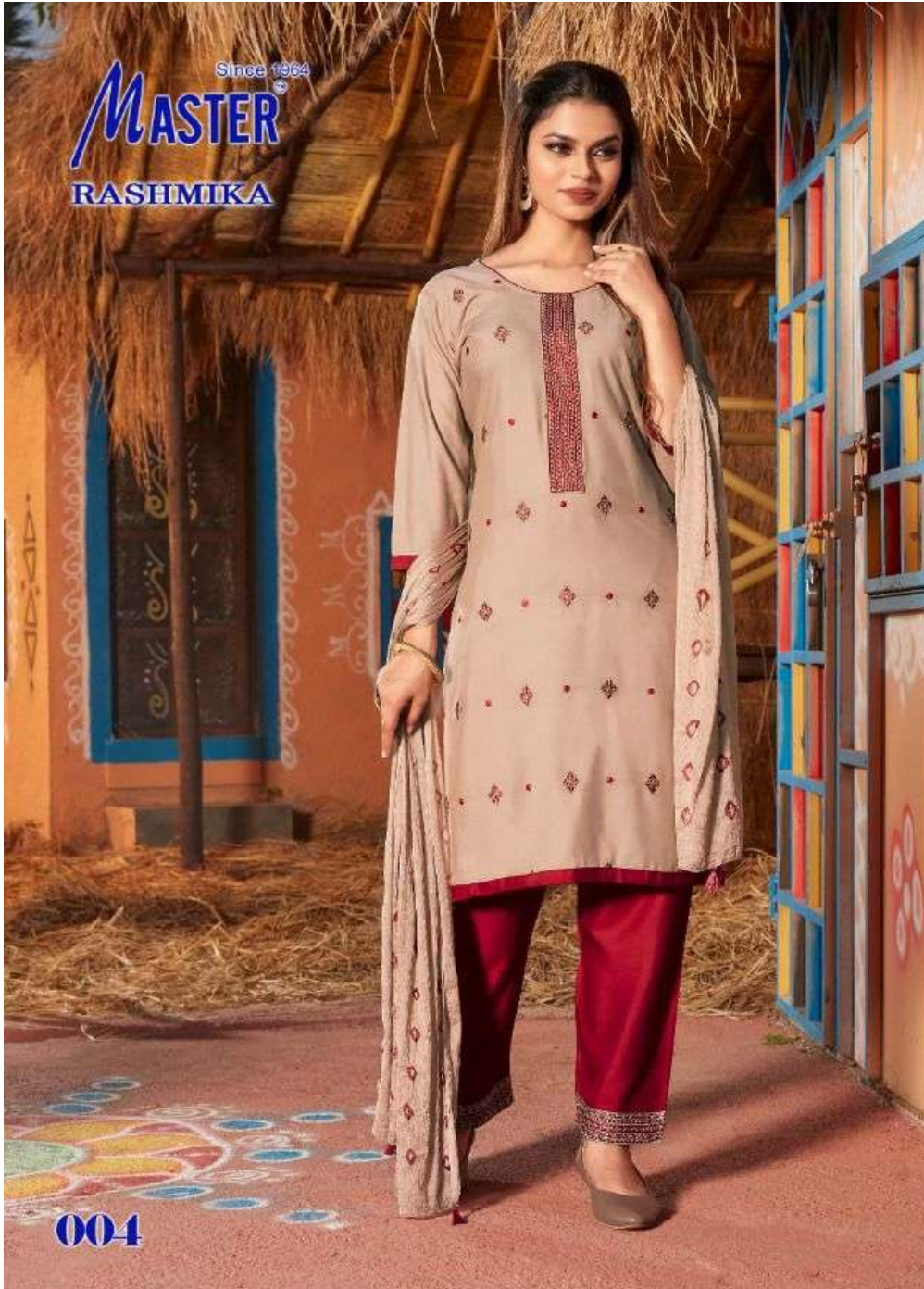


Since 1984  
**MASTER**  
RASHMIKA



002









Since 1964  
**MASTER**  
RASHMIKA

006



**001**



**002**



**003**



**004**



**005**



**006**



**007**



**008**