

### ST-501 E

**TOP** - PURE CAMBRIC CHICKENKARI HEAVY EMBROIDERY

**BOTTOM** - PURE COTTON WITH EMBROIDERY PATCH

**DUPATTA** - KOTA CHECKS WITH DIGITAL PRINT

TEXTILE DEAL

DRY CLEAN ONLY. (P)  
DO NOT USE ANY BLEACH OR STAIN REMOVEG CHEMICAL. (X)  
IRON THE FABRIC AT MODERATE TEMPERATURE. (I)





### ST-501 C

**TOP** - PURE CAMBRIC CHICKENKARI HEAVY EMBROIDERY

**BOTTOM** - PURE COTTON WITH EMBROIDERY PATCH

**DUPATTA** - KOTA CHECKS WITH DIGITAL PRINT

TEXTILE DEAL

DRY CLEAN ONLY. (P)  
DO NOT USE ANY BLEACH OR STAIN REMOVEG CHEMICAL. (X)  
IRON THE FABRIC AT MODERATE TEMPERATURE. (I)





## ST-501 B

**TOP** - PURE CAMBRIC CHICKENKARI HEAVY EMBROIDERY

**BOTTOM** - PURE COTTON WITH EMBROIDERY PATCH

**DUPATTA** - KOTA CHECKS WITH DIGITAL PRINT

TEXTILE DEAL

DRY CLEAN ONLY. (P)  
DO NOT USE ANY BLEACH OR STAIN REMOVEG CHEMICAL. (X)  
IRON THE FABRIC AT MODERATE TEMPERATURE. (I)





**TOP** - PURE CAMBRIC CHICKENKARI HEAVY EMBROIDERY

**BOTTOM** - PURE COTTON WITH EMBROIDERY PATCH

**DUPATTA** - KOTA CHECKS WITH DIGITAL PRINT



TEXTILE DEAL B



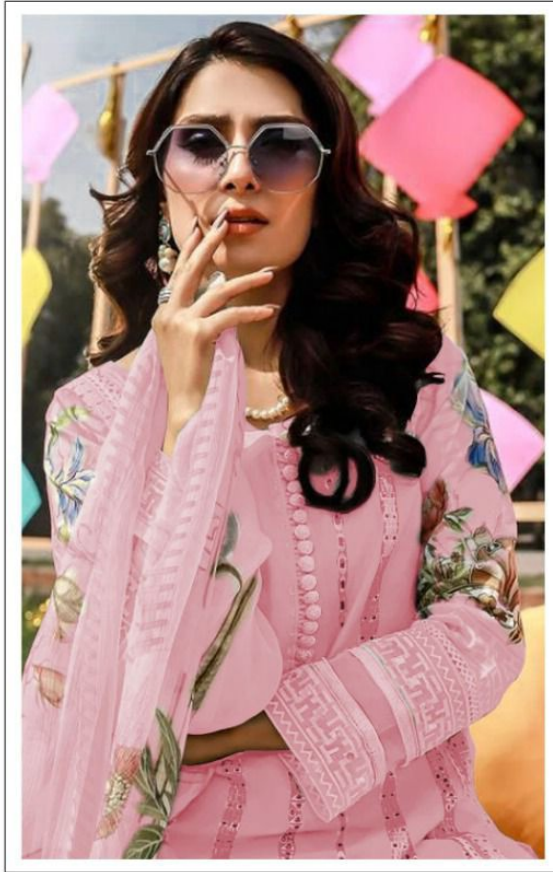
ST-501 C



ST-501 D



ST-501 E



### ST-501 D

**TOP** - PURE CAMBRIC CHICKENKARI HEAVY EMBROIDERY

**BOTTOM** - PURE COTTON WITH EMBROIDERY PATCH

**DUPATTA** - KOTA CHECKS WITH DIGITAL PRINT

TEXTILE DEAL

DRY CLEAN ONLY. (P)  
DO NOT USE ANY BLEACH OR STAIN REMOVEG CHEMICAL. (X)  
IRON THE FABRIC AT MODERATE TEMPERATURE. (I)

