

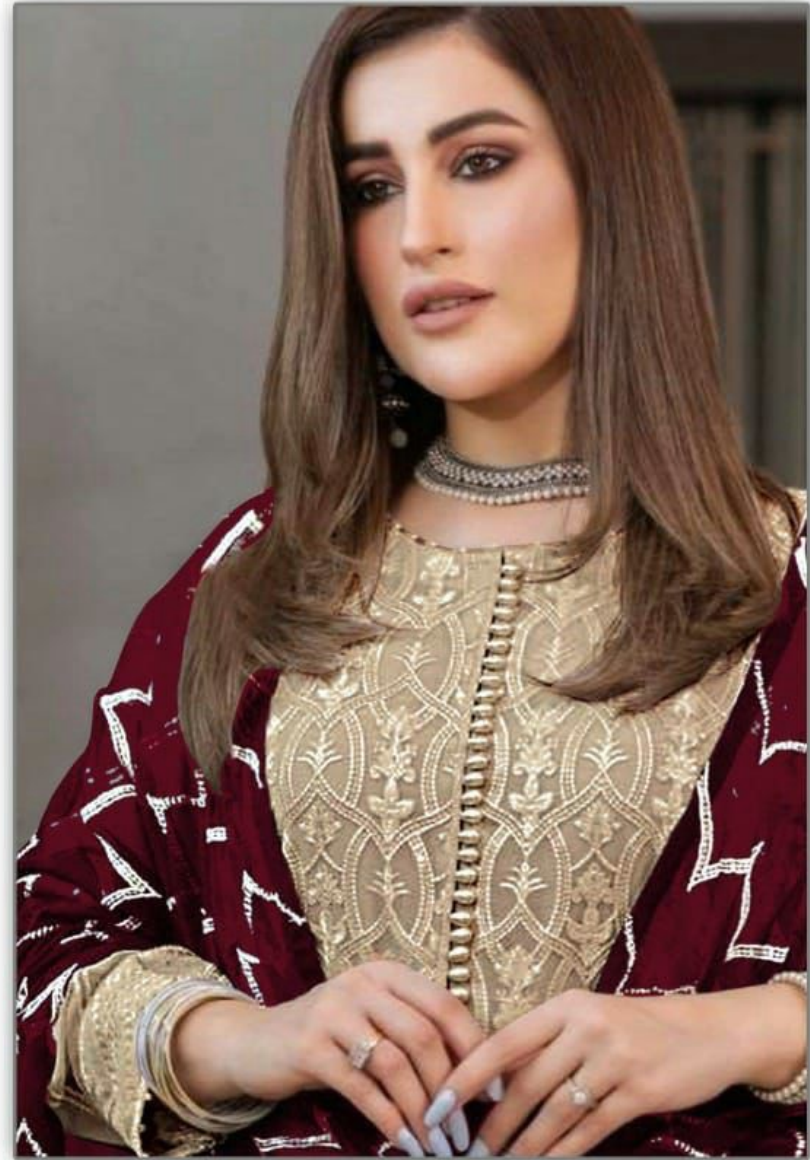
Kilruba[®]
TRANSFORMING FASHION



TEXTILE DEAL



TEXTILE DEAL



**TOP-HEAVY JEORGETTE
WITH EMBROIDERY
BOTTOM/NER-SANTOON
DUPATTA- JEORGETTE
WITH EMBROIDERY**

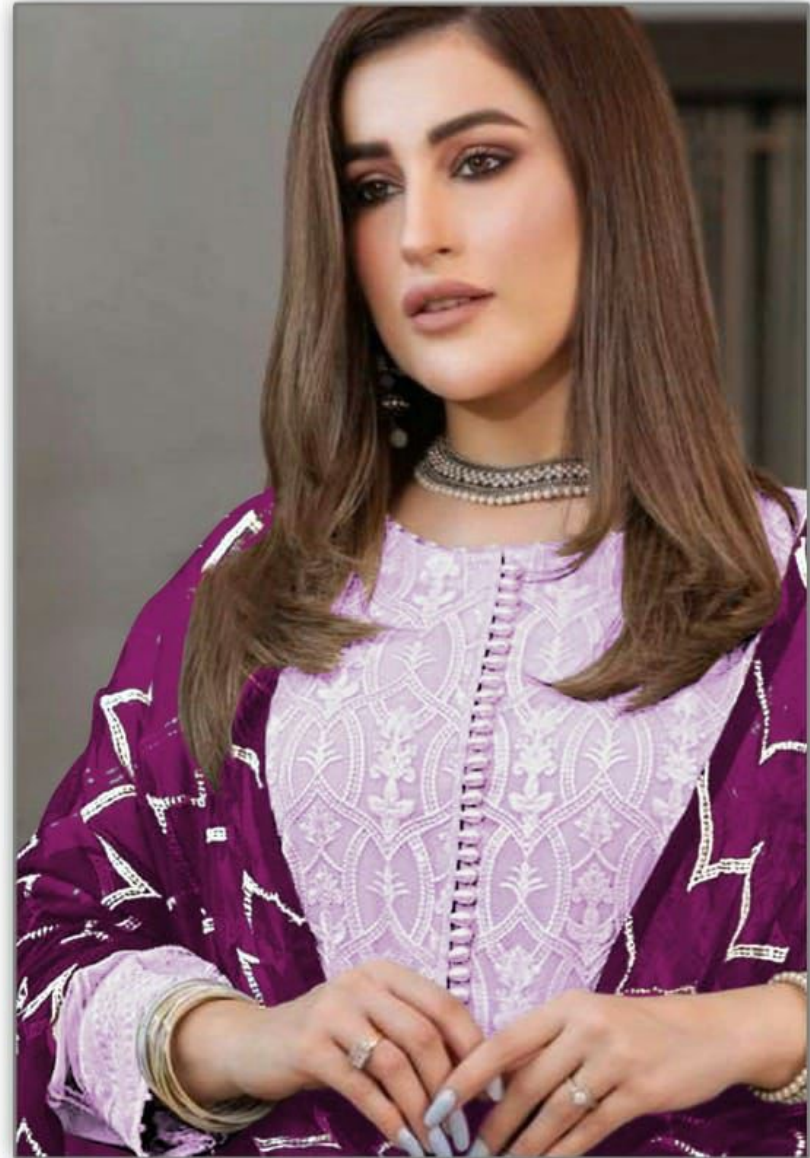
K-212-A

WASHING INSTRUCTIONS
DO NOT USE ANY TYPE OF BLEACH OR STRONG BLEACHING CHEMICALS
BEFORE CUTTING/STITCHING FABRIC SHOULD BE SOAKED IN WATER
(ALL COMPONENTS SEPARATELY) FOR 15 MINUTES
DO NOT KEEP WET FABRIC IN TWISTED FORM IN ORDER TO AVOID COUP MARKS
WASH COLOURED AND WHITE FABRICS SEPARATELY
IRON CLOTHES AT MODERATE TEMPERATURE (DO NOT DRY FABRIC IN DIRECT SUNLIGHT
(EXTRA LACES/HANGINGS AND ACCESSORIES ARE NOT INCLUDED)



Kilruba
TRANSFORMING FASHION

TEXTILE DEAL



**TOP-HEAVY JEORGETTE
WITH EMBROIDERY
BOTTOM/NER-SANTOON
DUPATTA- JEORGETTE
WITH EMBROIDERY**

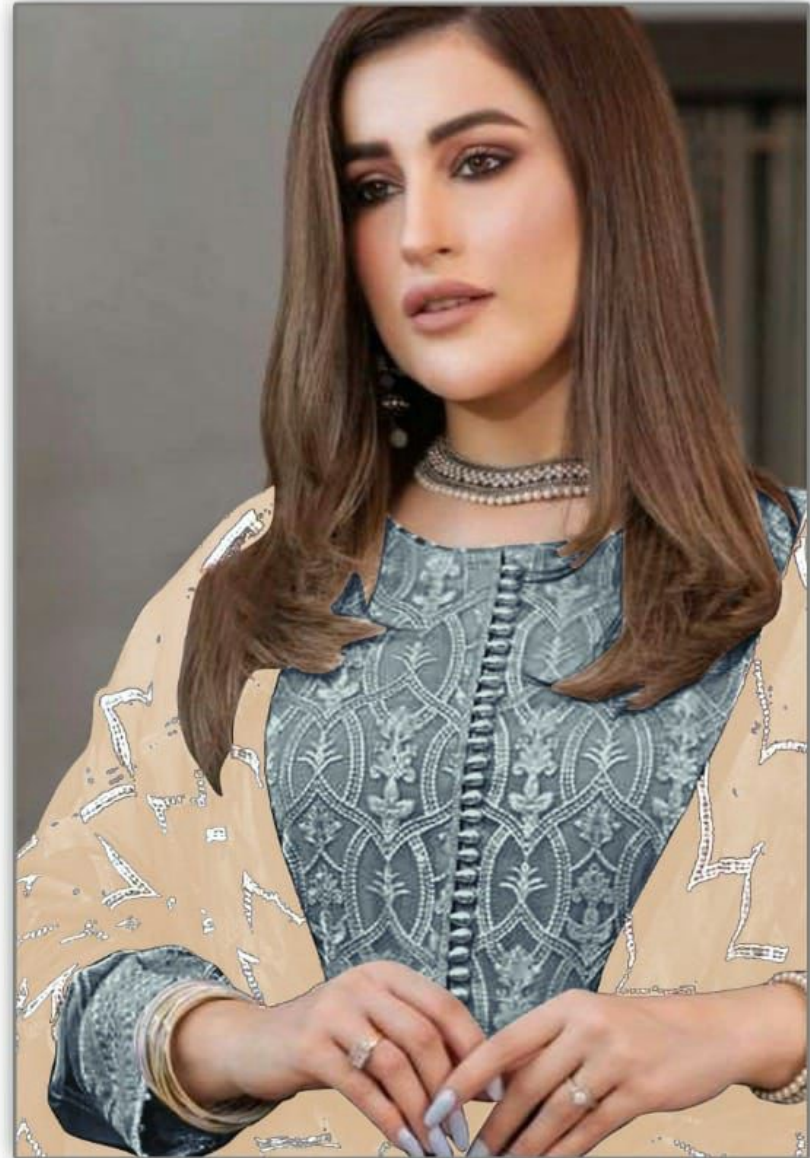
K-212-C

WASHING INSTRUCTIONS

DO NOT USE ANY TYPE OF BLEACH OR STAIN REMOVING CHEMICALS
BEFORE CUTTING/STITCHING FABRIC SHOULD BE SOAKED IN WATER
(ALL COMPONENTS SEPARATELY) FOR 15 MINUTES
DO NOT KEEP WET FABRIC IN TWISTED FORM IN ORDER TO AVOID COUP MARKS
WASH COLOURED AND WHITE FABRICS SEPARATELY
IRON CLOTHES AT MODERATE TEMPERATURE (DO NOT DRY FABRIC IN DIRECT SUNLIGHT
(EXTRA LACES/HANGINGS AND ACCESSORIES ARE NOT INCLUDED)



TEXTILE DEAL



**TOP-HEAVY JEORGETTE
WITH EMBROIDERY
BOTTOM/NER-SANTOON
DUPATTA- FJEORGETTE
WITH EMBROIDERY**

K-212-B

WASHING INSTRUCTIONS
DO NOT USE ANY TYPE OF BLEACH OR STAIN REMOVING CHEMICALS
BEFORE CUTTING/STITCHING FABRIC SHOULD BE SOAKED IN WATER
(ALL COMPONENTS SEPARATELY) FOR 15 MINUTES
DO NOT KEEP WET FABRIC IN TWISTED FORM IN ORDER TO AVOID COUP MARKS
WASH COLOURED AND WHITE FABRICS SEPARATELY
IRON CLOTHES AT MODERATE TEMPERATURE (DO NOT DRY FABRIC IN DIRECT SUNLIGHT
(EXTRA LACES/HANGINGS AND ACCESSORIES ARE NOT INCLUDED)



TEXTILE DEAL



**TOP-HEAVY JEORGETTE
WITH EMBROIDERY
BOTTOM/NER-SANTOON
DUPATTA- JEORGETTE
WITH EMBROIDERY**

K-212-D

WASHING INSTRUCTIONS
DO NOT USE ANY TYPE OF BLEACH OR STAIN REMOVING CHEMICALS
BEFORE CUTTING/STITCHING FABRIC SHOULD BE SOAKED IN WATER
(ALL COMPONENTS SEPARATELY) FOR 15 MINUTES
DO NOT KEEP NET FABRIC IN TWISTED FORM IN ORDER TO AVOID COUP MARKS
WASH COLOURED AND WHITE FABRICS SEPARATELY
IRON CLOTHES AT MODERATE TEMPERATURE (DO NOT DRY FABRIC IN DIRECT SUNLIGHT
(EXTRA LACES/HANGINGS AND ACCESSORIES ARE NOT INCLUDED)