

Kilruba[®]
TRANSFORMING FASHION

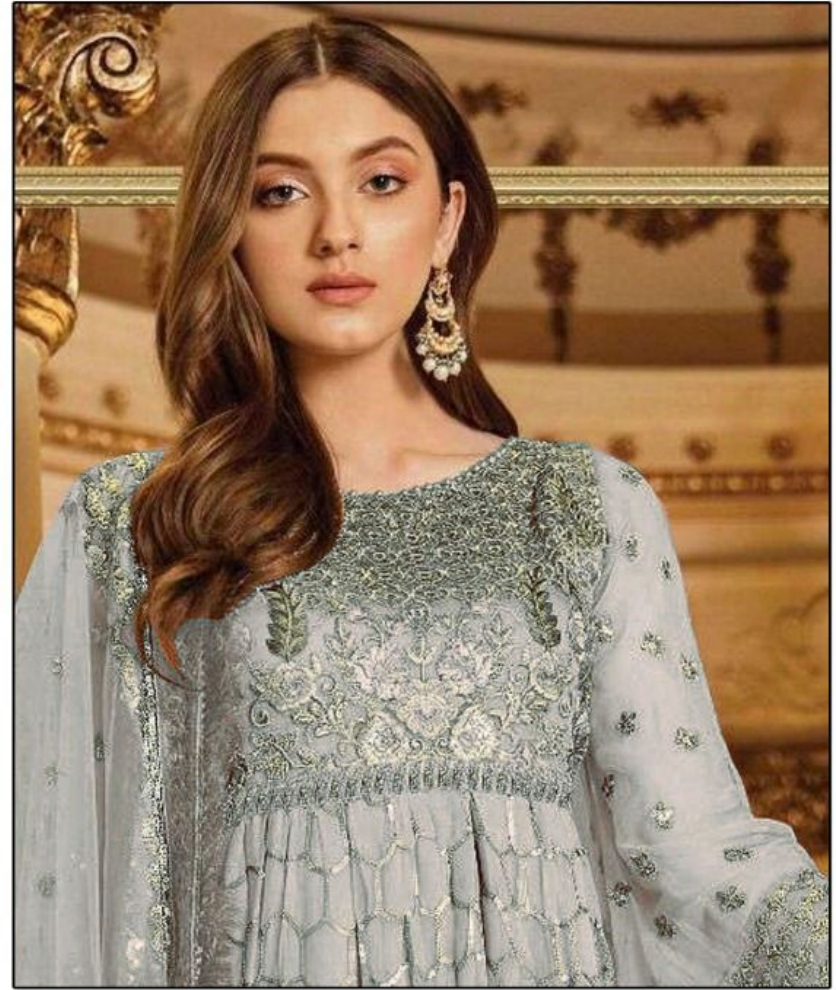


TEXTILE DEAL



Kilruba®
TRANSFORMING FASHION

TEXTILE DEAL

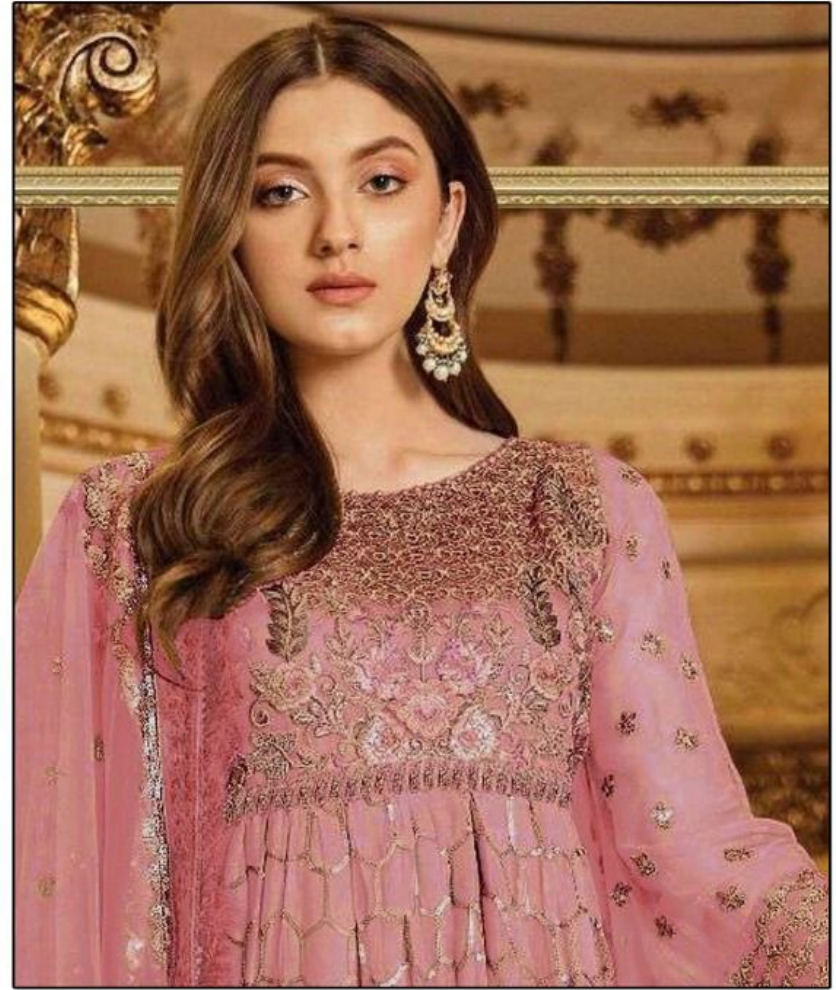


D-NO-K-216-A

**TOP-HEAVY GEORGETTE
WITH EMBROIDERY**
BOTTOM/INER-SANTOON
**DUPATTA- HEAVY NAZMEEN
CHIFFON WITH EMBROIDERY**

WASHING INSTRUCTIONS

DO NOT USE ANY TYPE OF BLEACH OR STAIN REMOVING CHEMICALS
BEFORE CUTTING/STITCHING FABRIC SHOULD BE SOAKED BE SOAKED IN WATER
(ALL COMPONENTS SEPARATELY) FOR 15 MINUTES
DO NOT KEEP WET FABRIC IN TWISTED FORM IN ORDER TO AVOID COP MARKS
WASH COLOURED AND WHITE FABRICS SEPARATELY
IRON CLOTHES AT MODERATE TEMPERATURE (DO NOT DRY FABRIC IN DIRECT SUNLIGHT
(EXTRA LACES, HANGINGS AND ACCESSORIES ARE NOT INCLUDED)



D-NO-K-216-B

**TOP-HEAVY GEORGETTE
WITH EMBROIDERY
BOTTOM/INER-SANTOON
DUPATTA- HEAVY NAZMEEN
CHIFFON WITH EMBROIDERY**

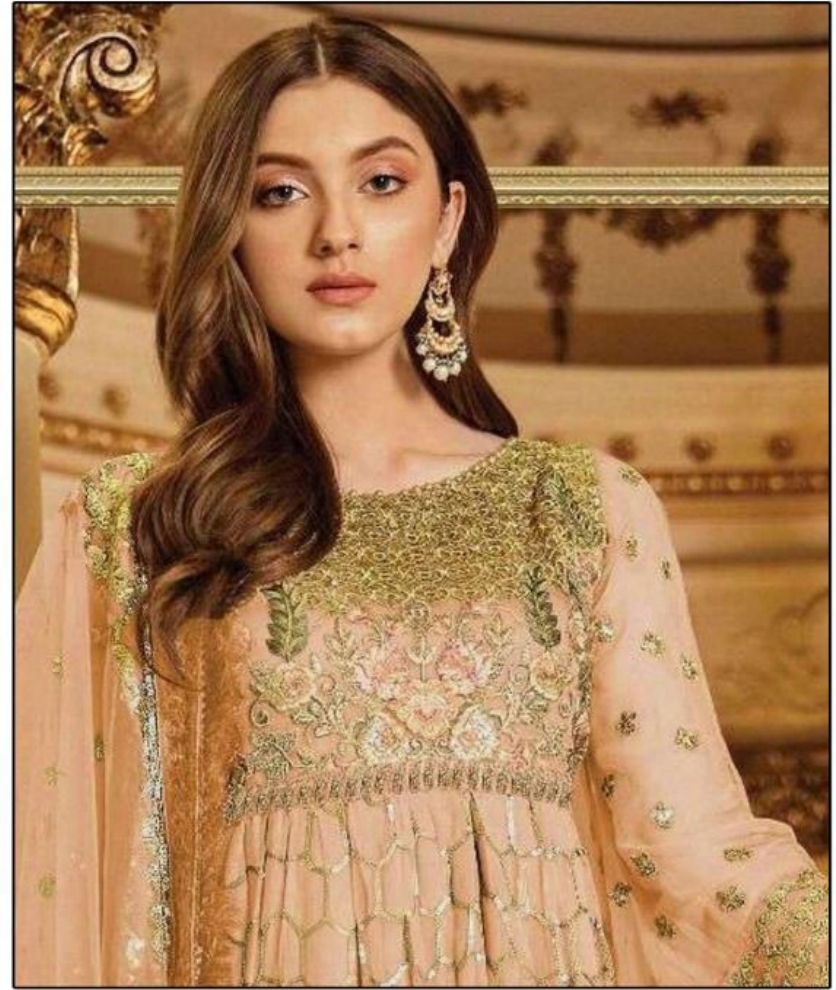
WASHING INSTRUCTIONS

DO NOT USE ANY TYPE OF BLEACH OR STAIN REMOVING CHEMICALS
BEFORE CUTTING/STITCHING FABRIC SHOULD BE SOAKED IN WATER
(ALL COMPONENTS SEPARATELY) FOR 15 MINUTES
DO NOT KEEP WET FABRIC IN TWISTED FORM IN ORDER TO AVOID COP MARKS
WASH COLOURED AND WHITE FABRICS SEPARATELY
IRON CLOTHES AT MODERATE TEMPERATURE (DO NOT DRY FABRIC IN DIRECT SUNLIGHT
(EXTRA LACES, HANGINGS AND ACCESSORIES ARE NOT INCLUDED)



Kilruba®
TRANSFORMING FASHION

TEXTILE DEAL



D-NO-K-216

**TOP-HEAVY GEORGETTE
WITH EMBROIDERY
BOTTOM/INER-SANTOON
DUPATTA- HEAVY NAZMEEN
CHIFFON WITH EMBROIDERY**

WASHING INSTRUCTIONS

DO NOT USE ANY TYPE OF BLEACH OR STAIN REMOVING CHEMICALS
BEFORE CUTTING/STITCHING.FABRIC SHOULD BE SOAKED BE SOAKED IN WATER
(ALL COMPONENTS SEPRETELY) FOR 15 MINUTES
DO NOT KEEP WET FABRIC IN TWISTED FORM IN ORDER TO AVOID COP'NARSKI
WASH COLOURED AND WHITE FABRICS SEPRETELY
IRON CLOTHES AT MODERATE TEMPERATURE (DO NOT DRY FABRIC IN DIRECT SUNLIGHT
(EXTRA LACES,HANGINGS AND ACCESSORIES ARE NOT INCLUDED)

