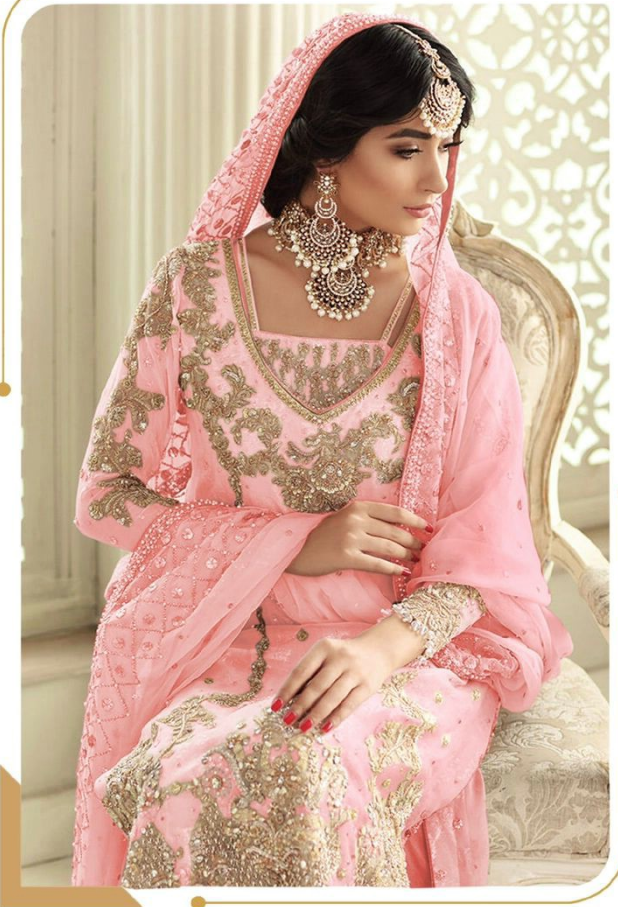




TEXTILE DEAL

  
**SHANAYA**<sup>®</sup>



 S 111-D

**ROSE**  
**Prmium Edition**

**WASHING INSRUCTIONS**  
DO NOT USE TYPE OF BLEACH OR STAIN REMOVING CHEMICALS  
BEFORE CUTTING / STITHING , FABRIC SHOULD BE SMOKED BE SOAKED IN WATER  
( ALL COMPONENTS SEPARATELY ) FOR 15 MINUTES  
DO BOT KEEP WET FABRIC IN TWISTED FROM IN ORDER TO AVOID COPY MARKS I  
IRON CLOTHES AT MODRATE TEMPERATURE I DO NOT DRY FABRIC IN DIRECT SUNLIGHT  
( EXTRA LACFS , HANGINGS AND ACCESSORIFS ARE NOT IN DUDFD )





TEXTILE DEAL

  
**SHANAYA**<sup>®</sup>



 S 111-B

**ROSE**  
**Primium Edition**

**WASHING INSRUCTIONS**  
DO NOT USE TYPE OF BLEACH OR STAIN REMOVING CHEMICALS  
BEFORE CUTTING / STITHING , FABRIC SHOULD BE SMOKED BE SOAKED IN WATER  
( ALL COMPONENTS SEPARATELY ) FOR 15 MINUTES  
DO BOT KEEP WET FABRIC IN TWISTED FROM IN ORDER TO AVOID COPY MARKS I  
IRON CLOTHES AT MODRATE TEMPERATURE I DO NOT DRY FABRIC IN DIRECT SUNLIGHT  
( EXTRA LACFS , HANGINGS AND ACCESSORIFS ARE NOT IN DUDED )





TEXTILE DEAL

**SHANAYA**<sup>®</sup>



**S 111-C**

**ROSE**  
**Primium Edition**

**WASHING INSRUCTIONS**  
DO NOT USE TYPE OF BLEACH OR STAIN REMOVING CHEMICALS  
BEFORE CUTTING / STITHING , FABRIC SHOULD BE SMOKE BE SOAKED IN WATER  
( ALL COMPONENTS SEPARATELY ) FOR 15 MINUTES  
DO BOT KEEP WET FABRIC IN TWISTED FROM IN ORDER TO AVOID COPY MARKS I  
IRON CLOTHES AT MODRATE TEMPERATURE I DO NOT DRY FABRIC IN DIRECT SUNLIGHT  
( EXTRA LACFS , HANGINGS AND ACCESSORIFIS ARE NOT IN DUDED )





# ROSE

Prmium Edition



TEXTILE DEAL

S 111-B



S 111-C



S 111-D