



# MARYAM'S

GOLD VOL-21



**RINAZ**  
FASHION

D.NO.55003



TEXTILE DEAL

TOP - FOX GEORGETTE  
BOTTOM/INNER - HEAVY SHANTUN  
DUPATTA - NAZNIN



**WASHING INSTRUCTIONS**

DO NOT USE ANY TYPE OF BLEACH OR STAIN REMOVING CHEMICALS  
BEFORE CUTTING / STITCHING. FABRIC SHOULD BE SOAKED IN WATER  
(ALL COMPONENTS SEPARATELY) FOR 15 MINUTES  
DO NOT KEEP WET FABRIC IN TWISTED FORM IN ORDER TO AVOID COPY MARKS !  
WASH COLOURED AND WHITE FABRICS SEPARATELY  
IRON CLOTHES AT MODERATE TEMPERATURE ! DO NOT DRY FABRIC IN DIRECT SUNLIGHT  
( EXTRA LACES , HANGING AND ACCESSORIES ARE NOT INCLUDED)





**RINAZ<sup>®</sup>**  
FASHION

D.NO.55004



TEXTILE DEAL

TOP - FOX GEORGETTE  
BOTTOM/INNER - HEAVY SHANTUN  
DUPATTA - NAZNIN



**WASHING INSTRUCTIONS**

DO NOT USE ANY TYPE OF BLEACH OR STAIN REMOVING CHEMICALS  
BEFORE CUTTING / STITCHING. FABRIC SHOULD BE SOAKED IN WATER  
(ALL COMPONENTS SEPARATELY) FOR 15 MINUTES  
DO NOT KEEP WET FABRIC IN TWISTED FORM IN ORDER TO AVOID COPY MARKS !  
WASH COLOURED AND WHITE FABRICS SEPARATELY  
IRON CLOTHES AT MODERATE TEMPERATURE ! DO NOT DRY FABRIC IN DIRECT SUNLIGHT  
( EXTRA LACES , HANGING AND ACCESSORIES ARE NOT INCLUDED)





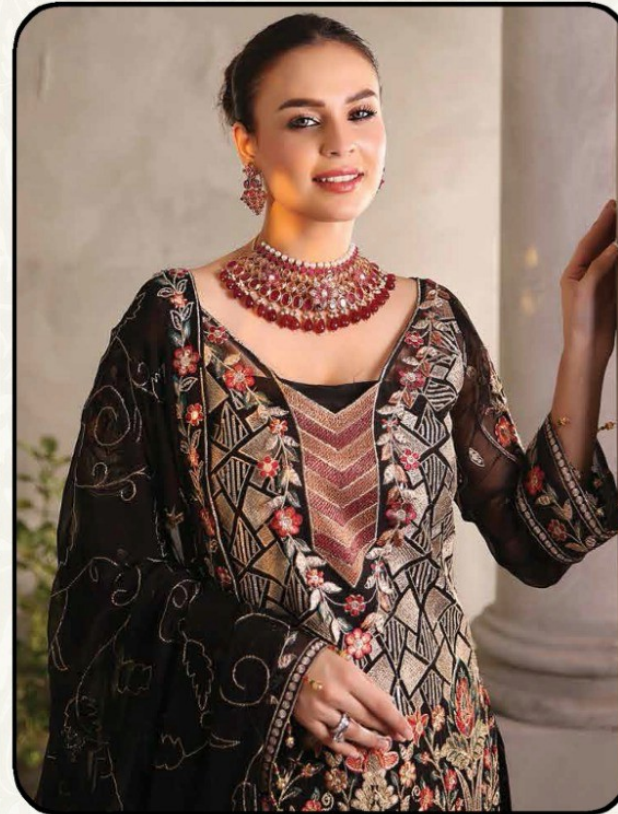
**RINAZ**<sup>®</sup>  
FASHION

D.NO.55005



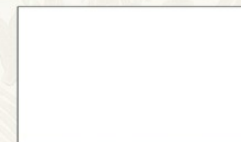
TEXTILE DEAL

TOP - FOX GEORGETTE  
BOTTOM/INNER - HEAVY SHANTUN  
DUPATTA - NAZNIN



**WASHING INSTRUCTIONS**

DO NOT USE ANY TYPE OF BLEACH OR STAIN REMOVING CHEMICALS  
BEFORE CUTTING / STITCHING. FABRIC SHOULD BE SOAKED IN WATER  
(ALL COMPONENTS SEPARATELY) FOR 15 MINUTES  
DO NOT KEEP WET FABRIC IN TWISTED FORM IN ORDER TO AVOID COPY MARKS !  
WASH COLOURED AND WHITE FABRICS SEPARATELY  
IRON CLOTHES AT MODERATE TEMPERATURE ! DO NOT DRY FABRIC IN DIRECT SUNLIGHT  
( EXTRA LACES , HANGING AND ACCESSORIES ARE NOT INCLUDED)





**RINAZ<sup>®</sup>**  
FASHION

D.NO.55002



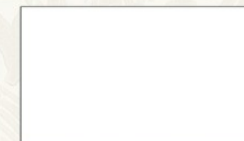
TEXTILE DEAL

TOP - FOX GEORGETTE  
BOTTOM/INNER - HEAVY SHANTUN  
DUPATTA - NAZNIN



**WASHING INSTRUCTIONS**

DO NOT USE ANY TYPE OF BLEACH OR STAIN REMOVING CHEMICALS  
BEFORE CUTTING / STITCHING. FABRIC SHOULD BE SOAKED IN WATER  
(ALL COMPONENTS SEPARATELY) FOR 15 MINUTES  
DO NOT KEEP WET FABRIC IN TWISTED FORM IN ORDER TO AVOID COPY MARKS !  
WASH COLOURED AND WHITE FABRICS SEPARATELY  
IRON CLOTHES AT MODERATE TEMPERATURE ! DO NOT DRY FABRIC IN DIRECT SUNLIGHT  
( EXTRA LACES , HANGING AND ACCESSORIES ARE NOT INCLUDED)





**RINAZ<sup>®</sup>**  
FASHION

D.NO.55001



TEXTILE DEAL

TOP - FOX GEORGETTE  
BOTTOM/INNER - HEAVY SHANTUN  
DUPATTA - NAZNIN



**WASHING INSTRUCTIONS**

DO NOT USE ANY TYPE OF BLEACH OR STAIN REMOVING CHEMICALS  
BEFORE CUTTING / STITCHING. FABRIC SHOULD BE SOAKED IN WATER  
(ALL COMPONENTS SEPARATELY) FOR 15 MINUTES  
DO NOT KEEP WET FABRIC IN TWISTED FORM IN ORDER TO AVOID COPY MARKS !  
WASH COLOURED AND WHITE FABRICS SEPARATELY  
IRON CLOTHES AT MODERATE TEMPERATURE ! DO NOT DRY FABRIC IN DIRECT SUNLIGHT  
( EXTRA LACES , HANGING AND ACCESSORIES ARE NOT INCLUDED)

