

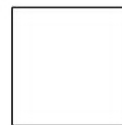


 **P - 10003-B**

**TOP - ORGENZA WITH EMBROIDERY WITH  
KHATLI WORK**

**BOTTOM / INNER - SANTOON**

**DUPATTA - ORGENZA WITH EMBROIDERY**



  
**Saniya**  
TRENDZ

DRY CLEAN ONLY.   
DO NOT USE ANY BLEACH OR STAIN REMOVING CHEMICAL.   
IRON THE FABRIC AT MODERATE TEMPERATURE. 



**TOP - ORGENZA WITH EMBROIDERY WITH  
KHATLI WORK  
BOTTOM / INNER - SANTOON  
DUPATTA - ORGENZA WITH EMBROIDERY**



**P - 10003-A**

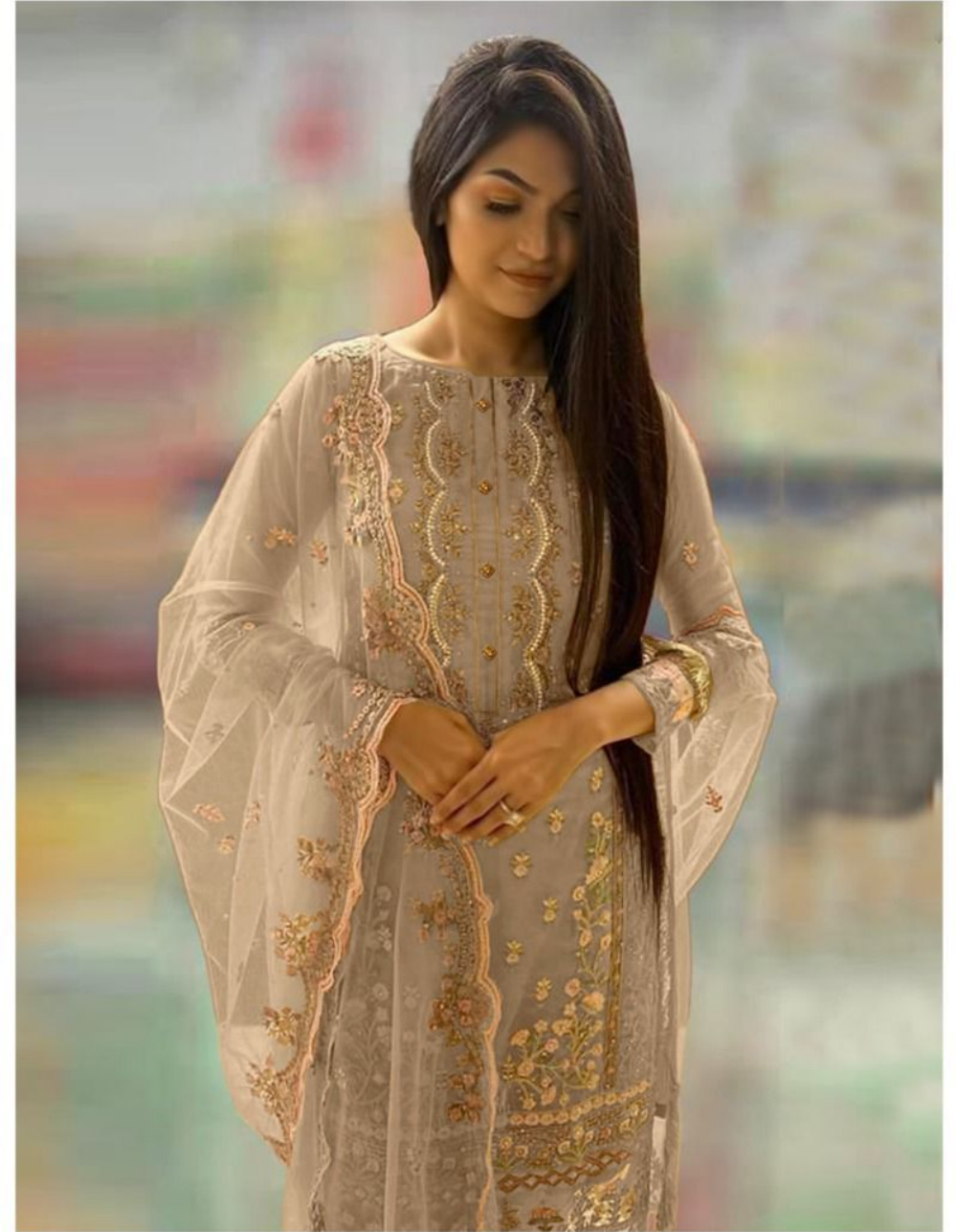


**P - 10003-B**

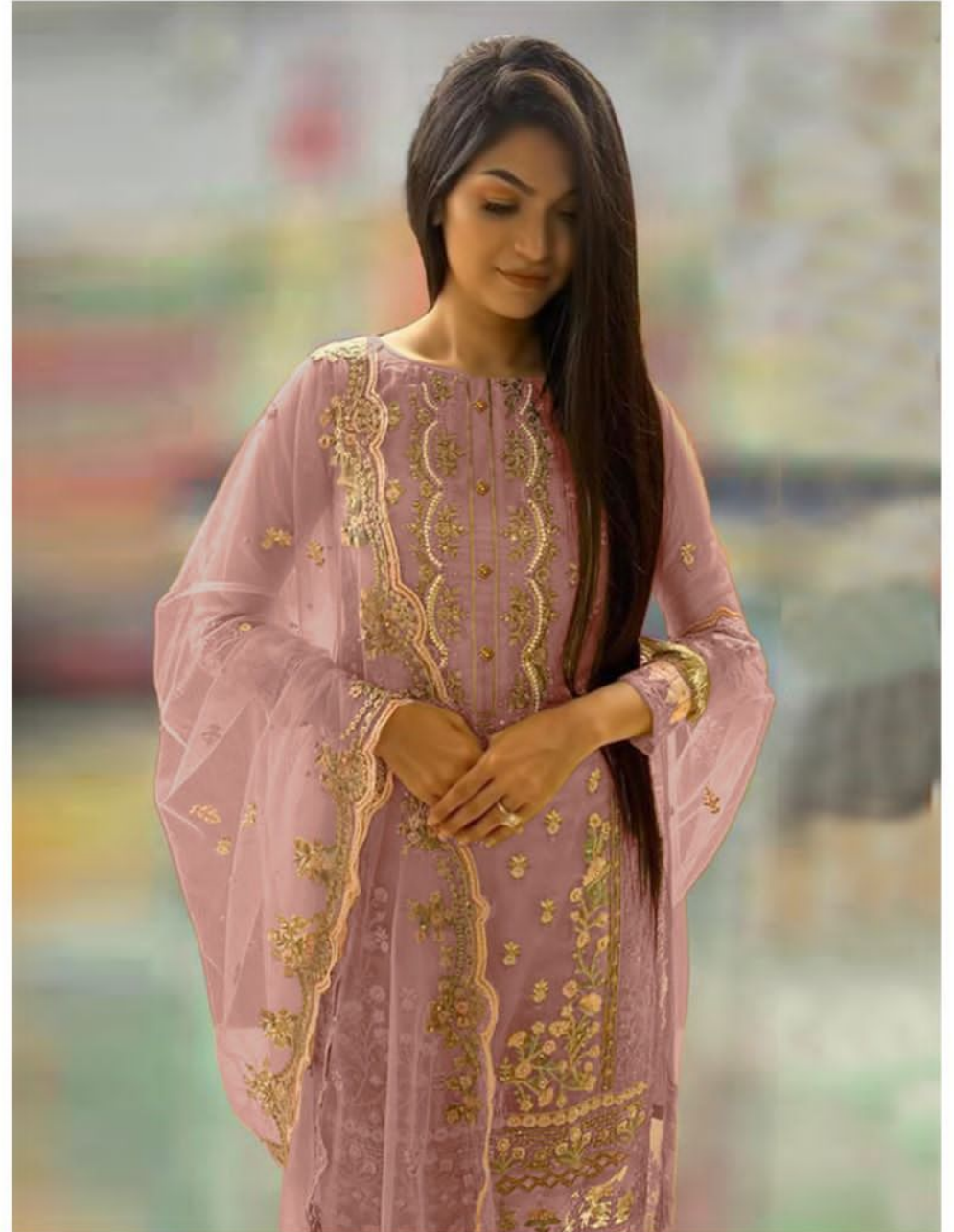


**P - 10003-C**

Saniya  
TRENDZ



P - 10003-B





 **P - 10003-A**

**TOP - ORGENZA WITH EMBROIDERY WITH  
KHATLI WORK**

**BOTTOM / INNER - SANTOON**

**DUPATTA - ORGENZA WITH EMBROIDERY**



  
**Saniya**  
TRENDZ

DRY CLEAN ONLY.   
DO NOT USE ANY BLEACH OR STAIN REMOVING CHEMICAL.   
IRON THE FABRIC AT MODERATE TEMPERATURE. 

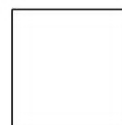


 **P - 10003-C**

**TOP - ORGENZA WITH EMBROIDERY WITH  
KHATLI WORK**

**BOTTOM / INNER - SANTOON**

**DUPATTA - ORGENZA WITH EMBROIDERY**



  
**Saniya**  
TRENZ

DRY CLEAN ONLY.   
DO NOT USE ANY BLEACH OR STAIN REMOVING CHEMICAL.   
IRON THE FABRIC AT MODERATE TEMPERATURE. 

