

ZISA[®]

• ◁ ROSE ▷ •



A woman with long, dark, wavy hair is shown in profile, looking back over her shoulder. She is wearing a dark green, long-sleeved garment with intricate floral embroidery in red, white, and gold. Her hands are raised near her face, and she is wearing large, ornate silver earrings and a ring. The background is a solid, warm brown color.


*Bold hues and rich fabrics
with a beautiful play of intricate
embroideries are all you need
for this season's festivities.*


TEXTILE DEAL



14332



TEXTILE DEAL



Define your unique style with a touch of elegance, beautifully encapsulated in our signature style and embroideries.



14334

TEXTILE DEAL





TEXTILE DEAL



Define your unique style with a touch of elegance, beautifully encapsulated in our signature style and embroideries.



14334





TEXTILE DEAL



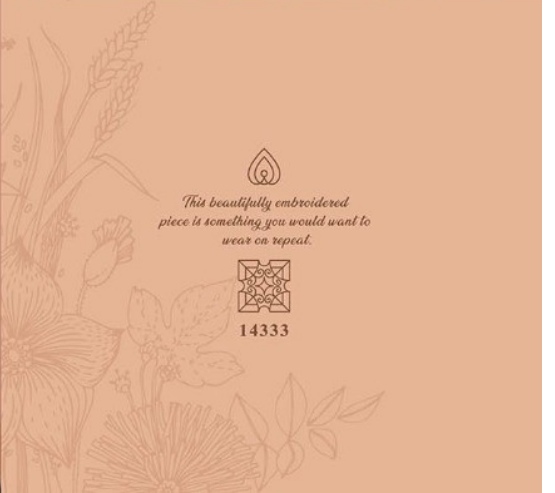
A visual medley of lush fabrics and flawless embroideries, this outfit is crafted for a timeless and elegant expression.



14335



TEXTILE DEAL



This beautifully embroidered piece is something you would want to wear on repeat.



14333




*Radiate magnificence with our
exquisitely crafted outfit, delicately
detailed with threads making it a
stunning statement.*



14336



TEXTILE DEAL



14331



14332



14333



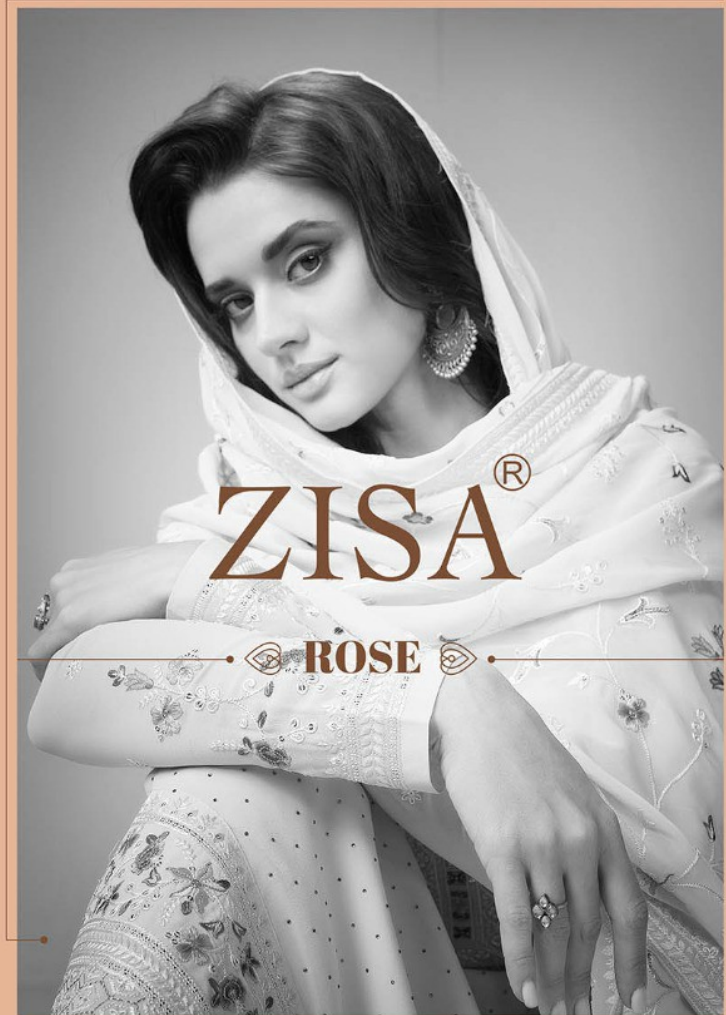
14334



14335



14336



ZISA®

ROSE



TEXTILE DEAL



TEXTILE DEAL



*Celebrate festivities
in this three piece
suit set rendered in happy
hues and tonal
embroidery*



14331

