



TULIP



02

You can't wear hats too much, you have to make it your ally. You must wear what they like and you can't give the real world a good look. An elegant woman is what is in her eye.

Enthralling

The dress must follow the body of a woman, not the body following the shape of the dress.

TEXTILE DEAL

TULIP

04

You can never take too much care over the choice of your shoes. Too many women think that they are unimportant, and for the real proof of an elegant woman is what is on her feet



Beautiful

TEXTILE DEAL



Elegant

The dress must follow the body of a woman, not the body following the shape of the dress.

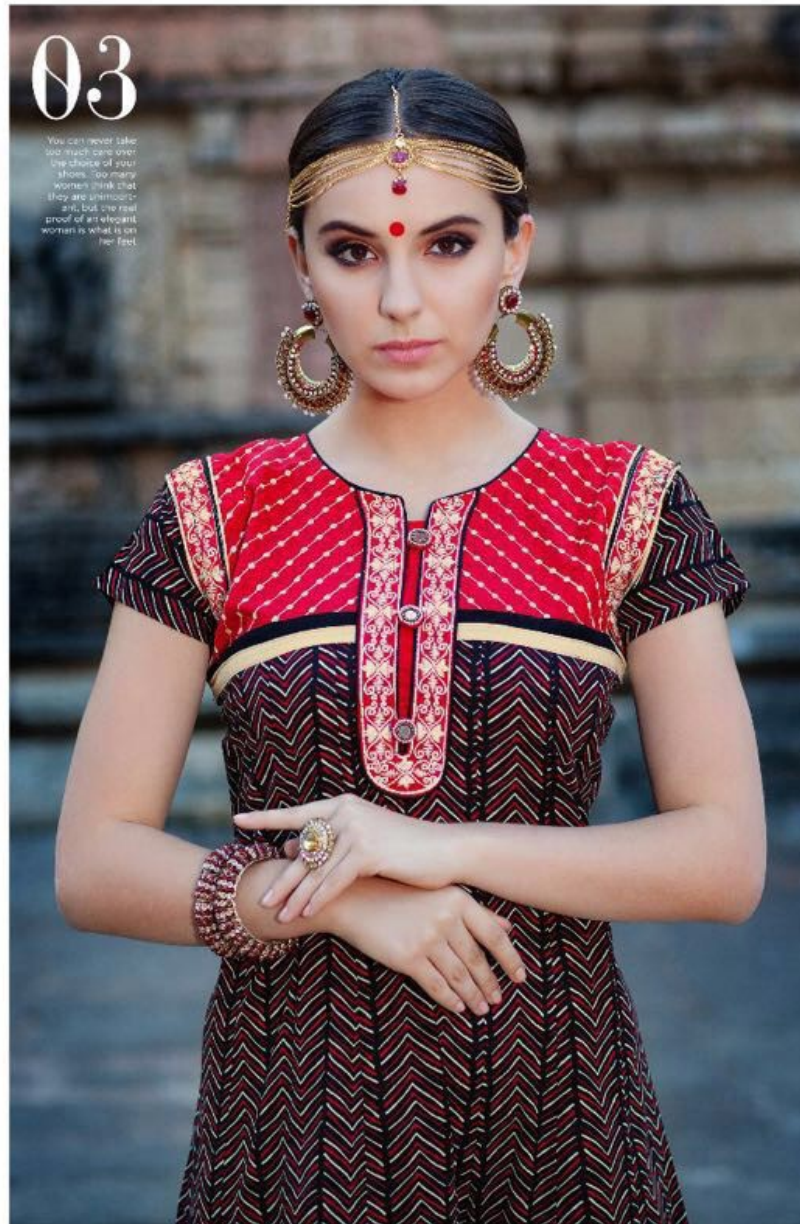


TULIP

TEXTILE DEAL

03

You can never take too much care over the choice of your shoes. Too many women think that they are unimportant, but the real proof of an elegant woman is what is on her feet.





Dazzling

The dress must follow the body of a woman, not the body following the shape of the dress.

01

You can never take too much care over the choice of your shoes. Too many women think that they are unimportant, but the real proof of an elegant woman is what is on her feet.

TEXTILE DEAL

TULIP



may
Right

The dress must follow the body of a woman, not the body following the shape of the dress.

05

You can never take too much care over the choice of your shoes. Too many women think that they are unimportant, etc. But the real proof of an elegant woman is what is on her feet.

TULIP

TEXTILE DEAL



TULIP

Think
Big

The dress must follow the body of a woman, not the body following the shape of the dress.



TEXTILE DEAL



07

You can never have too much gold over your choice of jewelry. Most too many women think that they are all about gold. The real color of a elegant woman is what is on her face.



TULIP

08

You can never take too much care over the choice of your clothes. Too many women think that they are unimportant, but the real proof of an elegant woman is what is on her feet.

TEXTILE DEAL



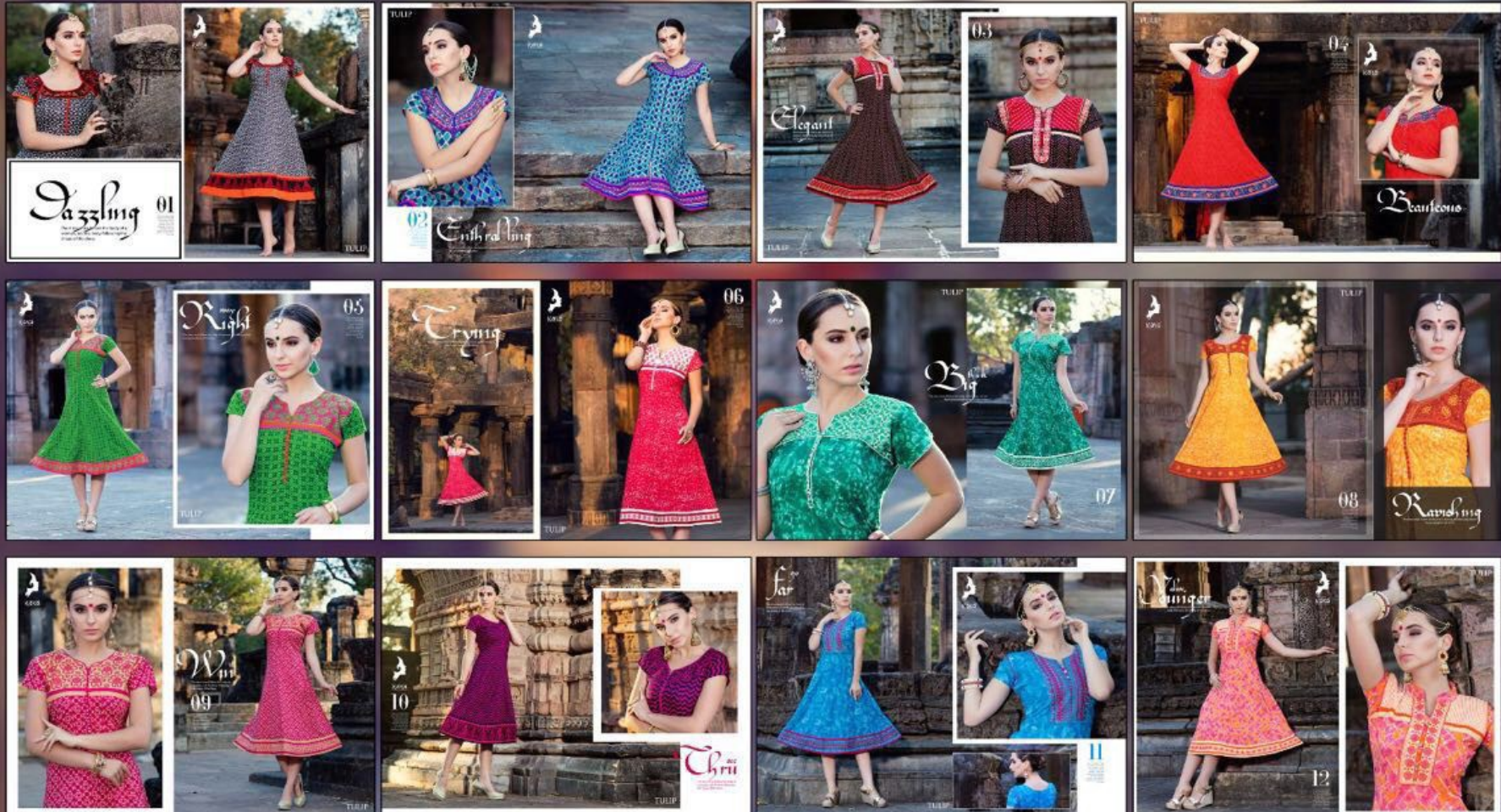
Kavishing
The dress must follow the body of a woman, not the body following the shape of the dress.

TULIP

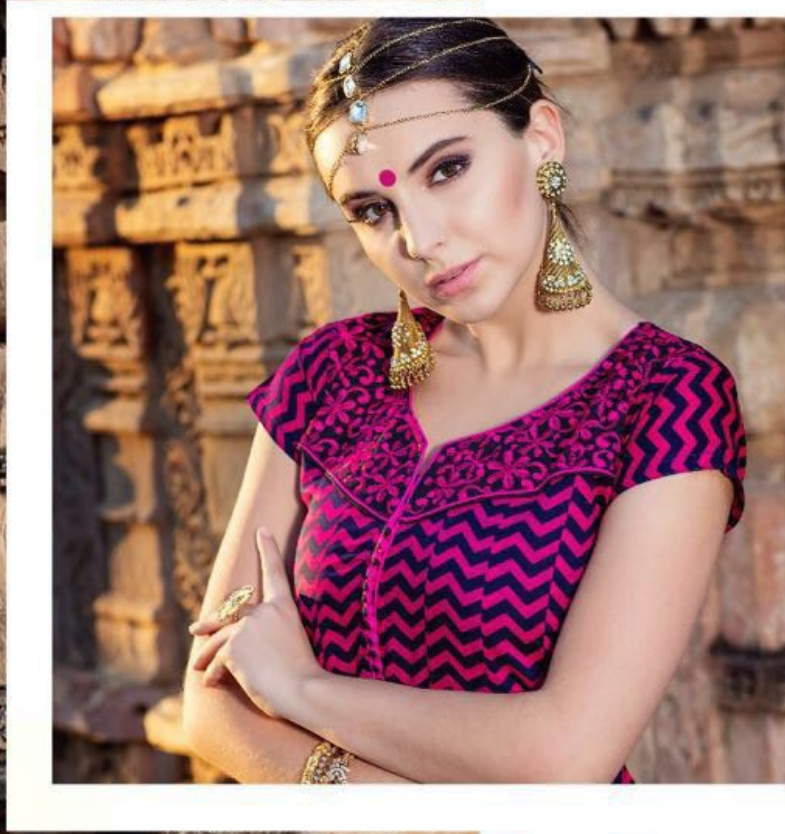
Girls do not dress for boys. They dress for themselves, of course, each other. If girls dressed for boys, they'd just walk around naked at all times.



Kaya™
A VENTURE OF KALASH-INDIA



TEXTILE DEAL



Kava

10

You can never take too much care over the choice of your shoes. Too many women think that they are unimportant, but the real proof of an elegant woman is what is on her feet.

TULIP

TEXTILE DEAL

Chru^{see}

The dress must follow the body of a woman, not the body following the shape of the dress.



TEXTILE DEAL



TEXTILE DEAL



Win it

The dress must follow the body of a woman, not the body following the shape of the dress.

09

You can never take too much care over the choice of your shoes. Too many women think that shoes are accessories, but the real proof of an elegant woman is what is on her feet.

TULIP

Far^{go}

The dress must follow the body of a woman, not the body following the shape of the dress.



11

You can never take too much care over the choice of your sari. Too many women think that they are unimportant. But the real proof of an elegant woman is what is on her feet.

TULIP

TEXTILE DEAL