



SANSKAR®  
TRADITIONAL WEAVING

Hakoba





# THE MODERN WORLD

Designs, textures, colors, the appearance, the fabric, the quality, and the price, all are factors that influence the choice of a saree. The choice of a saree is a reflection of the wearer's personality and her taste. It is a statement of her style and her identity.







*The importance*

Design is contrast to make the atmosphere they have people put on fashion, and people contrast to bring in to design' every piece in the fashion world, designers brought their own contribution will contrast to make it to design, make it more interesting for everyone. It follows to make it as well but excepting any social constraints. This is why it is not considered a rule.



31001



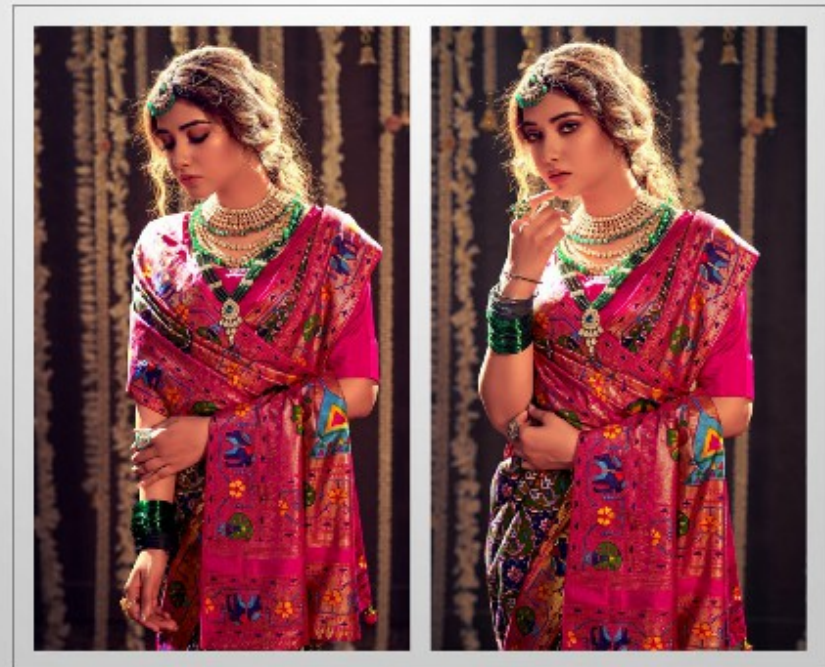




*designer's every move*

Designers continue to take the inspiration they draw people get in fashion and people continue to buy as the designers' every move in the fashion world. The designers long as the world continues to move in its direction and for it to accept for a very long time to come. It is the designer's every move that is the key to the success of the fashion industry.

31002







31003







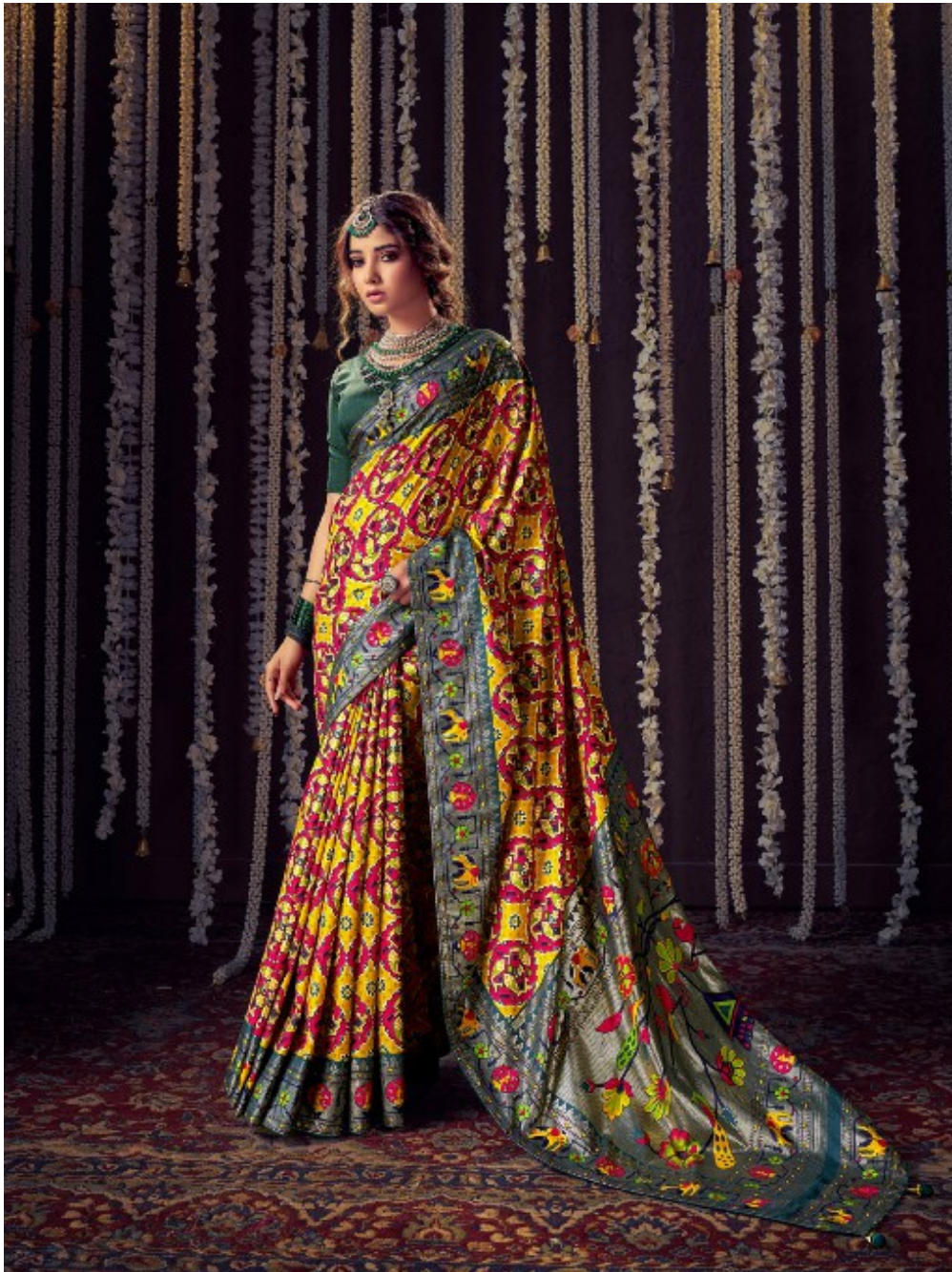
*dominant position*

Designs created to reflect the atmosphere they inspire people put in fashion, and people continue to hang on to designs. Every time in the fashion world, designers launch 4-5 items, but only one or two are able to dominate position, to stay for a very long time. 3D dimensions are what we want, but creating one does not come easy. This is why 3D is done, instead of 2D work.



31004





*designer's every move*

Design continues to take the importance they have people get to follow and people continue to buy and designers' every move in the fashion world, the better to long as the world continues to move in its direction and for in every for a very long time to come. It's the same for all other areas, but every day, we are still here. This is the business and we are still here to work.

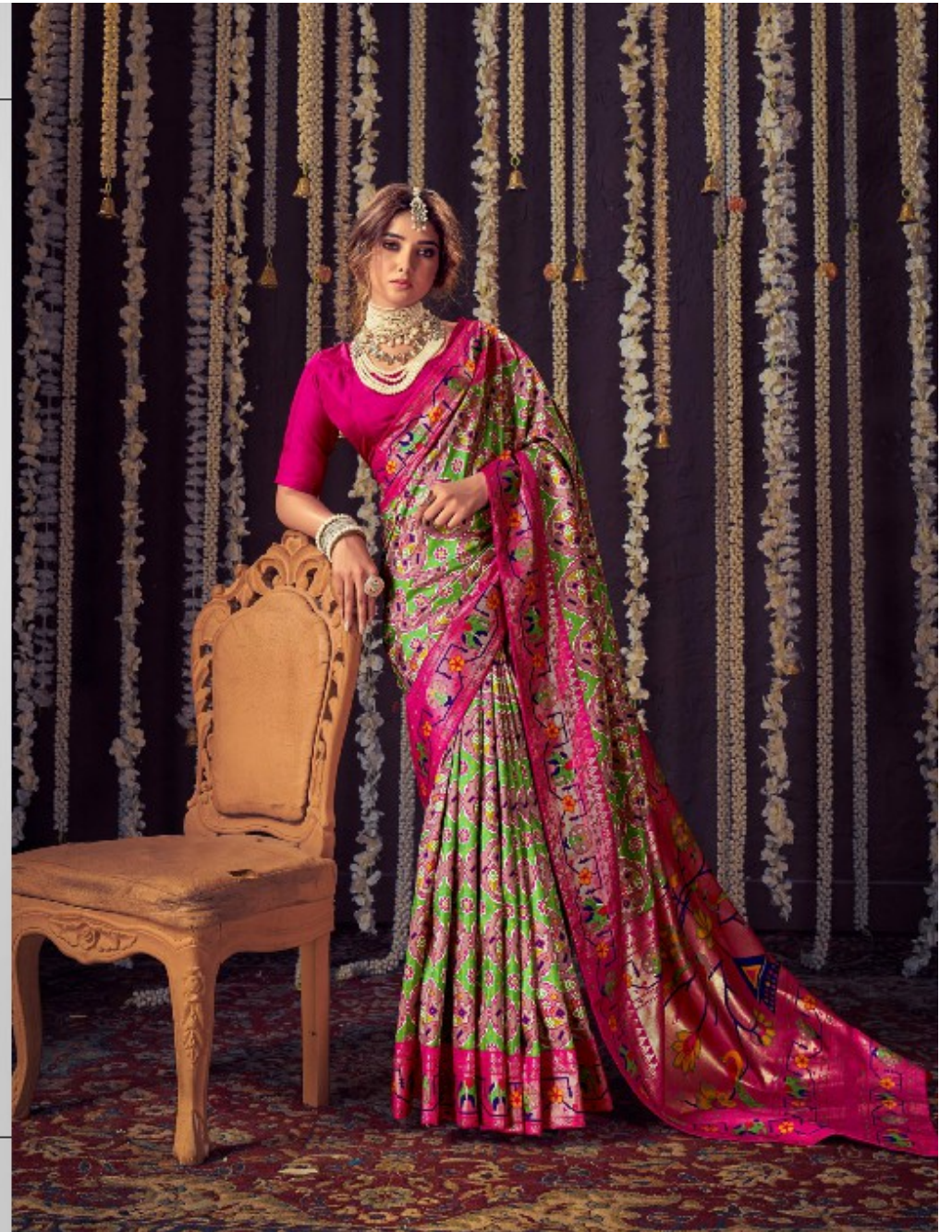
31005







31006





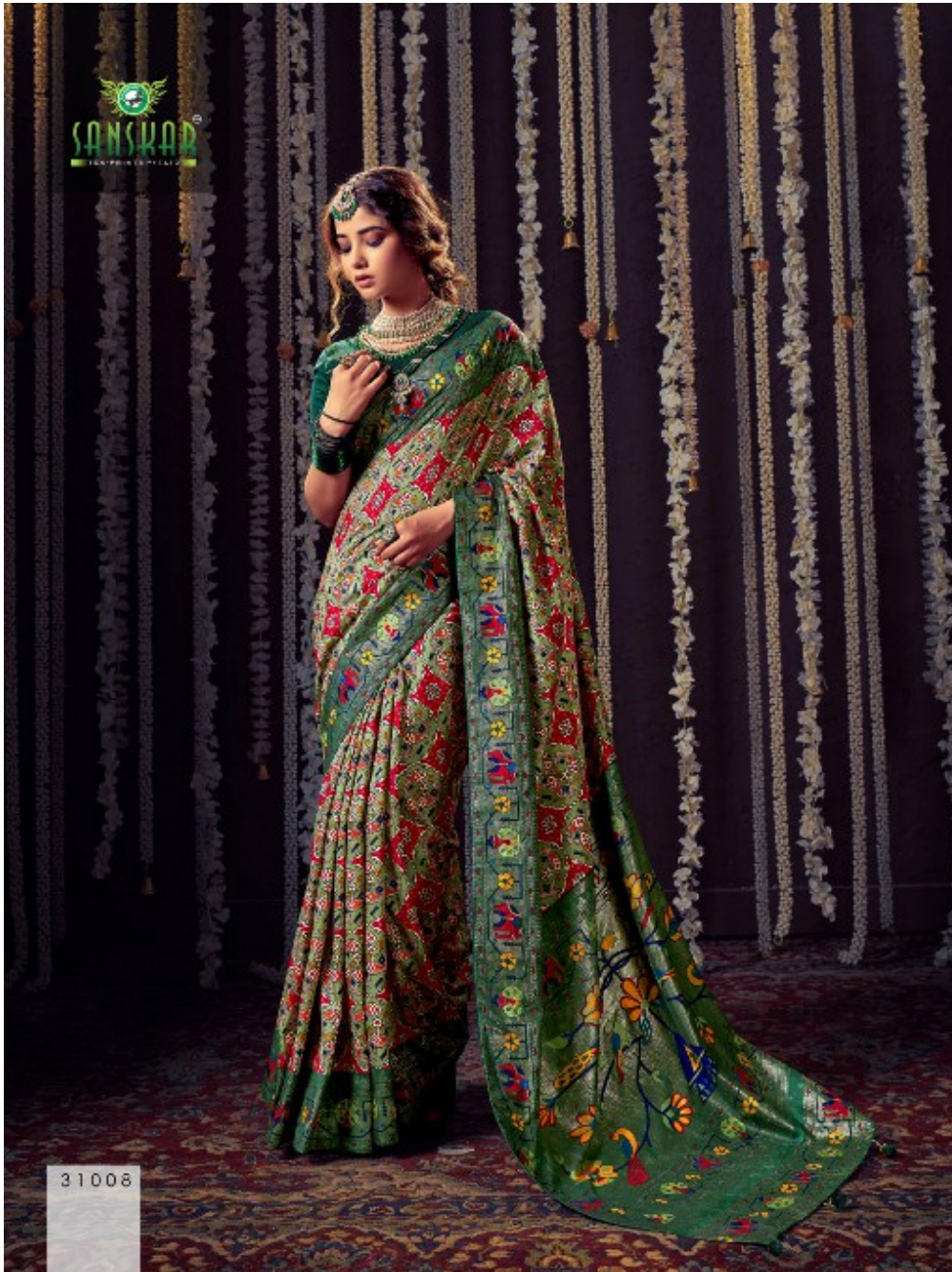


**SANSKAR**  
YOU BELIEVE YOU CAN



31007





31008



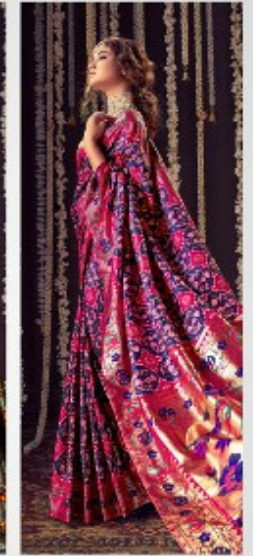
31001



31002



31003



31004



31005



31006



31007



31008