



sheeshmahal®



#S-1320-E

**Top- GEORGETTE**

**Bottom/Inner- SANTOON**

**TEXTILE DEAL**

**WASHING INSTRUCTIONS**

DO NOT USE ANY TYPE OF BLEACH OR STAIN REMOVING CHEMICALS  
BEFORE CUTTING/STITCHING FABRIC SHOULD BE SANDED/BE SANDED IN WATER  
WALL COMPONENTS SEPARATELY FOR 15 MINUTES  
DON'T KEEP NET FABRIC IN TWISTED FROM INSIDER TO AVOID CUP MARKS  
WASH COLORED AND WHITE FABRICS SEPARATELY  
IRON CLOTHES AT MEDIUM TEMPERATURE. IRONING OF FABRIC IN DIRECT SUNLIGHT  
(EXTRA LACES/HANGINGS AND ACCESSORIES ARE NOT INCLUDED)



**S**  
sheeshmahal®

**TOP- GEORGETTE**  
**BOTTOM/INER - SANTOON**  
**DUPATTA - NET**



#S-1320 A

#S-1320 B

#S-1320 C

#S-1320 D

#S-1320 E

#S-1320 F

#S-1320 G

TEXTILE DEAL





sheeshmahal®



#S-1320-B

Top- GEORGETTE  
Bottom / Iner- SANTOON  
TEXTILE DEAL

**WASHING INSTRUCTIONS**  
DO NOT USE ANY TYPE OF BLEACH OR STAIN REMOVING CHEMICALS  
BEFORE CUTTING/STITCHING FABRIC SHOULD BE SOAKED IN WATER  
(ALL COMPONENTS SEPARATELY) FOR 15 MINUTES  
DO NOT KEEP WET FABRIC IN TRUSTED FOLD IN ORDER TO AVOID CLIP MARKS  
WASH COLOURED AND WHITE FABRICS SEPARATELY  
IRON CLOVES AT MODERATE TEMPERATURE DO NOT DRY FABRIC IN DIRECT SUNLIGHT  
(EXTRA LACES/HANGINGS AND ACCESSORIES ARE NOT INCLUDED)



S

sheeshmahal®



#S-1320-D

Top- GEORGETTE  
Bottom / Iner- SANTOON  
TEXTILE DEAL

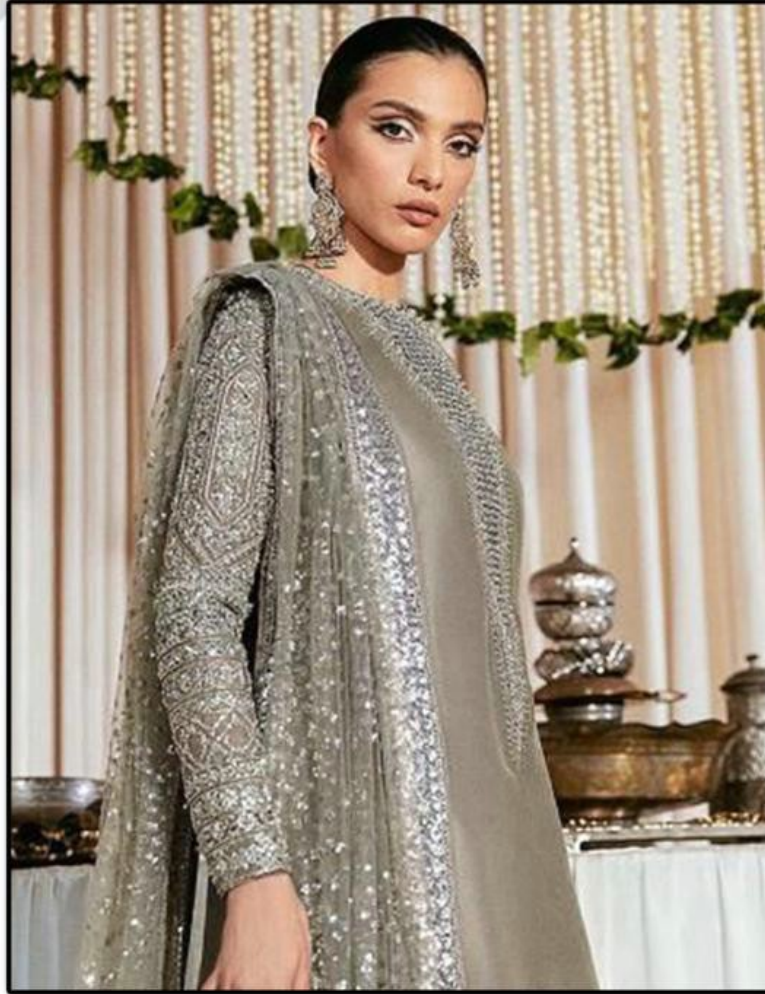
**WASHING INSTRUCTIONS**

DO NOT USE ANY TYPE OF BLEACH OR STAIN REMOVING CHEMICALS  
BEFORE CUTTING/STITCHING FABRIC SHOULD BE SOAKED IN WATER  
(ALL COMPONENTS SEPARATELY) FOR 15 MINUTES  
DO NOT KEEP WET FABRIC IN TRUSTED FOLD IN ORDER TO AVOID CUP MARKS  
WASH COLOURED AND WHITE FABRICS SEPARATELY  
IRON CLOTHES AT MODERATE TEMPERATURE DO NOT DRY FABRIC IN DIRECT SUNLIGHT  
(EXTRA LACES/HANGINGS AND ACCESSORIES ARE NOT INCLUDED)



S

sheeshmahal®



#S-1320-A

Top- GEORGETTE  
Bottom / Iner. SANTOON  
TEXTILE DEAL

WASHING INSTRUCTIONS

DO NOT USE ANY TYPE OF BLEACH OR STAIN REMOVING CHEMICALS  
BEFORE CUTTING/STITCHING FABRIC SHOULD BE SOAKED IN WATER  
(ALL COMPONENTS SEPARATELY) FOR 15 MINUTES  
DO NOT KEEP WET FABRIC IN TUNDRY FOR HOURS TO AVOID CLIP MARKS  
WASH COLOURED AND WHITE FABRICS SEPARATELY  
IRON CLOTHES AT MAXIMUM TEMPERATURE DO NOT IRON FABRIC IN DIRECT SUNLIGHT  
(EXTRA LACES/HANGINGS AND ACCESSORIES ARE NOT INCLUDED)



S

sheeshmahal®



#S-1320-G

Top- GEORGETTE

Bottom / Iner. SANTOON

TEXTILE DEAL

WASHING INSTRUCTIONS

DO NOT USE ANY TYPE OF BLEACH OR STAIN REMOVING CHEMICALS  
BEFORE CUTTING/STITCHING FABRIC SHOULD BE SOAKED/SCUMED IN WATER  
(ALL COMPONENTS SEPARATELY) FOR 15 MINUTES  
DO NOT KEEP WET FABRIC IN TRUSTED FROM INORDER TO AVOID CUP MARKS  
WASH COLOURED AND WHITE FABRICS SEPARATELY  
IRON CLOVES AT MEDIUM TEMPERATURE DO NOT DRY FABRIC IN DIRECT SUNLIGHT  
(EXTRA LACES/HANGINGS AND ACCESSORIES ARE NOT INCLUDED)



S

sheeshmahal®



#S-1320-E

Top- GEORGETTE  
Bottom / Iner- SANTOON  
TEXTILE DEAL

WASHING INSTRUCTIONS

DO NOT USE ANY TYPE OF BLEACH OR STAIN REMOVING CHEMICALS  
BEFORE CUTTING/STITCHING FABRIC SHOULD BE SOAKED/BE SOAKED IN WATER  
(ALL COMPONENTS SEPARATELY) FOR 15 MINUTES  
DO NOT KEEP WET FABRIC IN TRUSTED/IRON IN ORDER TO AVOID CUP MARKS  
WASH COLOURED AND WHITE FABRICS SEPARATELY  
IRON CLOVES AT MODERATE TEMPERATURE DO NOT DRY FABRIC IN DIRECT SUNLIGHT  
(EXTRA LACES/HANGINGS AND ACCESSORIES ARE NOT INCLUDED)





sheeshmahal®

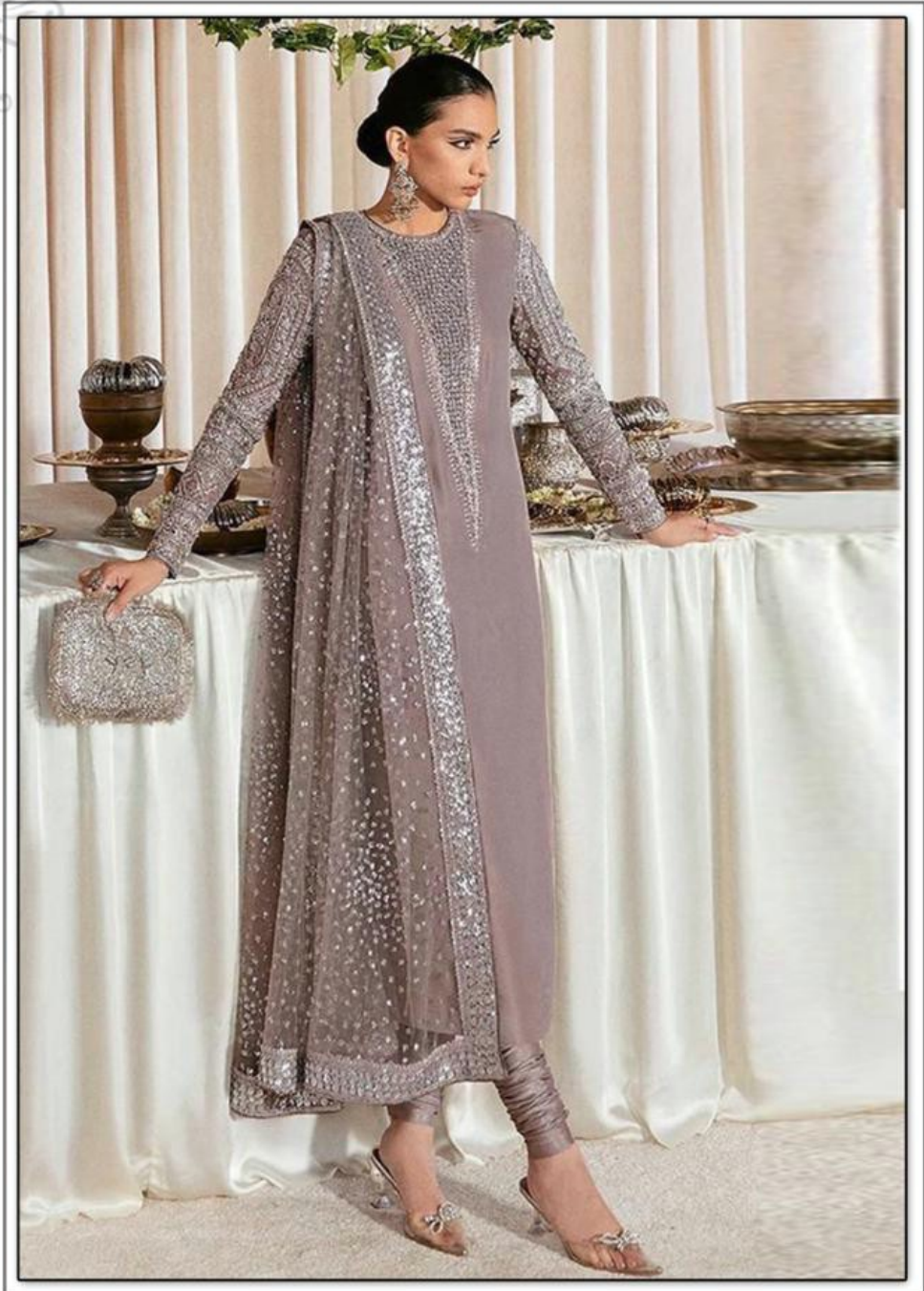


#S-1320-C

Top- **GEORGETTE**  
Bottom / Iner- **SANTOON**  
**TEXTILE DEAL**

**WASHING INSTRUCTIONS**

DO NOT USE ANY TYPE OF BLEACH OR STAIN REMOVING CHEMICALS  
BEFORE CUTTING/STITCHING FABRIC SHOULD BE SOAKED IN WATER  
(ALL COMPONENTS SEPARATELY) FOR 15 MINUTES  
DO NOT KEEP WET FABRIC IN TRUSTED FOLD IN ORDER TO AVOID CUP MARKS  
WASH COLOURED AND WHITE FABRICS SEPARATELY  
IRON CLOTHES AT MODERATE TEMPERATURE DO NOT DRY FABRIC IN DIRECT SUNLIGHT  
(EXTRA LACES/HANGINGS AND ACCESSORIES ARE NOT INCLUDED)





S

sheeshmahal®



#S-1320-F

Top- GEORGETTE

Bottom / Iner. SANTOON

TEXTILE DEAL

**WASHING INSTRUCTIONS**

DO NOT USE ANY TYPE OF BLEACH OR STAIN REMOVING CHEMICALS  
BEFORE CUTTING/STITCHING FABRIC SHOULD BE SOAKED/BE SCAMED IN WATER  
(ALL COMPONENTS SEPARATELY) FOR 15 MINUTES  
DO NOT KEEP WET FABRIC IN TRUSTED FROM INK/STAIN TO AVOID CUP MARKS  
WASH COLOURED AND WHITE FABRICS SEPARATELY  
IRON CLOTHES AT MODERATE TEMPERATURE DO NOT DRY FABRIC IN DIRECT SUNLIGHT  
(EXTRA LACES/HANGINGS AND ACCESSORIES ARE NOT INCLUDED)

