

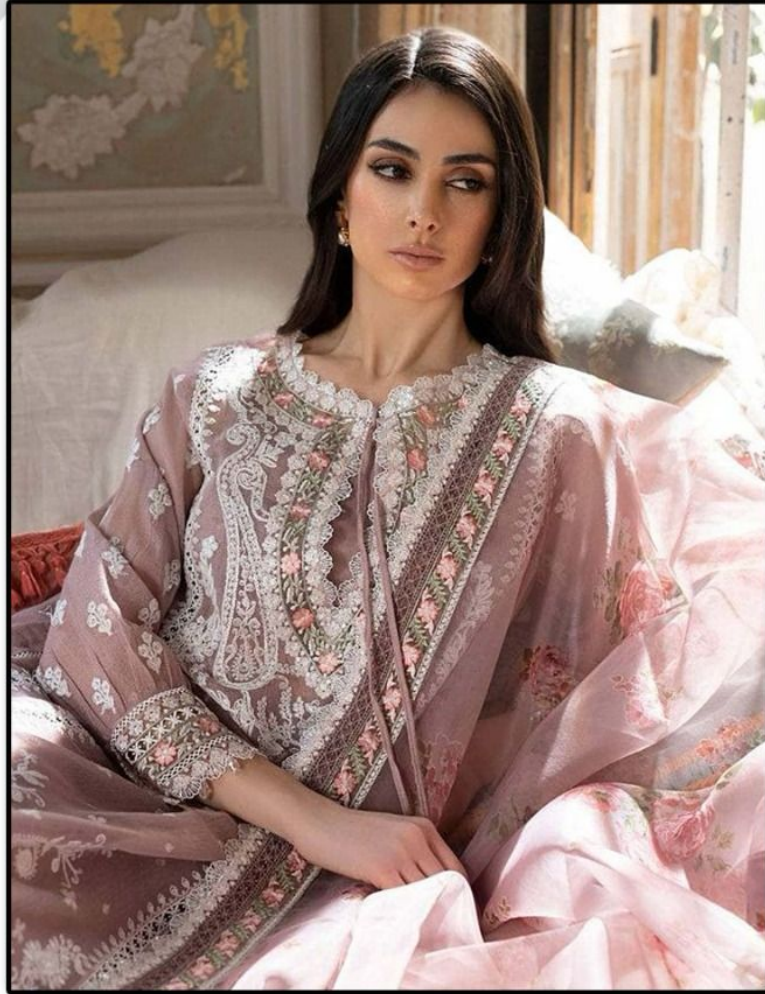
sheeshmahal®



#S-12052 C



sheeshmahal®



#S-12052 B

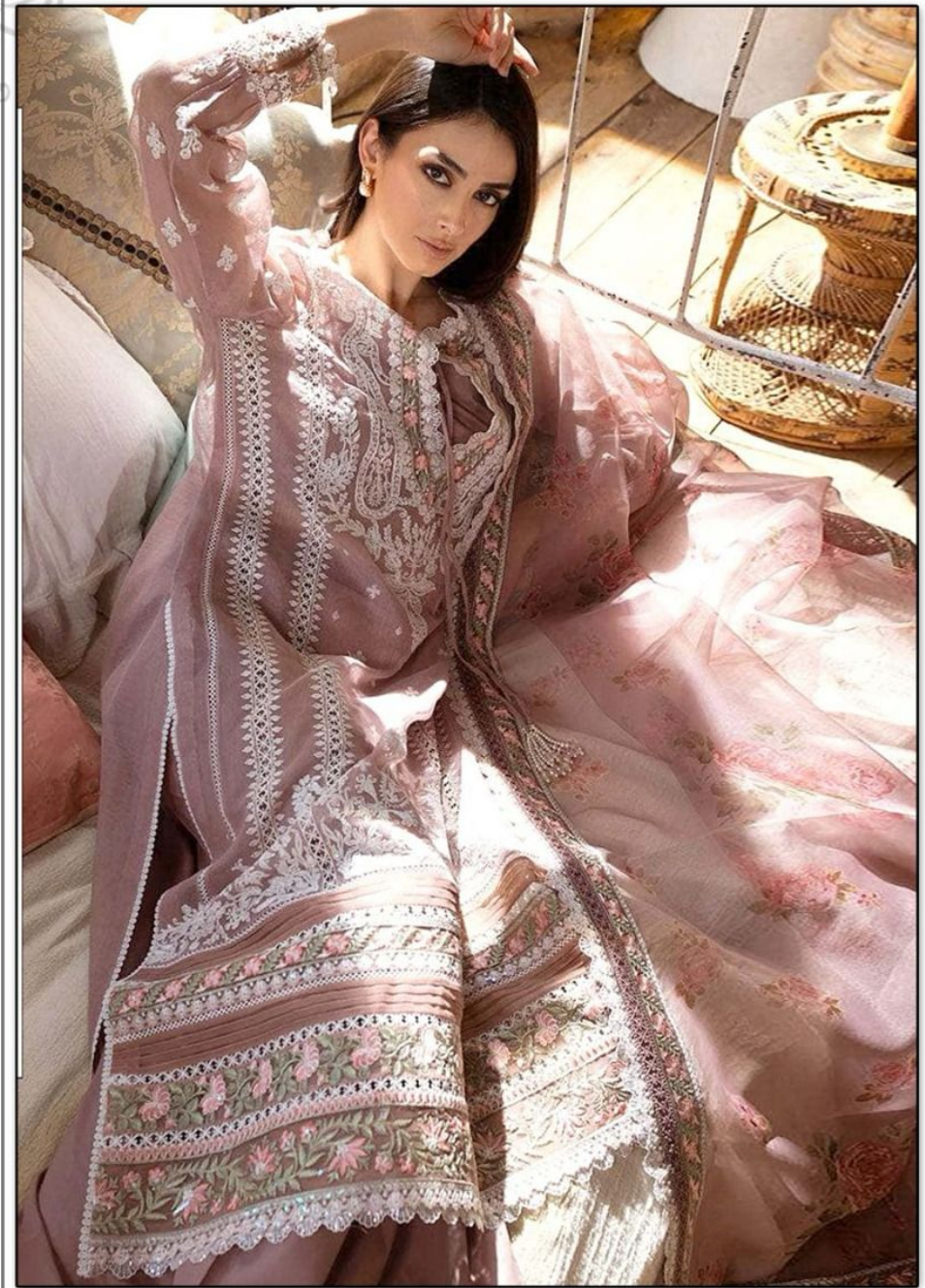
Top- POLYESTER COTTON

Bottom/Iner- POLYESTER COTTON

Dupatta- DIGITAL ORGANZA

WASHING INSTRUCTIONS

DO NOT USE ANY TYPE OF BLEACH OR STAIN REMOVING CHEMICALS
BEFORE CUTTING/STITCHING FABRIC SHOULD BE SOAKED/BE SOAKED IN WATER
(ALL COMPONENTS SEPARATELY) FOR 15 MINUTES
DO NOT KEEP WET FABRIC IN TWISTED FORM IN ORDER TO AVOID CLIP MARKS
WASH COLOURED AND WHITE FABRICS SEPARATELY
IRON CLOTHES AT MEDIUM TEMPERATURE. DO NOT DRY FABRIC IN DIRECT SUNLIGHT
(EXTRA LACES/HANGINGS AND ACCESSORIES ARE NOT INCLUDED)





sheeshmahal®



#S-12052 C

Top- POLYESTER COTTON

Bottom/Iner- POLYESTER COTTON

Dupatta- DIGITAL ORGANZA

WASHING INSTRUCTIONS

DO NOT USE ANY TYPE OF BLEACH OR STAIN REMOVING CHEMICALS
BEFORE CUTTING/STITCHING FABRIC SHOULD BE SOAKED IN WATER
(ALL COMPONENTS SEPARATELY) FOR 15 MINUTES
DO NOT KEEP WET FABRIC IN TWISTED FORM IN ORDER TO AVOID CLIP MARKS
WASH COLOURED AND WHITE FABRICS SEPARATELY
IRON CLOTHES AT MEDIUM TEMPERATURE. DO NOT DRY FABRIC IN DIRECT SUNLIGHT
(EXTRA LACES/HANGINGS AND ACCESSORIES ARE NOT INCLUDED)





sheeshmahal®



#S-12052 A

Top- POLYESTER COTTON

Bottom/Iner- POLYESTER COTTON

Dupatta- DIGITAL ORGANZA

WASHING INSTRUCTIONS

DO NOT USE ANY TYPE OF BLEACH OR STAIN REMOVING CHEMICALS
BEFORE CUTTING/STITCHING FABRIC SHOULD BE SOAKED IN WATER
(ALL COMPONENTS SEPARATELY) FOR 15 MINUTES
DO NOT KEEP WET FABRIC IN TWISTED FORM IN ORDER TO AVOID CLIP MARKS!
WASH COLOURED AND WHITE FABRICS SEPARATELY
IRON CLOTHES AT MODERATE TEMPERATURE. DO NOT DRY FABRIC IN DIRECT SUNLIGHT
(EXTRA LACES/HANGINGS AND ACCESSORIES ARE NOT INCLUDED)

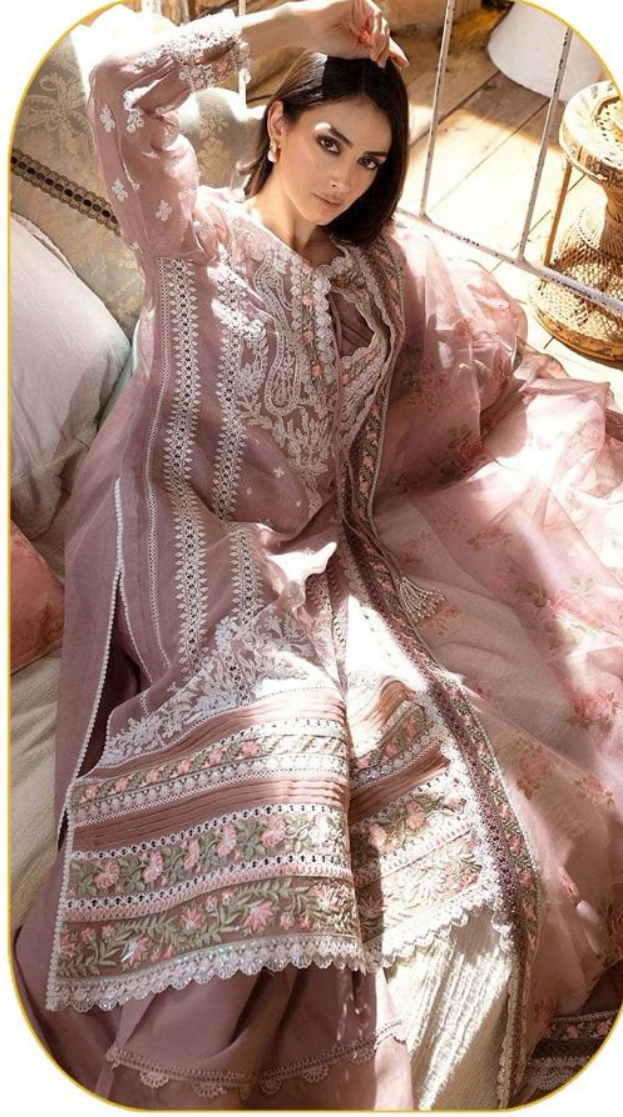


S
sheeshmahal®

Top- POLYESTER COTTON
Bottom/Iner- POLYESTER COTTON
Dupatta- DIGITAL ORGANZA



#S-12052 A



#S-12052 B



#S-12052 C