

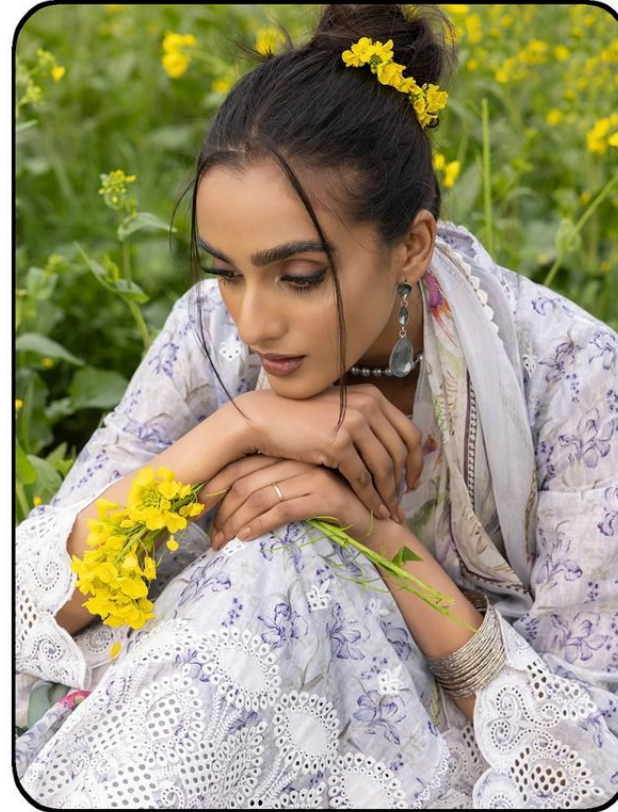


**RINAZ<sup>®</sup>**  
FASHION  
**D.NO-505**



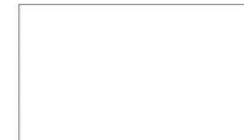
**ADANLIBAS**  
VOL-5

TOP - CAMRIC COTTON  
BOTTON - PURE COTTON  
DUPATTA - MULL COTTON/  
SILVER SHIFON



**WASHING INSTRUCTIONS**

DO NOT USE ANY TYPE OF BLEACH OR STAIN REMOVING CHEMICALS  
BEFORE CUTTING / STITCHING. FABRIC SHOULD BE SOAKED IN WATER  
(ALL COMPONENTS SEPARATELY ) FOR 15 MINUTES  
DO NOT KEEP WET FABRIC IN TWISTED FROM IN ORDER TO AVOID COPY MKRS !  
WASH COLOURED AND WHITE FABRICS SEPARATELY  
IRON CLOTHES AT MODERATE TEMPERATURE ! DO NOT DRY FABRIC IN DIRECT SUNLIGHT  
( EXTRA LACES , HANGING AND ACCESSORIES ARE NOT INDUDED)







# ADANLIBAS

VOL-5







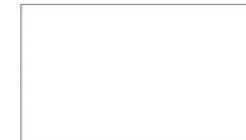
**ADANLIBAS**  
VOL-5

TOP - CAMRIC COTTON  
BOTTON - PURE COTTON  
DUPATTA - MULL COTTON/  
SILVER SHIFON



**WASHING INSTRUCTIONS**

DO NOT USE ANY TYPE OF BLEACH OR STAIN REMOVING CHEMICALS  
BEFORE CUTTING / STITCHING. FABRIC SHOULD BE SOAKED IN WATER  
(ALL COMPONENTS SEPARATELY ) FOR 15 MINUTES  
DO NOT KEEP WET FABRIC IN TWISTED FROM IN ORDER TO AVOID COPY MKRS !  
WASH COLOURED AND WHITE FABRICS SEPARATELY  
IRON CLOTHES AT MODERATE TEMPERATURE ! DO NOT DRY FABRIC IN DIRECT SUNLIGHT  
( EXTRA LACES , HANGING AND ACCESSORIES ARE NOT INDUED)







# REFRESH YOUR LOOKS ANYTIME

EXPEREMENTAION THAT OFFERS HUE POPS

**RINAZ**<sup>®</sup>  
FASHION







**RINAZ**<sup>®</sup>  
FASHION  
D.NO-501

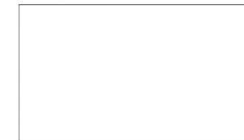
**ADANLIBAS**  
VOL-5

TOP - CAMRIC COTTON  
BOTTON - PURE COTTON  
DUPATTA - MULL COTTON/  
SILVER SHIFON



**WASHING INSTRUCTIONS**

DO NOT USE ANY TYPE OF BLEACH OR STAIN REMOVING CHEMICALS  
BEFORE CUTTING / STITCHING. FABRIC SHOULD BE SOAKED IN WATER  
(ALL COMPONENTS SEPARATELY ) FOR 15 MINUTES  
DO NOT KEEP WET FABRIC IN TWISTED FROM IN ORDER TO AVOID COPY MARKS !  
WASH COLOURED AND WHITE FABRICS SEPARATELY  
IRON CLOTHES AT MODERATE TEMPERATURE ! DO NOT DRY FABRIC IN DIRECT SUNLIGHT  
( EXTRA LACES , HANGING AND ACCESSORIES ARE NOT INDUDED)







**RINAZ**<sup>®</sup>  
FASHION  
D.NO-504



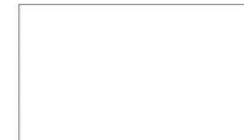
**ADANLIBAS**  
VOL-5

TOP - CAMRIC COTTON  
BOTTON - PURE COTTON  
DUPATTA - MULL COTTON/  
SILVER SHIFON



**WASHING INSTRUCTIONS**

DO NOT USE ANY TYPE OF BLEACH OR STAIN REMOVING CHEMICALS  
BEFORE CUTTING / STITCHING. FABRIC SHOULD BE SOAKED IN WATER  
(ALL COMPONENTS SEPARATELY ) FOR 15 MINUTES  
DO NOT KEEP WET FABRIC IN TWISTED FROM IN ORDER TO AVOID COPY MKRS !  
WASH COLOURED AND WHITE FABRICS SEPARATELY  
IRON CLOTHES AT MODERATE TEMPERATURE ! DO NOT DRY FABRIC IN DIRECT SUNLIGHT  
( EXTRA LACES , HANGING AND ACCESSORIES ARE NOT INDUDED)







**RINAZ<sup>®</sup>**  
FASHION  
D.NO-502



**ADANLIBAS**  
VOL-5

TOP - CAMRIC COTTON  
BOTTON - PURE COTTON  
DUPATTA - MULL COTTON/  
SILVER SHIFON



**WASHING INSTRUCTIONS**

DO NOT USE ANY TYPE OF BLEACH OR STAIN REMOVING CHEMICALS  
BEFORE CUTTING / STITCHING. FABRIC SHOULD BE SOAKED IN WATER  
(ALL COMPONENTS SEPARATELY) FOR 15 MINUTES  
DO NOT KEEP WET FABRIC IN TWISTED FORM IN ORDER TO AVOID COPY MARKS !  
WASH COLOURED AND WHITE FABRICS SEPARATELY  
IRON CLOTHES AT MODERATE TEMPERATURE ! DO NOT DRY FABRIC IN DIRECT SUNLIGHT  
( EXTRA LACES , HANGING AND ACCESSORIES ARE NOT INDUDED)







D.NO-501



D.NO-502



D.NO-503



D.NO-504



D.NO-505

