



SAYURI<sup>®</sup>  
Designer

*Bunaai*





  
SAYURI<sup>®</sup>  
Designer  
*Bunaai*

SAYURI<sup>®</sup>  
Designer



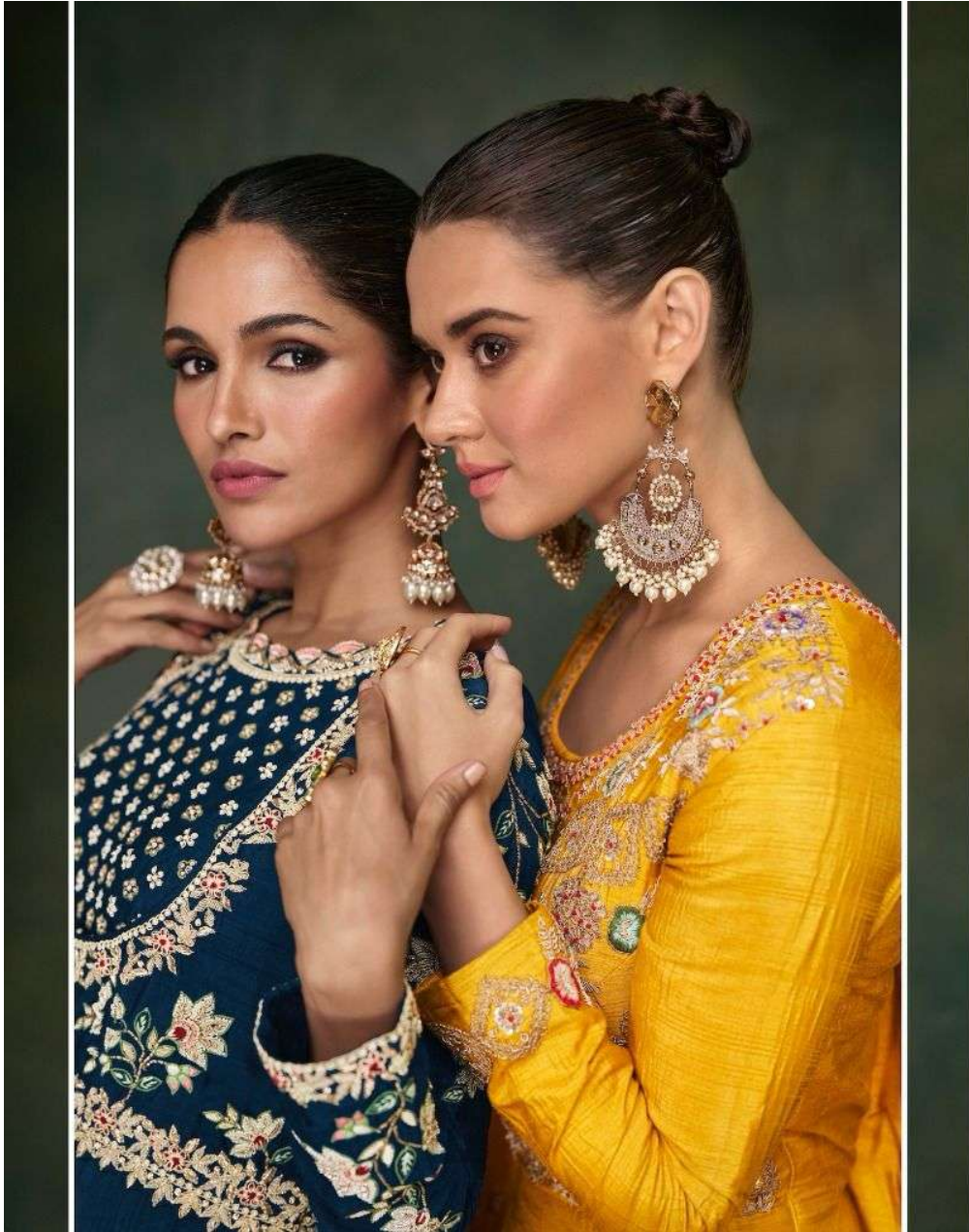
5326



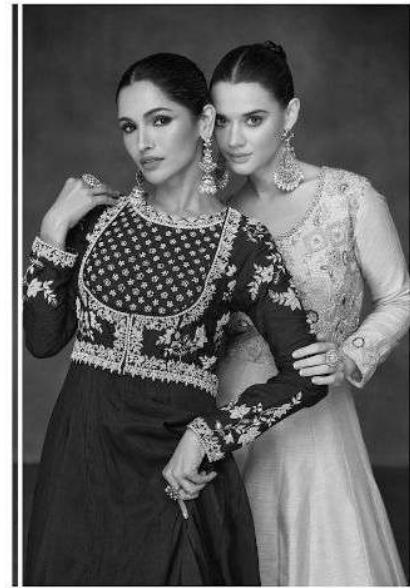


5326





SAYURI®  
Designer



*The key is to contrast two elements so you don't end up over  
doing the feminine quotient*

SAYURI®  
Designer



5327



SAYURI<sup>®</sup>  
Designer



5328

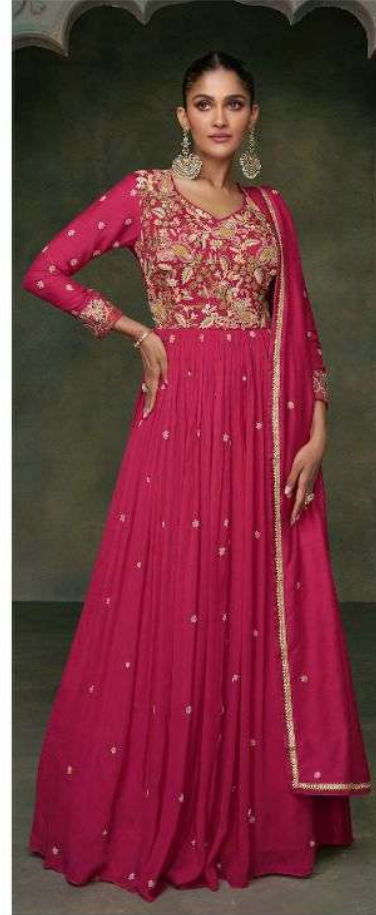




5326



5327



5328

  
SAYURI®  
Designer  
*Bunaai*