



VELVET  
READYMADE COLLECTION





**VELVET**  
READYMADE COLLECTION



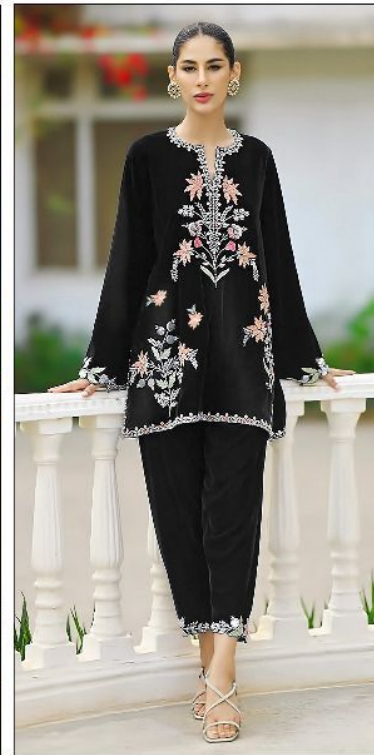
**R-1182**



**R-1182-B**



**R-1182-C**



**R-1182-D**







VELVET  
READYMADE COLLECTION





R-1182-C

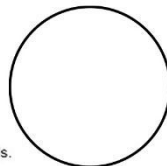


READY MADE  
COLLECTION

Care Instructions



- >Dry clean recommended
- >Do not use anytype of bleach or stain removing chemicals.
- >Do not overexpose damp fabrics to strong sunlight.
- >Iron at moderate temperature.







R-1182-B

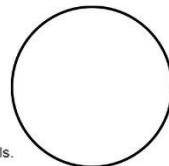


**VELVET**  
READYMADE COLLECTION

Care Instructions



- >Dry clean recommended
- >Do not use anytype of bleach or stain removing chemicals.
- >Do not overexpose damp fabrics to strong sunlight.
- >Iron at moderate temperature.





R-1182

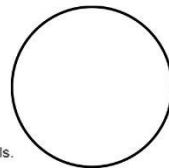


**VELVET**  
READYMADE COLLECTION

Care Instructions



- >Dry clean recommended
- >Do not use anytype of bleach or stain removing chemicals.
- >Do not overexpose damp fabrics to strong sunlight.
- >Iron at moderate temperature.







R-1182-D



**VELVET**  
READYMADE COLLECTION

Care Instructions



- >Dry clean recommended
- >Do not use anytype of bleach or stain removing chemicals.
- >Do not overexpose damp fabrics to strong sunlight.
- >Iron at moderate temperature.

