



MOHMANTHAN™



MAHOTSAV  
GROUP

*Majestica*



The image features two women standing side-by-side against a background of large, stylized, light blue and white floral patterns. The woman on the left is wearing a dark green saree with intricate floral embroidery in shades of teal and gold. The woman on the right is wearing a maroon saree with elaborate silver and gold floral embroidery. Both women are wearing jewelry, including earrings, necklaces, and rings. The overall aesthetic is elegant and sophisticated.

## Draped in Tandem: Dual Sophistication Unveiled

Hold the dual essence of fashion and style, blending elegance with charm, and sophistication with vibrant allure.



*Real* **Growth**  
*IS Being More of Yourself*

Fusing essence with earthy hues, it's an enduring charm.







A SIGN

# Fashion

Tell a story with style and its evolving journey in fashion with red.



FABRIC: CREPE SILK GEORGETTE





MOHMANTHAN™



MAHOTSAV  
GROUP

# Majestica

Unveiling the Inner  
*Majesty of Women.*

Welcome to 'Majestica', where the essence of fashion is woven with threads of emotion and grace. In the realm of ethnic wear, women embody a unique majesty, a regal beauty that transcends time. Our catalog is a testament to this regality, a tribute to the elegant stories that every lady carries with her, etching her journey in the world of style.

Under the brand of Mohmanthan, this catalog, in every intricate design, every vibrant hue, we find the echoes of a woman's emotions, her cultural heritage, and her innate charm.

'Majestica' is a celebration of this inner majesty, a reflection of the strength, the grace, and the enduring beauty that defines her essence. Thus, 'Majestica' is not just a catalog; it's a journey into the majestic world of women's ethnic wear, where stories are spun, and beauty reigns supreme.







THE SERENE  
AURA OF WINE  
AND PURPLE  
RADIATES A  
COMMANDING  
STYLE.



FABRIC: CREPE SATIN SILK



The art of capturing the soul  
in radiant crepe satin silk

With fervent vibrancy, this saree leads us on a captivating voyage.



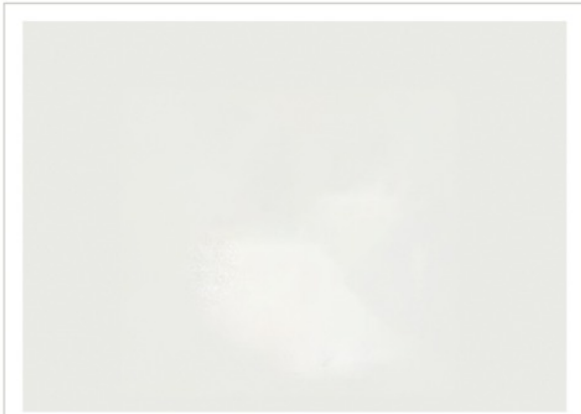
FASHIONS FADE, STYLE IS ETERNAL  
23510

FABRIC: CREPE SATIN SILK



FASHIONS FADE, STYLE IS ETERNAL  
23571

FABRIC: BANARASI CRUSH SILK



*A soft rephraser  
of whispering dawn*

Intricate drapes ignite a graceful dance of allure and deep emotions.







Elegant in its hues, this saree tells a tale of her ever-evolving beauty.



FABRIC: BANARASI CRUSH SILK





*Discovering majestic*  
charm in the red

Join the timeless craftsmanship and style evolution with the red.



FASHIONS FADE, STYLE IS ETERNAL  
23512

FABRIC: CREPE SILK GEORGETTE



*A Symphony in*  
Light of Palettes



NARRATE  
YOUR STYLE  
WITH CAPTI-  
VATING  
FASHION.

FASHIONS FADE, STYLE IS ETERNAL.  
23513

FABRIC: CREPE SATIN SILK



women make fashion

# Culture

FABRIC: CREPE SATIN SILK



FABRIC: CREPE SATIN SILK



# Elegante

Beauty



ENTWINED  
STYLE CELE-  
BRATES  
WOMEN'S  
GRACE IN  
YOUR  
EVOLVING  
RULES.

FASHIONS FADE, STYLE IS ETERNAL.  
23513

FABRIC: CREPE SATIN SILK





Bask In Effulgent  
*Glamour Embrace*  
Effortless Elegance



THIS SAREE  
DEFINES  
WOMAN'S  
CHARM WITH  
CAPTIVATING  
ALLURE.

FASHIONS FADE, STYLE IS ETERNAL  
23514

FABRIC: CREPE SATIN SILK



Adorn yourself with a  
*testament to regal grace.*



WITHIN  
STYLE'S  
FOLDS, THE  
SAREE TELLS  
A WOMAN'S  
BEAUTY  
STORY,  
PAINTING  
CHARM.



FASHIONS MADE, STYLE IS ETERNAL  
23515



FABRIC: CREPE SATIN SILK



Shining Blue



A perfect wardrobe choice, where grace meets fashion, a feminist statement.



*Your Style's Refined Melody.*



FASHIONS MADE, STYLE IS ETERNAL  
23516

FABRIC: CREPE SATIN SILK



Be a Show Stopper  
in *Delicate Hues*



These beautiful drapes shine not just with design but also with intricate smiles.



FASHION IS ETERNAL  
23517

FABRIC: TUSSER SILK



*Gone with the shining blue,  
a shade just made for you*



BLEND YOUR  
PERSONA FOR  
A HARMONI-  
OUS POR-  
TRAYAL OF  
INNATE  
CHARM.



FASHIONS FADE, STYLE IS ETERNAL  
23518

FABRIC: CREPE SATIN SILK



*The fervent allure of  
rich brown shades.*



Fabric and elegance fuse, leaving a lasting impression in your style.



FASHION'S FADE, STYLE IS ETERNAL.  
23519

FABRIC: TWO TONE GEORGETTE SILK





**FABRIC: PURE CREPE GEORGETTE**

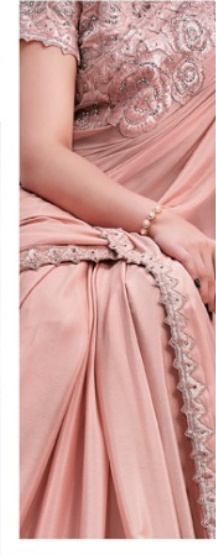
In this saree, fusion of style and impression leaves a lasting mark.





*When Style Meets Impression:*  
A Beautiful Fusion.

Step into a world where style and impression fuse beauty harmoniously.



FASHIONS FADE, STYLE IS ETERNAL  
23520

FABRIC: PURE CREPE GEORGETTE



PRETTY  
*Powerfull*

Change the format, enter, and compete in a new sphere.

FABRIC: NET ORGANZA GEORGETTE



With every fashion change,  
*you raise the bar*



YOUR MOVES  
CONVEY A  
SECRET, CELE-  
BRATING  
INNATE GRACE  
AND BEAUTY.

FASHIONS FADE, STYLE IS ETERNAL  
23521

FABRIC: NET ORGANZA GEORGETTE



WEAVING A  
TALE OF  
ARTISTRY, A  
TOUCH OF  
OPULENCE TO  
TIMELESS  
ELEGANCE.



*It's her style's  
turn to shine now*

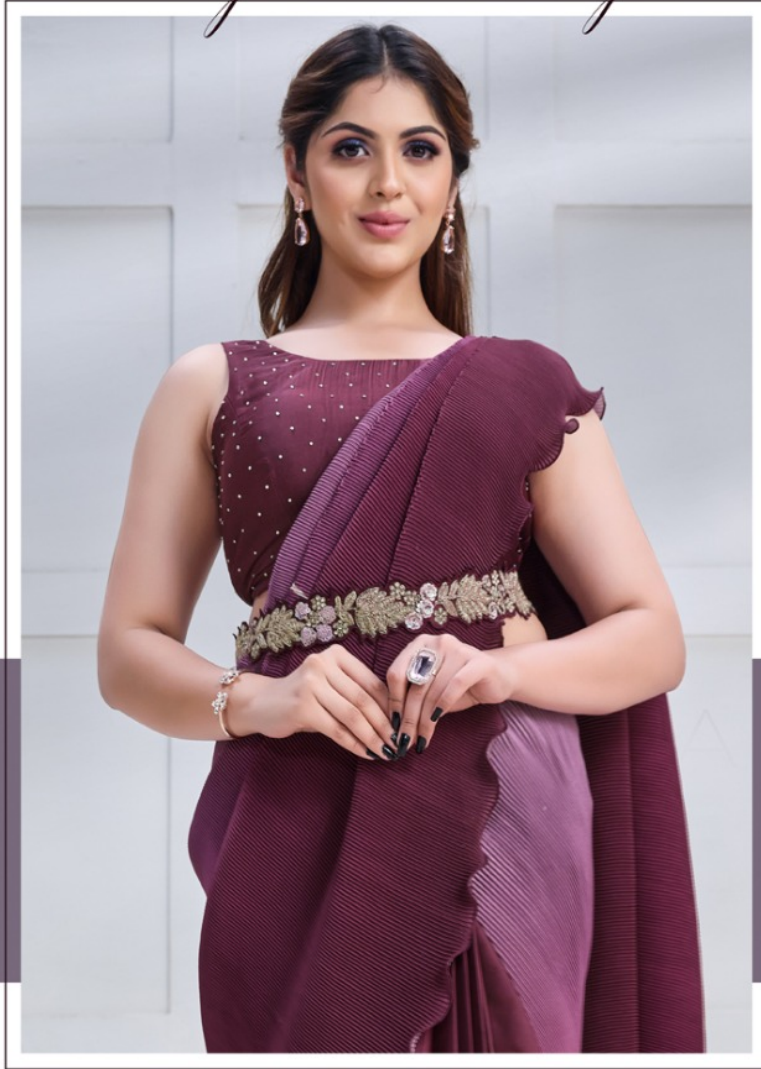
FASHIONS FADE, STYLE IS ETERNAL  
23522

FABRIC: CREPE SATIN SILK





GET WRAPPED IN  
*Majestic Beauty*



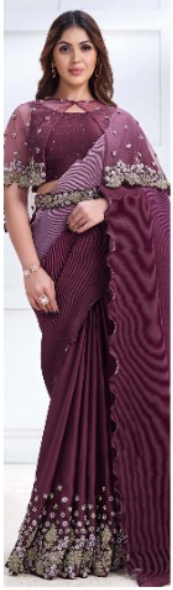
THIS  
WINE-COL-  
ORED SAREE  
WITH A HINT  
OF LIGHT  
PURPLE  
EXUDES  
GRACE AND  
CHARISMA.

FASHIONS FADE, STYLE IS ETERNAL  
23508

FABRIC: CREPE SATIN SILK







23508



23510



23511



23512



23518



23519



23520



23521



23522



23513



23514



23515



23516



23517



MOHMANTHAN™

*Majestica*