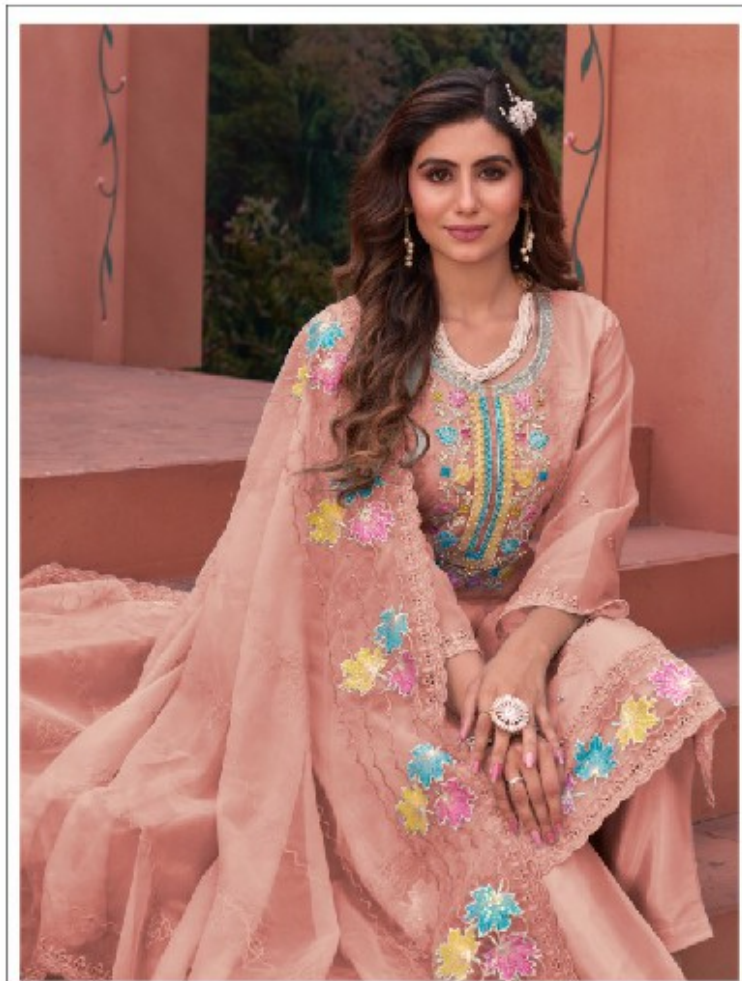




M-284 C



M-284 C



FEBRIC DETAIL

TOP:- PURE DULL ORGANZA EMBROIDERED WORK WITH MOTI WORK

BOTTOMWINNER:- SANTOON WITH WORK

DUPATTA:- PURE Orgza WITH EMBROIDERY WORK WITH CUTWORK

☞ DRY CLEAN ONLY.
 ✗ DO NOT USE ANY BLEACH OR STAIN REMOVING CHEMICAL.
 ☞ IRON THE FABRIC AT MODERATE TEMPERATURE.





M-284 A



FEBRIC DETAIL

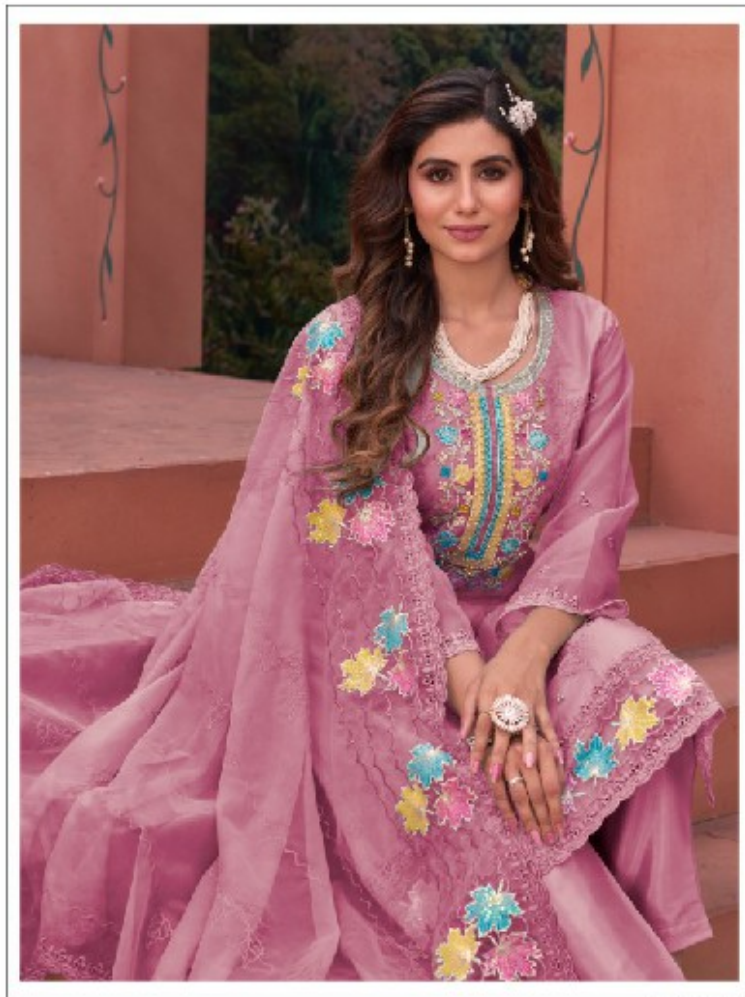
TOP:- PURE DULL ORGANZA EMBROIDERED WORK WITH MOTI WORK

BOTTOMWINNER:- SANTOON WITH WORK

DUPATTA:- PURE Orgza WITH EMBROIDERY WORK WITH CUTWORK

☞ DRY CLEAN ONLY.
 ✗ DO NOT USE ANY BLEACH OR STAIN REMOVING CHEMICAL.
 ☞ IRON THE FABRIC AT MODERATE TEMPERATURE.





M-284 D



FEBRIC DETAIL

TOP:- PURE DULL ORGANZA EMBROIDERED WORK WITH MOTI WORK

BOTTOMWINNER:- SANTOON WITH WORK

DUPATTA:- PURE Orgza WITH EMBROIDERY WORK WITH CUTWORK

☞ DRY CLEAN ONLY.
 ✖ DO NOT USE ANY BLEACH OR STAIN REMOVING CHEMICAL.
 ☞ IRON THE FABRIC AT MODERATE TEMPERATURE.





M-284 B



FEBRIC DETAIL

TOP:- PURE DULL ORGANZA EMBROIDERED WORK WITH MOTI WORK

BOTTOMWINNER:- SANTOON WITH WORK

DUPATTA:- PURE Orngza WITH EMBROIDERY WORK WITH CUTWORK

☞ DRY CLEAN ONLY.
 ✖ DO NOT USE ANY BLEACH OR STAIN REMOVING CHEMICAL.
 ☞ IRON THE FABRIC AT MODERATE TEMPERATURE.





FEBRIC DETAIL

TOP:- PURE DULL ORGANZA EMBROIDERED WORK WITH MOTI WORK

BOTTOMINNER:- SANTOON WITH WORK

DUPATTA:- PURE Orngza WITH EMBROIDERY WORK WITH CUTWORK



M-284 A



M-284 B



M-284 C



M-284 D



MUSHQ
A Brand of Sadeed









MUSHQ
Kashmiri Sarees

