



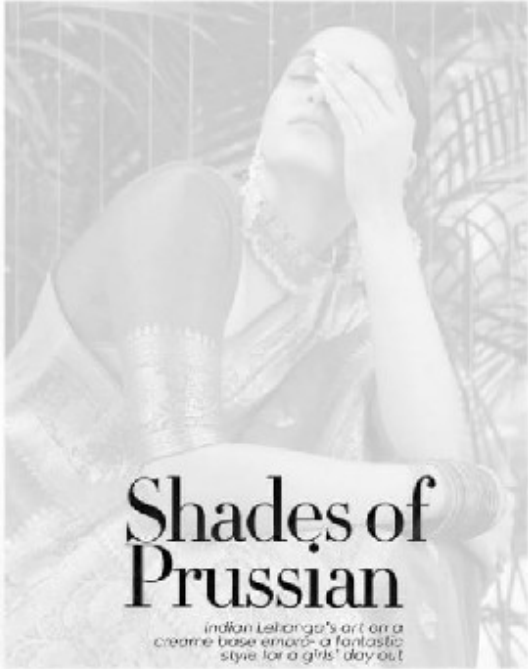
JOH RIVAAJ

# JANELLE

Vol-910



jc  
JOH RIVAAJ



**Shades of Prussian**  
indian Lehanga's art on a  
creme base emerald-a fantastic  
style for a girls' day out



JOH RIVAAJ



Beauty awakens it is sad to see,  
I don't think of all the misery but of the beauty that still remains.  
Luxuriance is beauty.  
Beauty is in the heart of the beholder.





Real beauty is to be true to oneself.  
That's what makes me feel good.  
Beauty is the first present nature gives  
to women and the first it takes away.

G L A M O R  
F I N E M E  
T O U C H

THE

# QUEEN

OF  
CULTURE

*glimpse of heaven*



*JR*  
JOH RIVAAJ

Q U E E N  
O F  
C U L T  
U R E







91002

The beauty of a woman is not in a facial mode but the true beauty in a woman is reflected in her soul....



JOH RIVAAJ



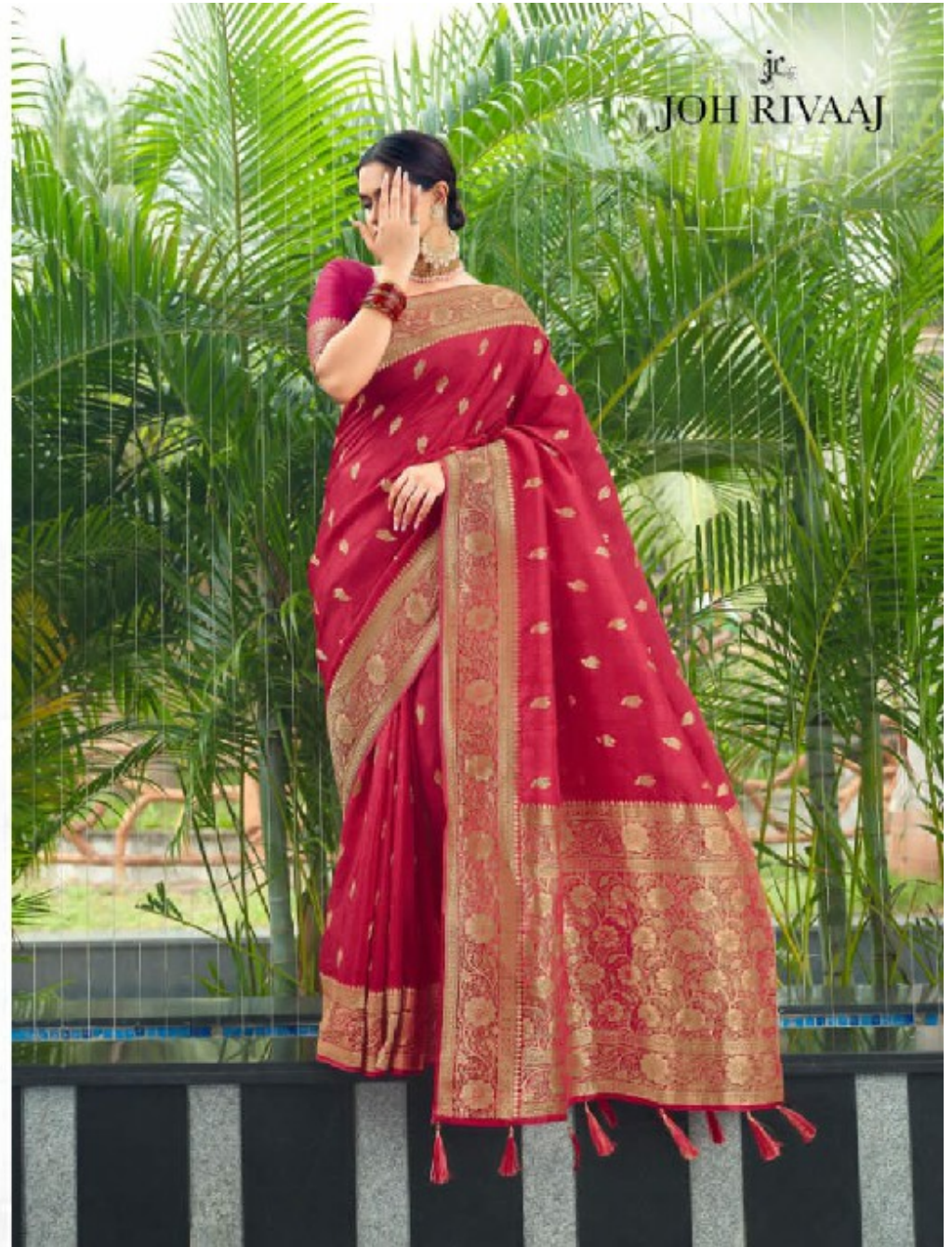
Euphony  
of deep  
hues



91005

Beauty awakens the soul to act.  
I don't think of all the misery but of the beauty that still remains.  
Endurance is beauty.  
Beauty is in the heart of the beholder.

JOH RIVAAJ





**QUAINT &  
HYPNOTIC**  
Never-seen-before

that are rendered in  
colours of life.



jr  
**JOH RIVAAJ**





91009





JOH RIVAAJ

**Be  
you**  
Accepting the cultures  
and traditions with  
love and respect.



In this sandstone ensemble inspired by Indian paisley

91004



**EARTHY  
COMPOSITIONS  
LOOK LIKE  
ADREAM**

The beauty of a woman is not in a facial mode  
but the true beauty in a woman is  
reflected in her soul...



91001



91002



91003



91007



91008



91004



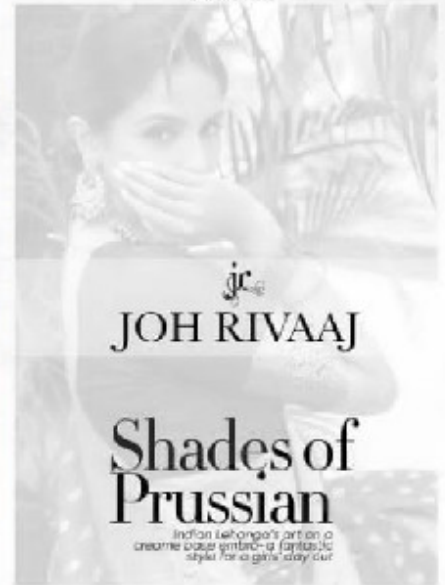
91005



91006



91009



JOH RIVAAJ

Shades of Prussian

Indian lehanga's part on a cream color fabric is fantastic style for a girl's day out