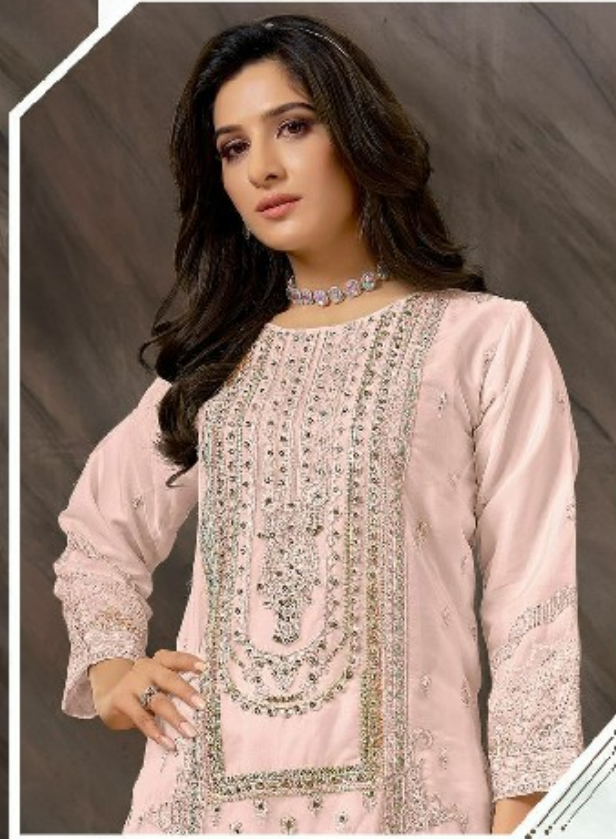


**Fepic®**

**CRAFTED NEEDLE®**  
A Label of Elegance by **Fepic®**



**WASHING INSTRUCTIONS**

DO NOT USE ANY TYPE OF BLEACH OR STAIN REMOVING CHEMICALS  
BEFORE CUTTING / STITCHING. FABRIC SHOULD BE SOAKED IN WATER  
(ALL COMPONENTS SEPARATELY) FOR 15 MINUTES

DO NOT KEEP WET FABRIC IN TWISTED FORM IN ORDER TO AVOID COPY MARKS |

WASH COLOURED AND WHITE FABRICS SEPARATELY

IRON CLOTHES AT MODERATE TEMPERATURE | DO NOT DRY FABRIC IN DIRECT SUNLIGHT  
(EXTRA LACES, HANGINGS AND ACCESSORIES ARE NOT INCLUDED)

GCN -842 B





Fepic®

CRAFTED NEEDLE®  
A Label of Elegance by Fepic®



**WASHING INSTRUCTIONS**

DO NOT USE ANY TYPE OF BLEACH OR STAIN REMOVING CHEMICALS  
BEFORE CUTTING / STITCHING, FABRIC SHOULD BE SOAKED IN WATER  
(ALL COMPONENTS SEPARATELY) FOR 15 MINUTES  
DO NOT KEEP WET FABRIC IN TWISTED FORM IN ORDER TO AVOID COPY MARKS |  
WASH COLOURED AND WHITE FABRICS SEPARATELY  
IRON CLOTHES AT MODERATE TEMPERATURE | DO NOT DRY FABRIC IN DIRECT SUNLIGHT  
(EXTRA LACES, HANGINGS AND ACCESSORIES ARE NOT INCLUDED)

— 3 CN -842 3 —





**Fepic**<sup>®</sup>

**CRAFTED NEEDLE**<sup>®</sup>  
A Label of Elegance by **Fepic**<sup>®</sup>



**WASHING INSTRUCTIONS**

DO NOT USE ANY TYPE OF BLEACH OR STAIN REMOVING CHEMICALS  
BEFORE CUTTING / STITCHING, FABRIC SHOULD BE SOAKED IN WATER  
(ALL COMPONENTS SEPARATELY) FOR 15 MINUTES  
DO NOT KEEP WET FABRIC IN TWISTED FORM IN ORDER TO AVOID COPY MARKS |  
WASH COLOURED AND WHITE FABRICS SEPARATELY  
IRON CLOTHES AT MODERATE TEMPERATURE | DO NOT DRY FABRIC IN DIRECT SUNLIGHT  
(EXTRA LACES, HANGINGS AND ACCESSORIES ARE NOT INCLUDED)

GCN -842 CD





CN-842



CN-842 B



CN-842 C

**Fepic**®

 **CRAFTED NEEDLE**®  
A Label of Elegance by **Fepic**®

 :\_Fepic

 :\_Fb.com/Fepic11