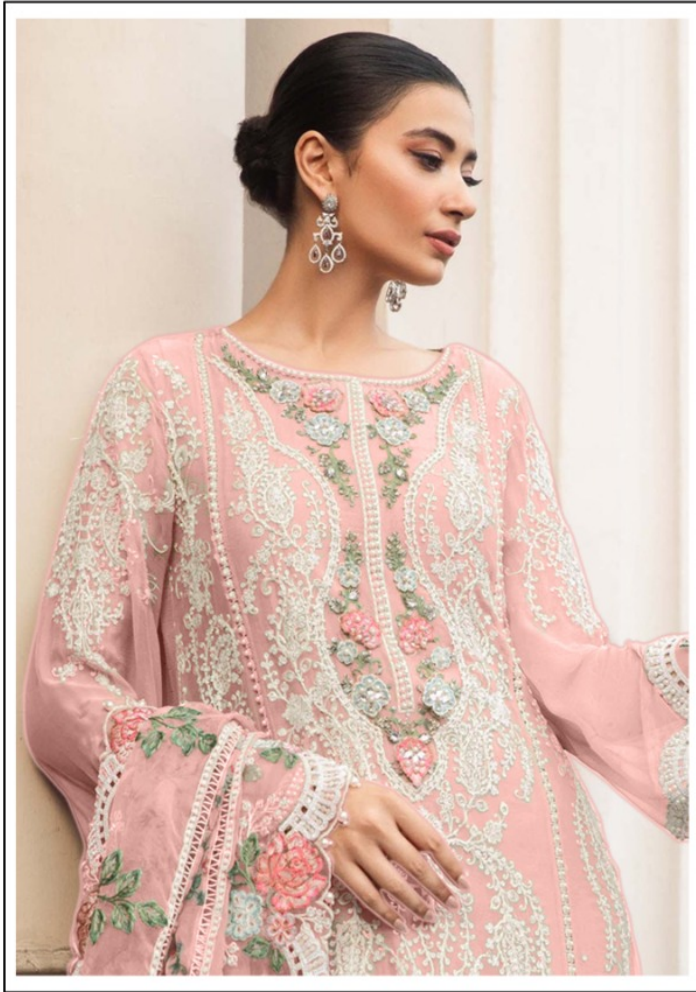




**M-298 A**



M-298 A



### FEBRIC DETAIL

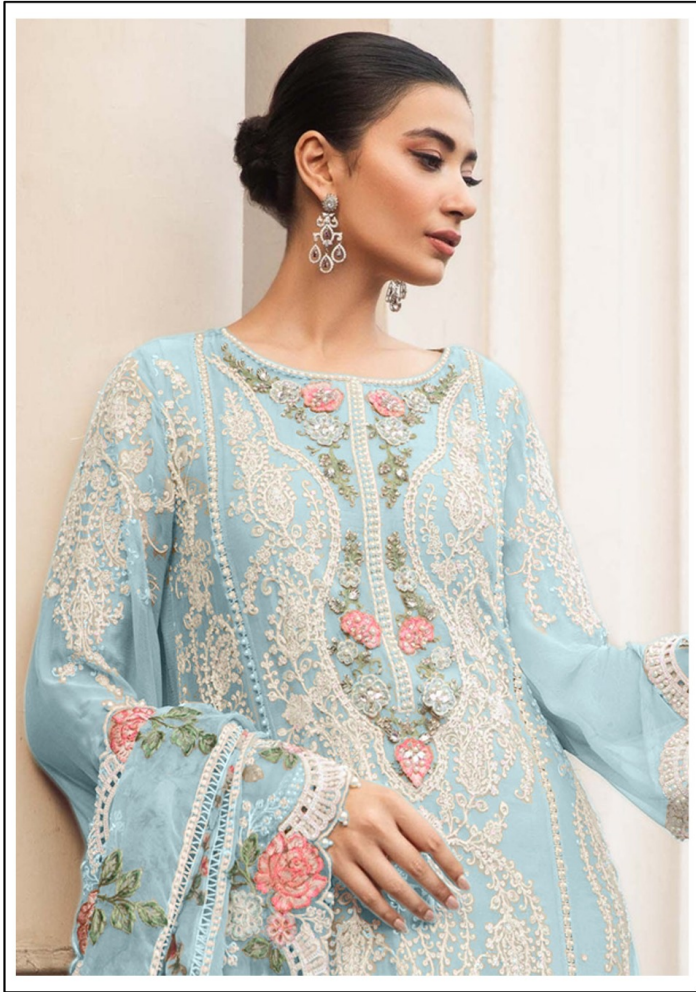
**TOP:-** PURE DULL ORGANZA EMBROIDERED WORK WITH MOTI WORK

**BOTTOMINNER:-** SANTOON

**DUPATTA:-** PURE ORGANZA WITH DIGITAL PRINTS WITH HEAVY EMBROIDERY WORK

☞ DRY CLEAN ONLY.  
☞ DO NOT USE ANY BLEACH OR STAIN REMOVING CHEMICAL.  
☞ IRON THE FABRIC AT MODERATE TEMPERATURE.





M-298 B



**FEBRIC DETAIL**

**TOP:-** PURE DULL ORGANZA EMBROIDERED WORK WITH MOTI WORK

**BOTTOMINNER:-** SANTOON

**DUPATTA:-** PURE ORGANZA WITH DIGITAL PRINTS WITH HEAVY EMBROIDERY WORK

☞ DRY CLEAN ONLY.  
 ✗ DO NOT USE ANY BLEACH OR STAIN REMOVING CHEMICAL.  
 ☐ IRON THE FABRIC AT MODERATE TEMPERATURE.





M-298 C



**FEBRIC DETAIL**

**TOP:-** PURE DULL ORGANZA EMBROIDERED WORK WITH MOTI WORK

**BOTTOMINNER:-** SANTOON

**DUPATTA:-** PURE ORGANZA WITH DIGITAL PRINTS WITH HEAVY EMBROIDERY WORK

☞ DRY CLEAN ONLY.  
 ✘ DO NOT USE ANY BLEACH OR STAIN REMOVING CHEMICAL.  
 ☞ IRON THE FABRIC AT MODERATE TEMPERATURE.





M-298 D



**FEBRIC DETAIL**

**TOP:-** PURE DULL ORGANZA EMBROIDERED WORK WITH MOTI WORK

**BOTTOMINNER:-** SANTOON

**DUPATTA:-** PURE ORGANZA WITH DIGITAL PRINTS WITH HEAVY EMBROIDERY WORK

☞ DRY CLEAN ONLY.  
 ✘ DO NOT USE ANY BLEACH OR STAIN REMOVING CHEMICAL.  
 ☞ IRON THE FABRIC AT MODERATE TEMPERATURE.





**TOP:-** PURE DULL ORGANZA EMBROIDERED WORK  
WITH MOTI WORK  
**BOTTOMINNER:-** SANTOON  
**DUPATTA:-** PURE ORGANZA WITH DIGITAL PRINTS WITH  
HEAVY EMBROIDERY WORK



M-298 A



M-298 B



M-298 C



M-298 D