



**Motifz**  
FASHION FORWARD

D.no-476-B



**TOP- ORGANZA WITH EMBROIDERY  
WITH KHATLI WORK**

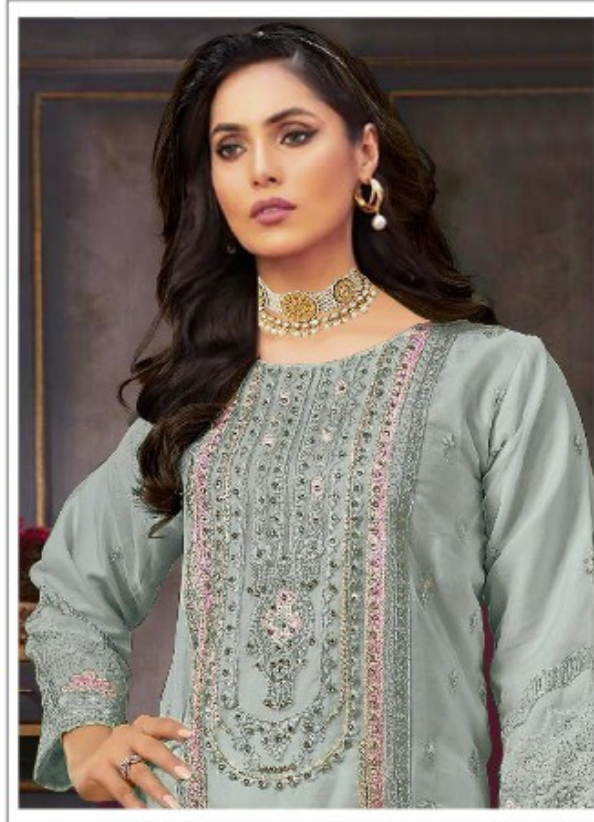
**BOTTOM- DULL SANTOON**

**DUPATTA- ORGANZA WITH EMBROIDERY**



**Motifz**  
FASHION FORWARD

D.no-476-C



**TOP-** ORGANZA WITH EMBROIDERY  
WITH KHATLI WORK

**BOTTOM-** DULL SANTOON

**DUPATTA-** ORGANZA WITH EMBROIDERY



**Motifz**  
FASHION FORWARD

D.no-476-D



**TOP- ORGANZA WITH EMBROIDERY  
WITH KHATLI WORK**

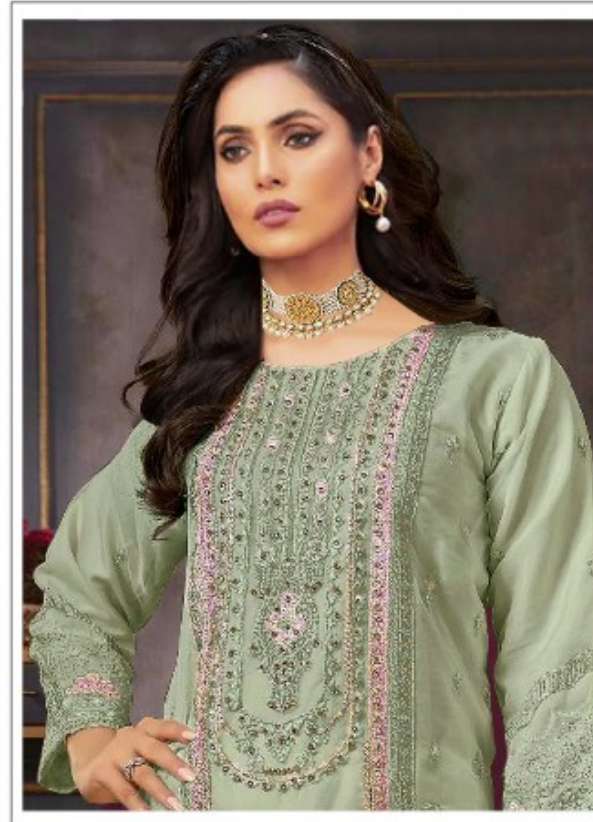
**BOTTOM- DULL SANTOON**

**DUPATTA- ORGANZA WITH EMBROIDERY**



**Motifz**  
FASHION FORWARD

D.no-476-A



**TOP-** ORGANZA WITH EMBROIDERY  
WITH KHATLI WORK

**BOTTOM-** DULL SANTOON

**DUPATTA-** ORGANZA WITH EMBROIDERY



**TOP- ORGANZA WITH EMBROIDERY  
WITH KHATLI WORK**

**BOTTOM- DULL SANTOON**

**DUPATTA- ORGANZA WITH EMBROIDERY**



**D.no-476-A**



**D.no-476-B**



**D.no-476-C**



**D.no-476-D**