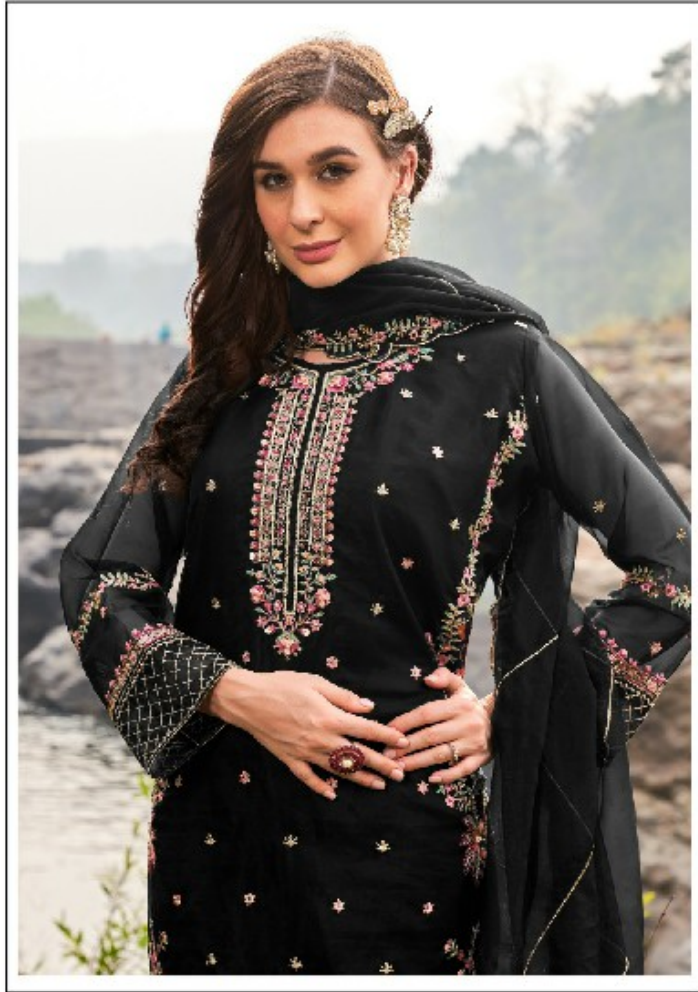




M-300 C



M-300 A



FEBRIC DETAIL

TOP:- PURE DULL ORGANZA EMBROIDERED WORK WITH MOTI WORK

BOTTOMINNER:- SANTOON

DUPATTA:- PURE ORGANZA WITH EMBROIDERED WORK WITH CUT WORK

☞ DRY CLEAN ONLY.
☞ DO NOT USE ANY BLEACH OR STAIN REMOVING CHEMICAL
☞ IRON THE FABRIC AT MODERATE TEMPERATURE.





M-300 D



FEBRIC DETAIL

TOP:- PURE DULL ORGANZA EMBROIDERED WORK WITH MOTI WORK

BOTTOMINNER:- SANTOON

DUPATTA:- PURE ORGANZA WITH EMBROIDERED WORK WITH CUT WORK

- ☐ DRY CLEAN ONLY.
- ⊗ DO NOT USE ANY BLEACH OR STAIN REMOVING CHEMICAL
- ☐ IRON THE FABRIC AT MODERATE TEMPERATURE.





M-300 B



FEBRIC DETAIL

TOP:- PURE DULL ORGANZA EMBROIDERED WORK WITH MOTI WORK

BOTTOMINNER:- SANTOON

DUPATTA:- PURE ORGANZA WITH EMBROIDERED WORK WITH CUT WORK

☞ DRY CLEAN ONLY.
☞ DO NOT USE ANY BLEACH OR STAIN REMOVING CHEMICAL
☞ IRON THE FABRIC AT MODERATE TEMPERATURE.





M-300 C



FEBRIC DETAIL

TOP:- PURE DULL ORGANZA EMBROIDERED WORK WITH MOTI WORK

BOTTOMINNER:- SANTOON

DUPATTA:- PURE ORGANZA WITH EMBROIDERED WORK WITH CUT WORK

☞ DRY CLEAN ONLY.
☞ DO NOT USE ANY BLEACH OR STAIN REMOVING CHEMICAL
☞ IRON THE FABRIC AT MODERATE TEMPERATURE.





**TOP:- PURE DULL ORGANZA EMBROIDERED WORK
WITH MOTI WORK**

BOTTOMINNER:- SANTOON

**DUPATTA:- PURE ORGANZA WITH EMBROIDERED WORK
WITH CUT WORK**



M-300 A



M-300 B



M-300 C



M-300 D