

NF
NISHANT
FASHION
Shubha





FASHION SHOULD

FASHION SHOULD BE A FORM OF LOCALISM AND NOT A FORM OF IMPERSONALITY



62001



GRACEFUL

A BLEND OF COLORS TO THE RIGHT OF THE CORNER OF THE ART OF THE OLD AND THE NEW IS THE KEY TO THE FINEST QUALITY.



62002 |

MAJESTIC

IMMERSE YOURSELF IN UNEXPECTED BRIGHT COLORS & TEXTURES.



62003





CELEBRATE
A BREATHTAKING ARRAY OF FINE DETAILING & INTRICATE DESIGN
INSPIRED BY INDIAN CULTURE

A collage of three images of a woman in traditional Indian attire. The top image shows her in a black sari with a white border, looking upwards. The middle image shows her in a purple sari with a red border, sitting and looking to the side. The bottom image shows her in a black sari with a white border, sitting and looking down. The text 'CELEBRATE' is written in large, bold, black letters. Below it, the tagline 'A BREATHTAKING ARRAY OF FINE DETAILING & INTRICATE DESIGN' and 'INSPIRED BY INDIAN CULTURE' is written in smaller, black letters.

TRADITIONAL CLUB

FASHION SHOULD BE A FORM OF ESCAPISM, AND NOT A FORM OF IMPRISONMENT



62006



ROMANCE

THIS SEASON, YOUR LOOK NEEDS BETTER DEFINITION WITH JUST A LITTLE ATTENTION TO DETAIL.



62004



ETERNITY



THE GLAMOUR IS SOMETHING WHICH WILL FULFILL ALL THE REQUIREMENTS FOR GLOSSY & TRENDY LOOK

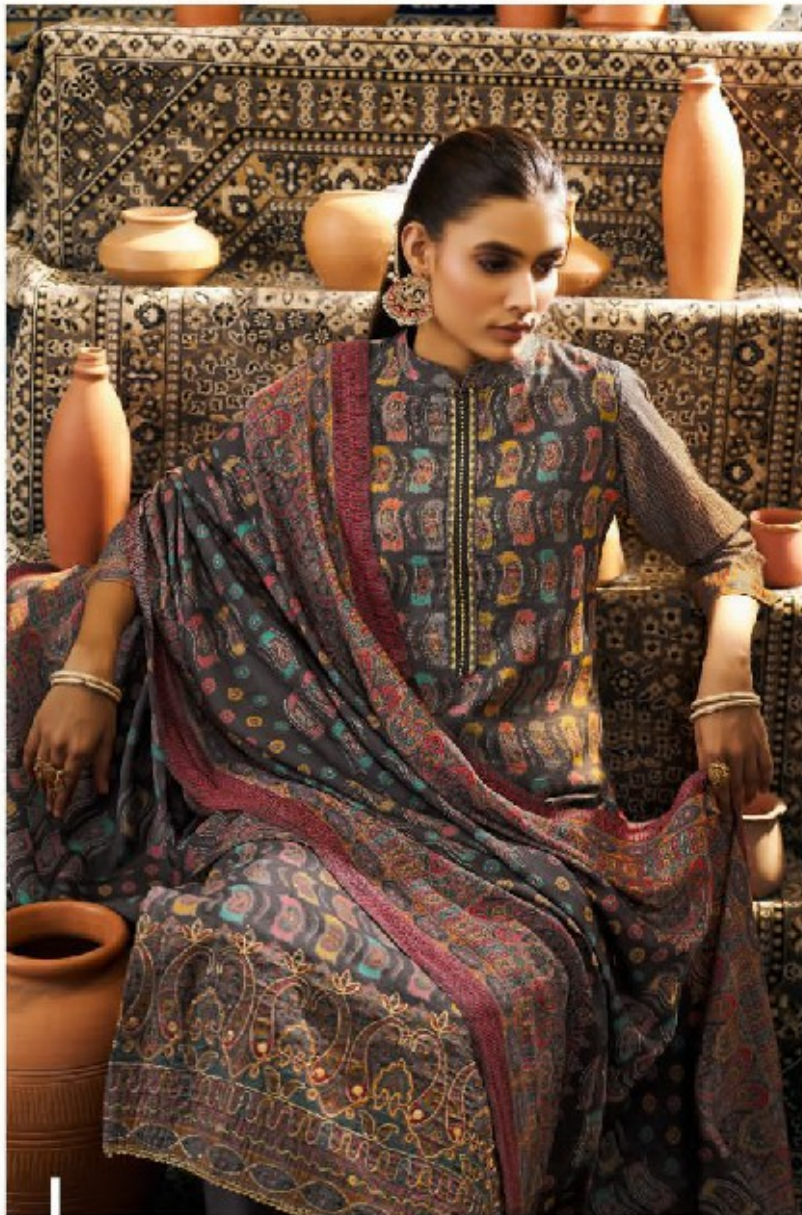
62007





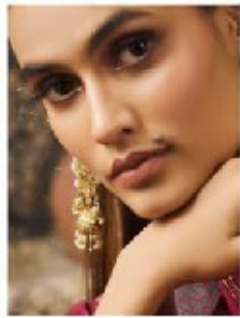
ROMANCE

THIS SEASON, YOUR LOOK GETS BETTER DEFINITELY WITH JUST A LITTLE ATTENTION TO DETAIL.



62008





TRADITIONAL CLUB

FASHION SHOULD BE A FORM OF ESCAPISM, AND NOT A FORM OF IMPROVEMENT



62001



62002



62003



62004



62005



62006



62007



62008

