

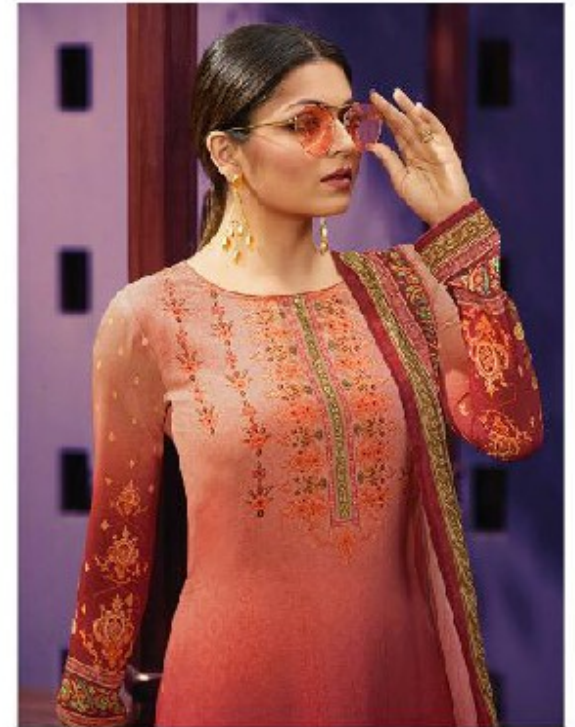




The season's *200*

Nitya™

• 200 •





*Nitya*

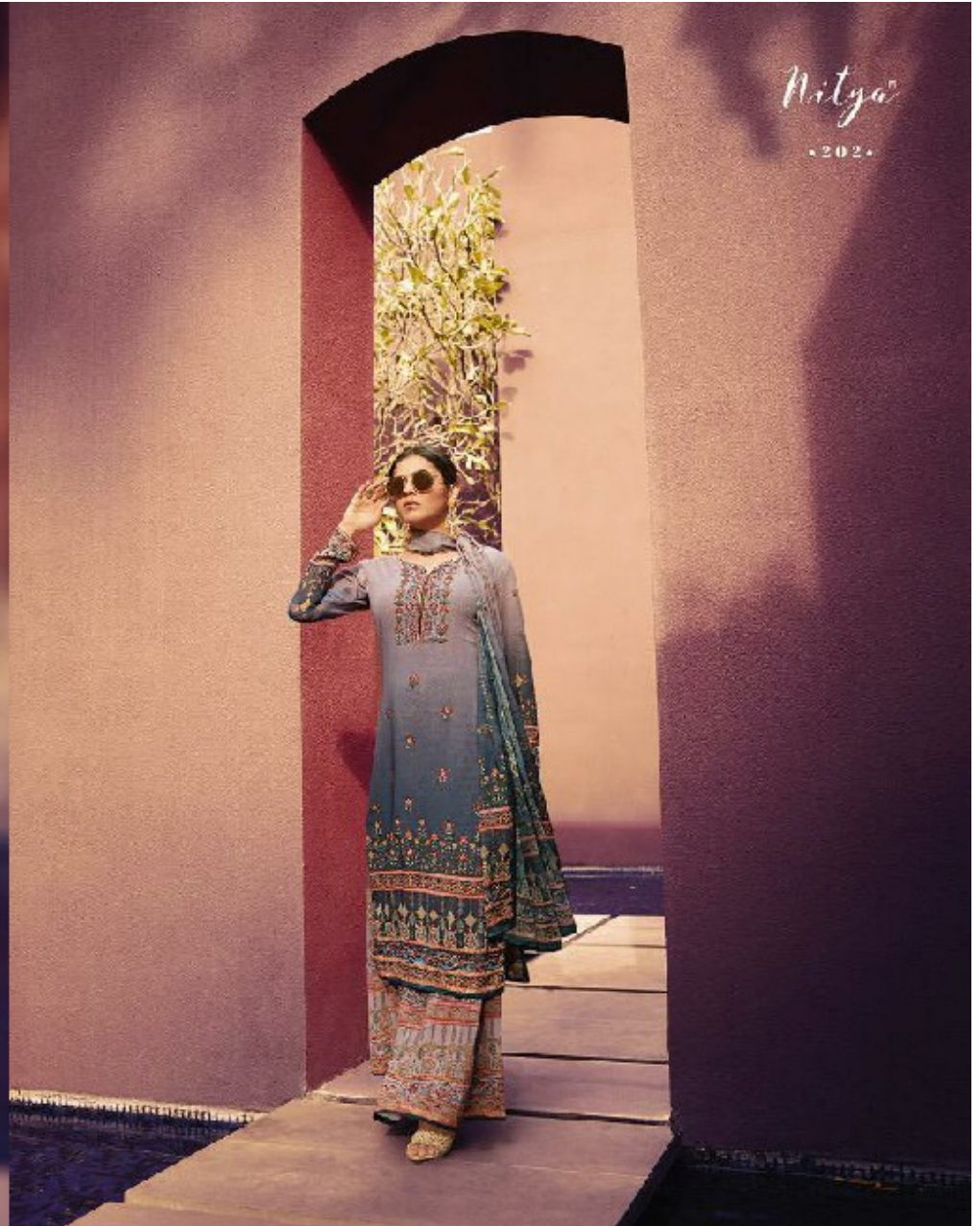


• 205 •

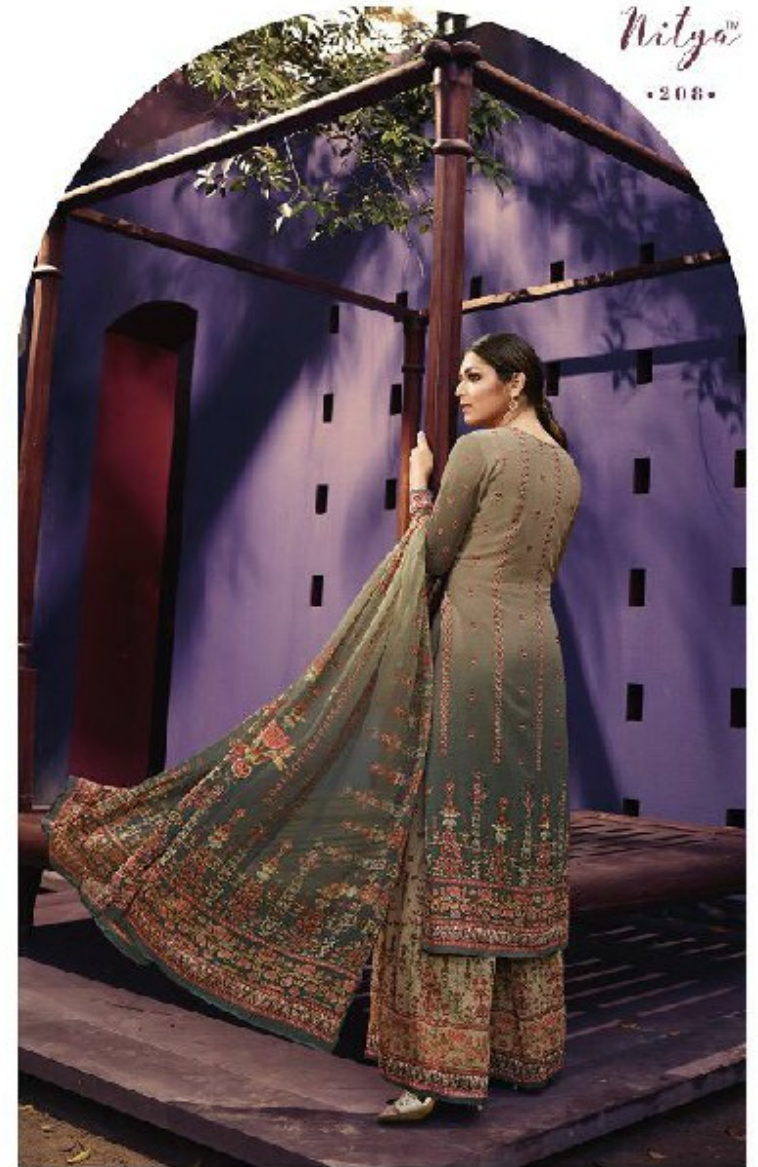
*The season's*



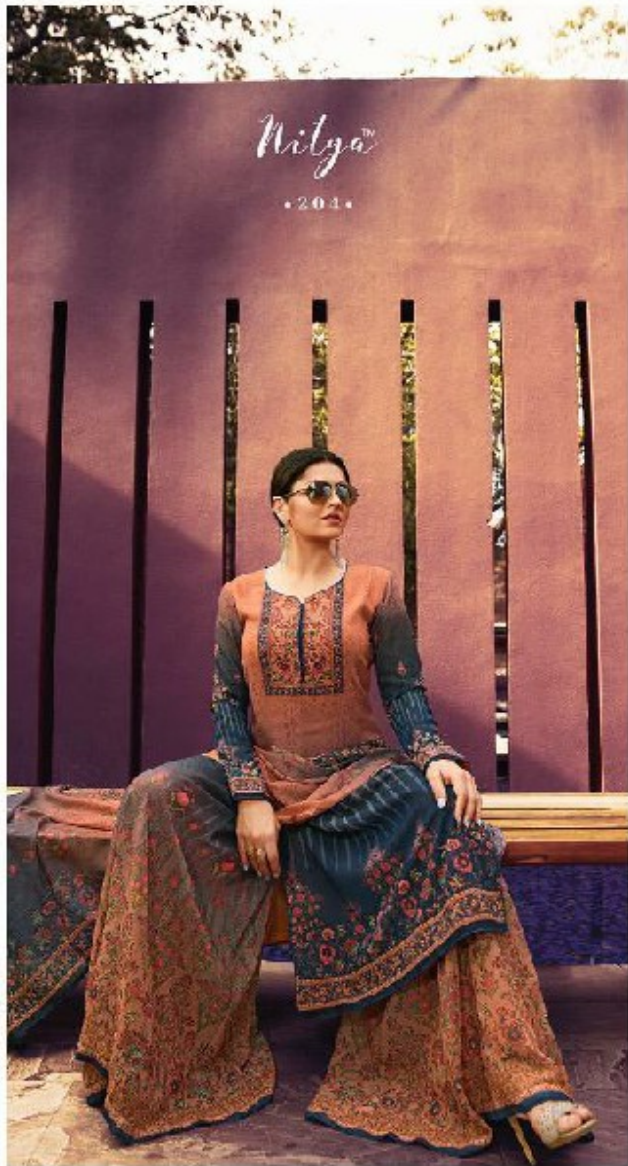




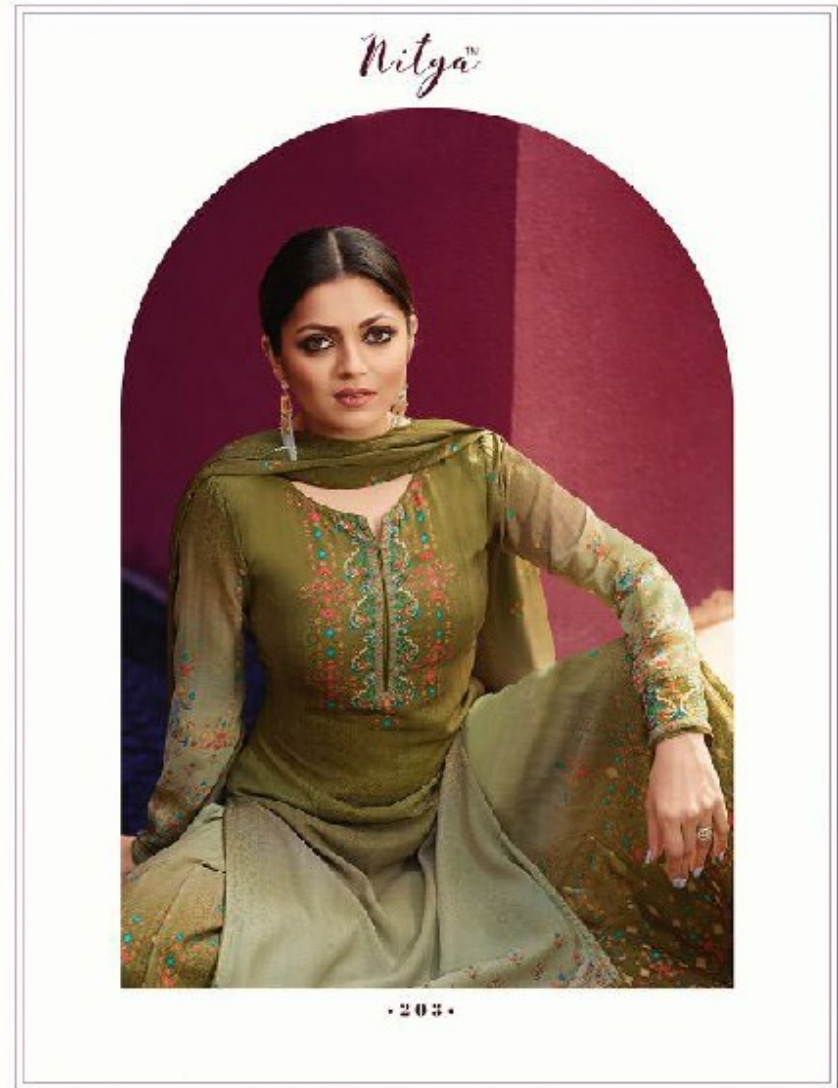


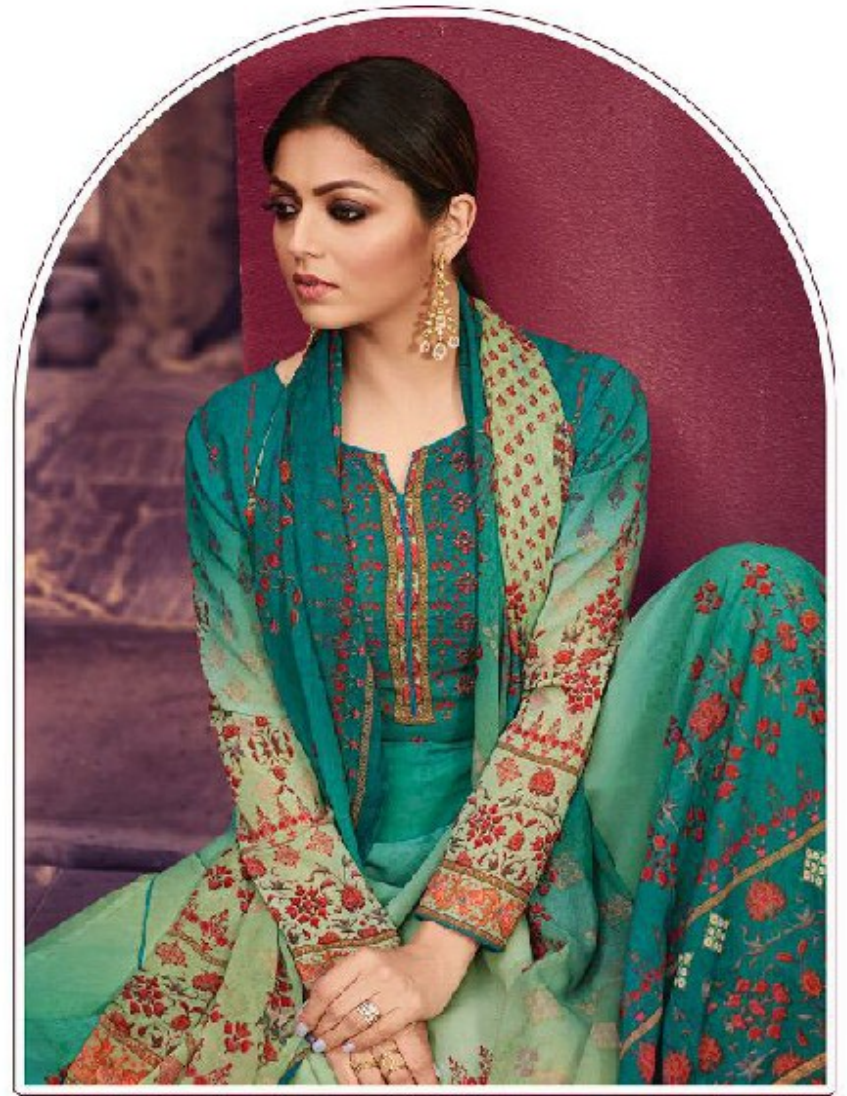






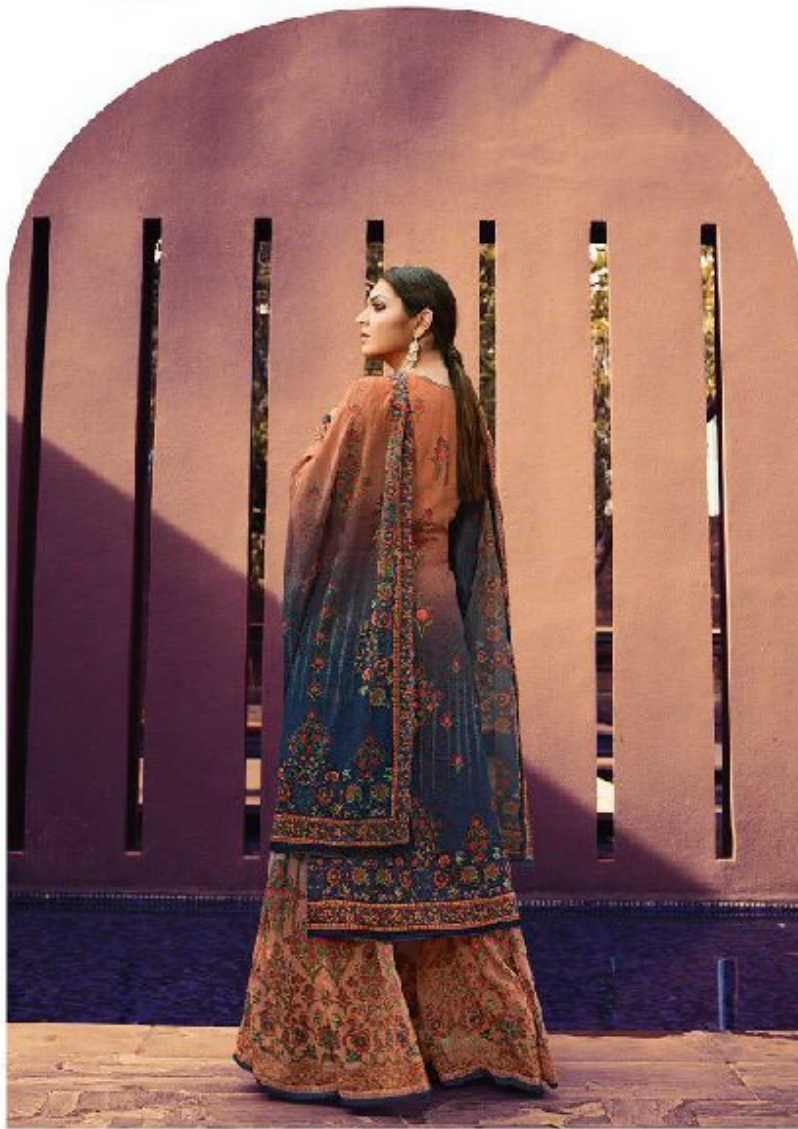




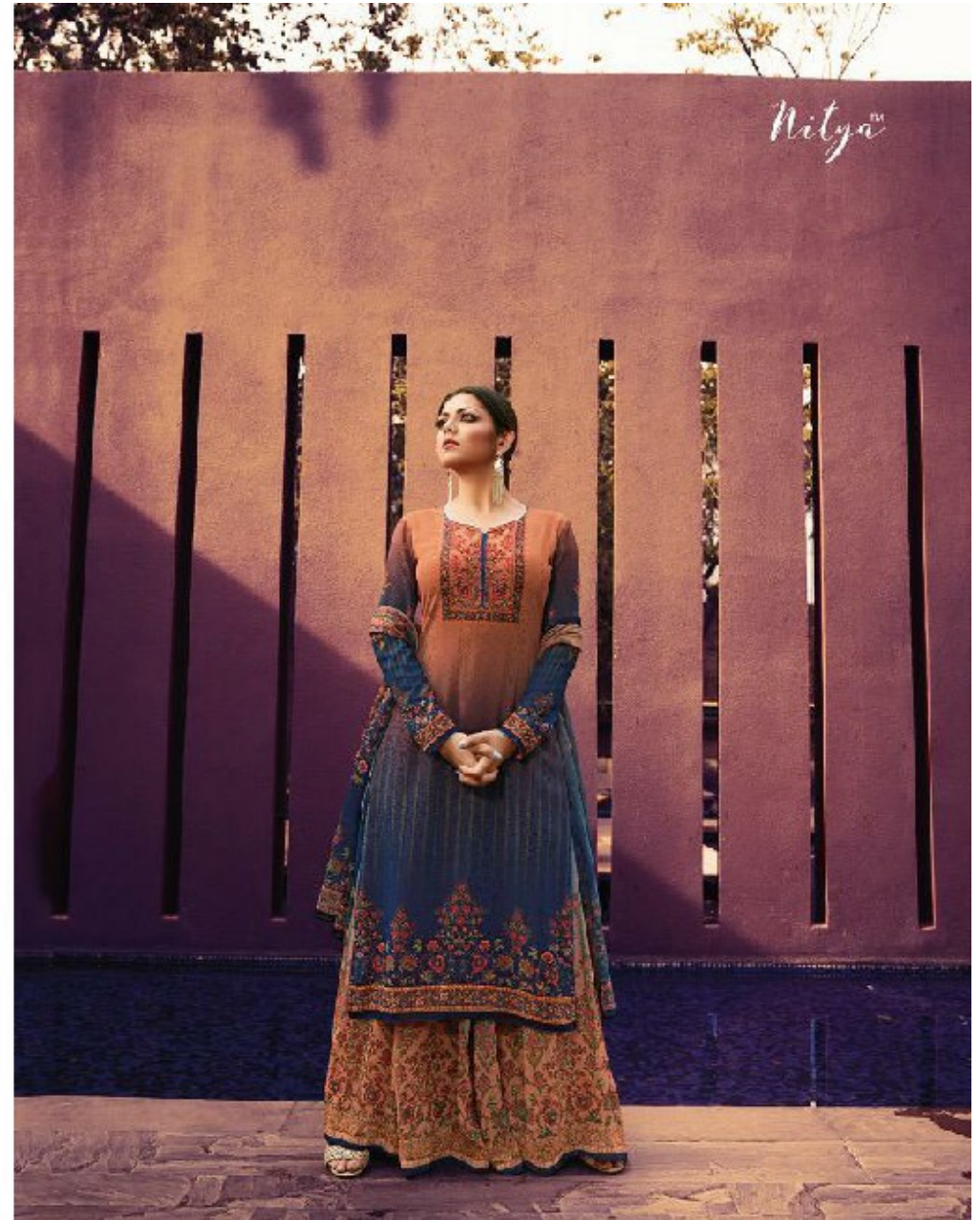




The season 2011

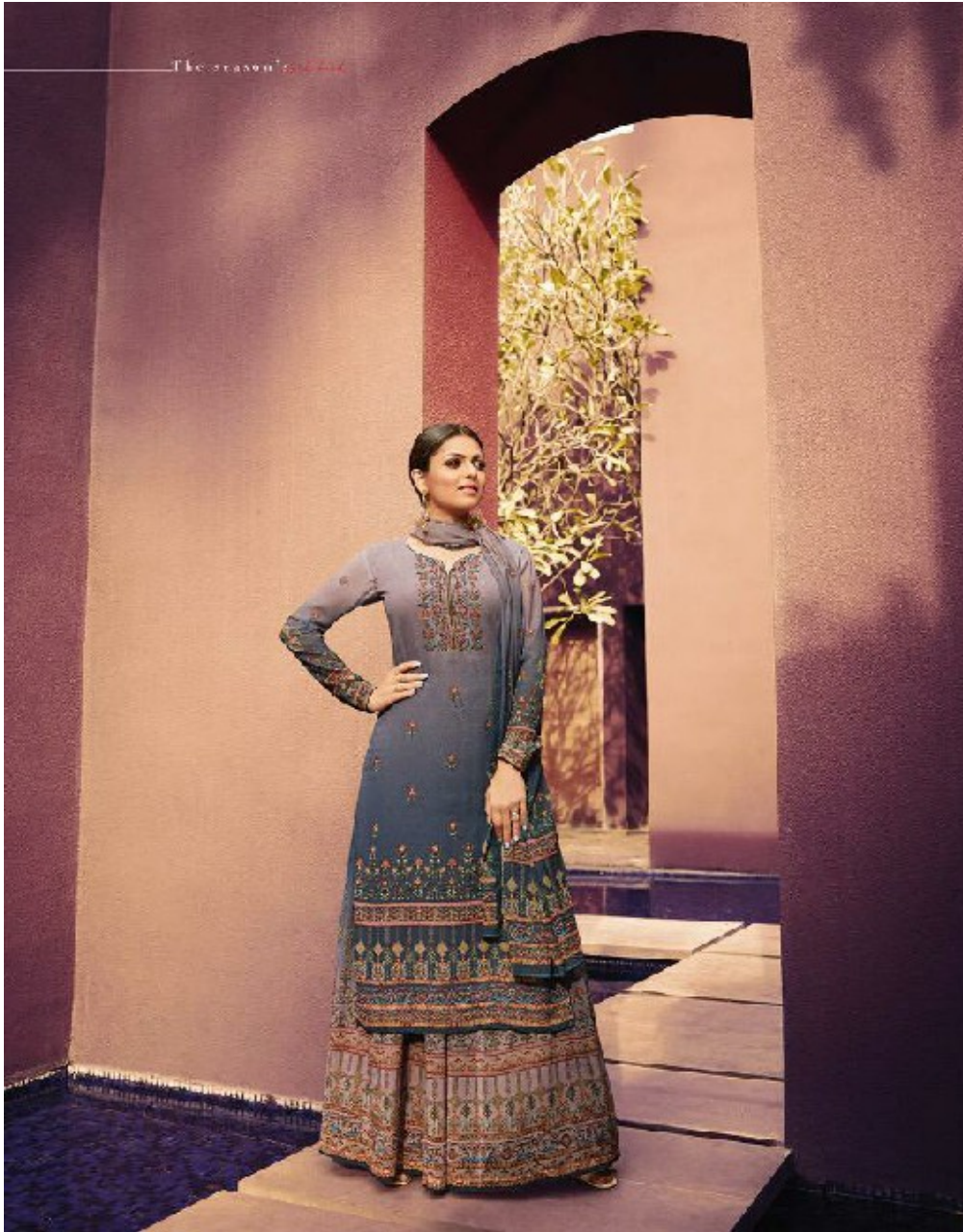


• 201 •

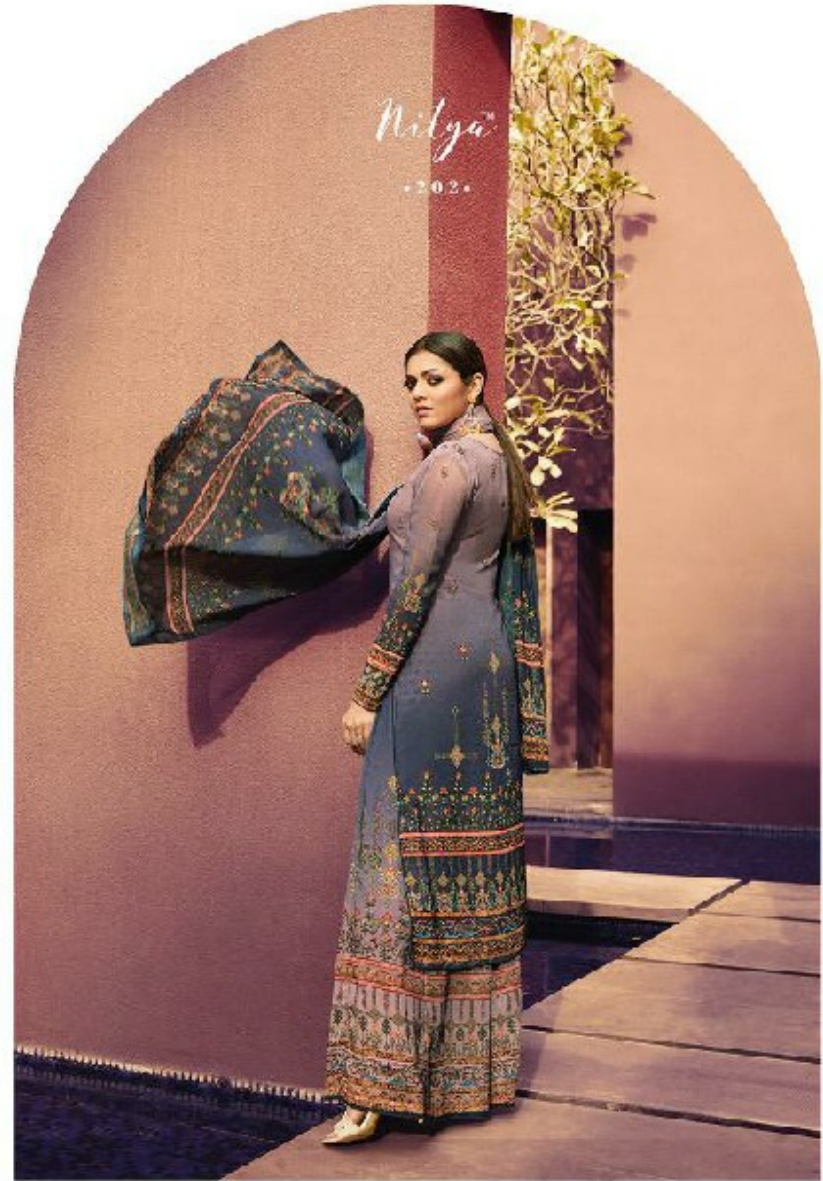




The season's 2024

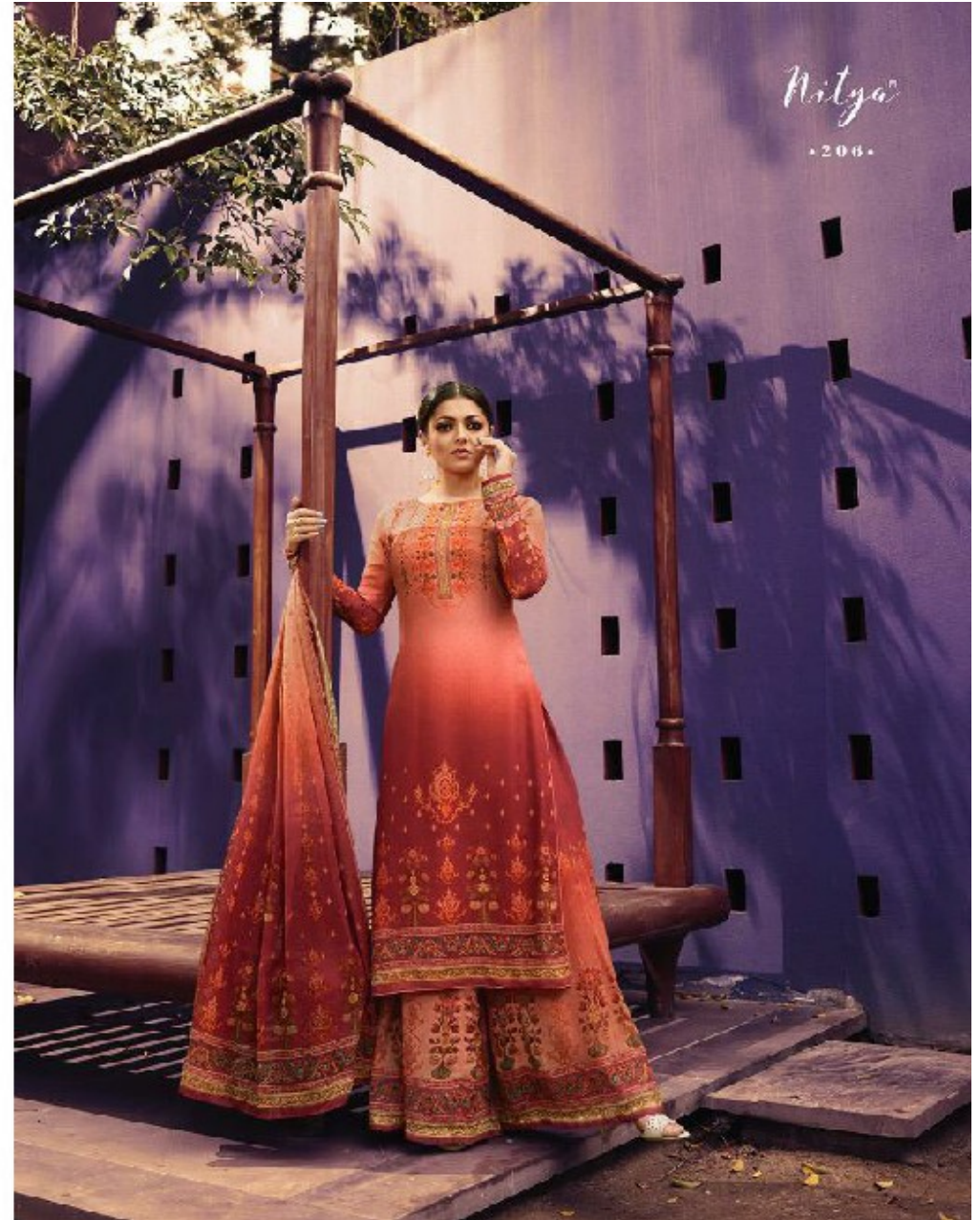


Nitya  
2024

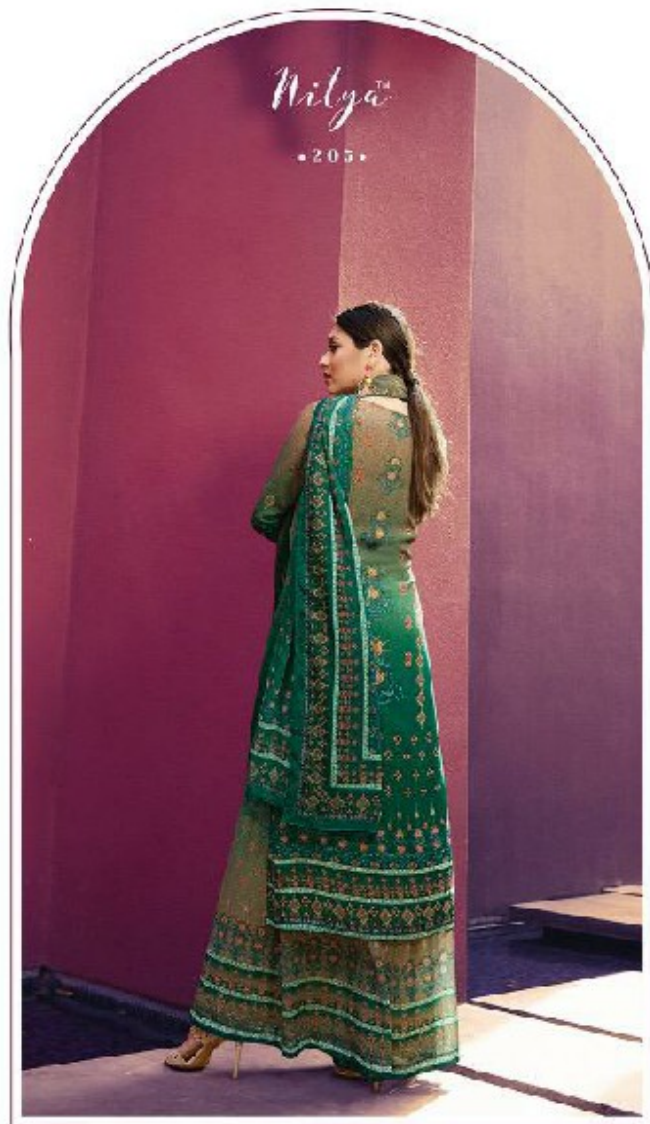




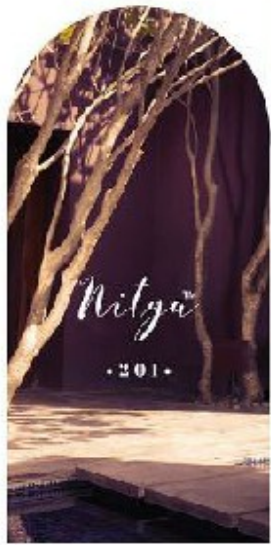
The season 2006













The season's *new*



COL  
COL  
EST

*The*

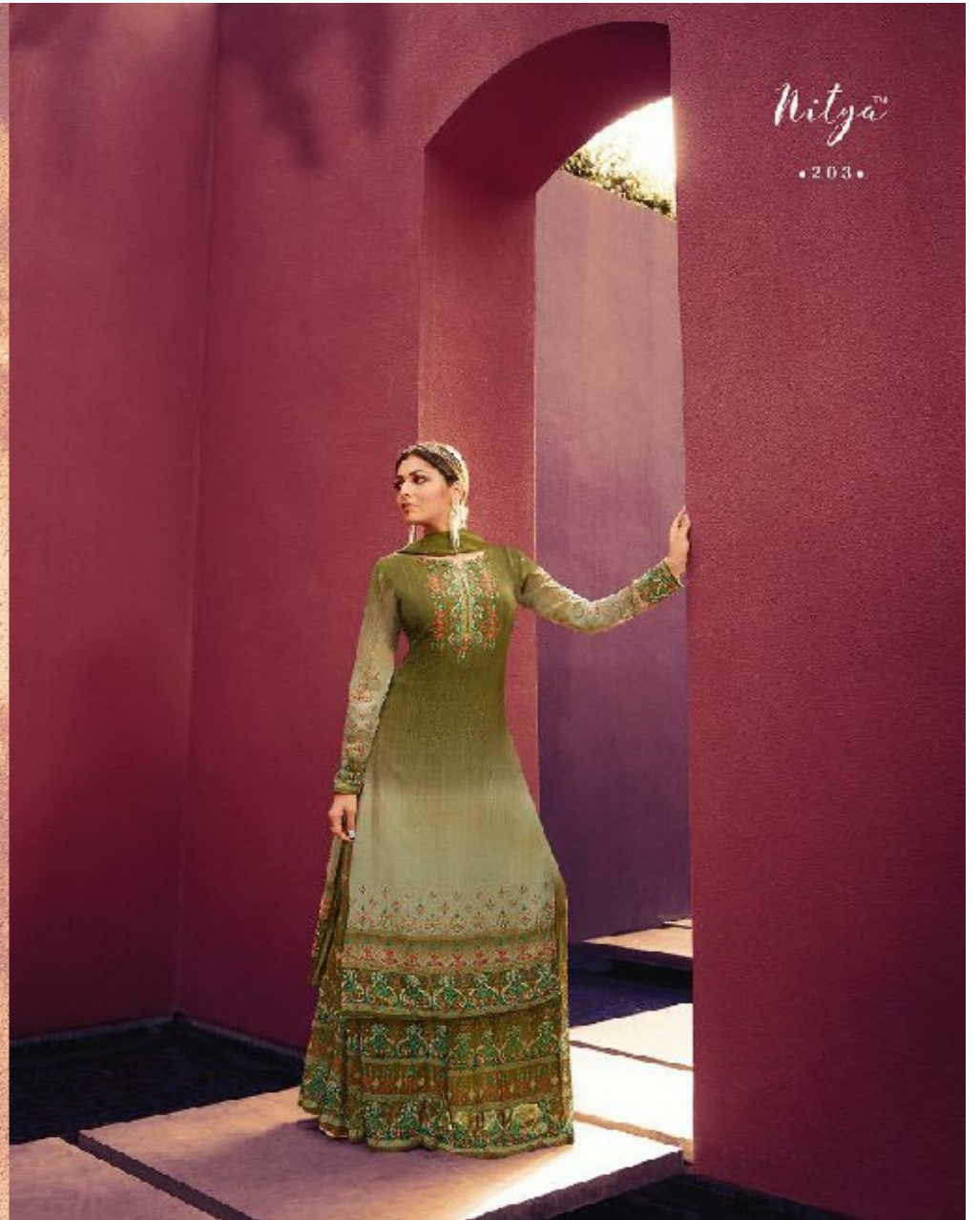
*Face of the Season*

With the season's new philosophy, Neysa presents a new kind of collection to bring change into our everyday wardrobe in the form of modern, stylish and comfortable clothing. This is your summer style with vibrant colors, prints, textures and colors.





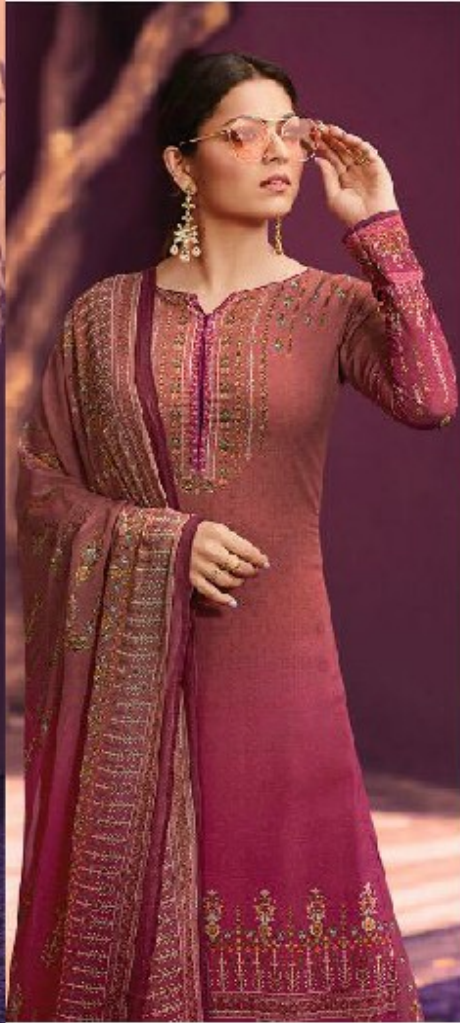








The season's *Spice level*



Nitya™

•201•

