

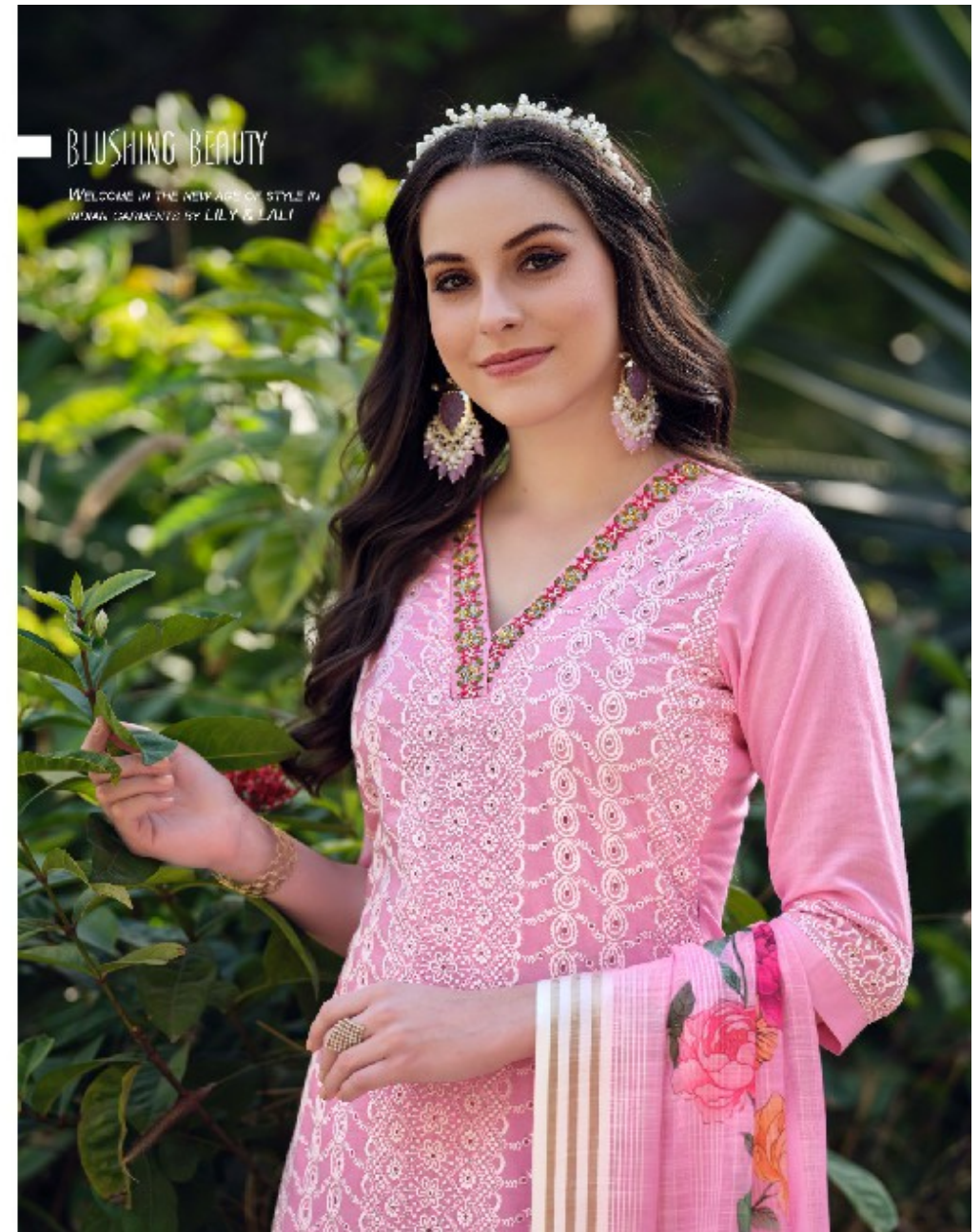
LILY&LALI[®]

GULS PRIDE

A PRODUCT OF FIOND GROUP



COTTON
Carnival
VOL 2





LILY&LALI[®]
GULS PRIDE
A PRODUCT OF *THE CLOSET*

STYLE MANTRA

DESIGN DRINGS FLASHY PATTERNS ON FLIMBY FABRIC
SIMPLEST STYLE INTO SOMETHING WORTHWHILE.





A photograph of two women in traditional Pakistani attire. The woman in the foreground is wearing a purple and white patterned dress with a matching shawl and is smiling while touching a green bush. The woman in the background is wearing a light green dress and is looking towards the bush. The scene is set outdoors with a building in the background.

LILY & LALI™
GULS PRIDE
A member of the GULM group

STYLE MANTRA

DRINK UP! GET FLAVOURY PASTAS
OR CHICKEN PASTA. STAY EST.
STYLE INTO SOMETHING WORTHWHILE.





BLUSHING BEAUTY

WELCOME IN THE NEW AGE OF STYLE IN INDIAN GARMENTS BY LILY & LALI



LILY&LALI
SULS PRIDE
A PRODUCT OF **SHREYAS** GROUP



16904



COTTON
Carnival VOL 2

LILY & LALI[®]

GULS PRIDE

A PRODUCT OF **Friend** GROUP





HOT FASHION TREND..

THE TOP LIST FASHION WOMEN IN INDIA IS ON
TAP WITH HER FAVORITE COUNTRY
PARTS AROUND THE WORLD



LILY & LALI
BY S. SETHI
A PRODUCT OF GRAND EXPORT

16905



LILY & LALITM
GULS PRIDE
A PRODUCT OF GULS GROUP

HOT FASHION TREND..

THE TOP DOT FASHION WOMAN IN INDIA IS ON
PAR WITH HER PRIVILEGED COUNTRY.
PARTS AROUND THE WORLD





LILY & LALI[®]
GULS PRIDE
A PRODUCT OF WINDY GROUP

COTTON
Carnival^{vol.2}



16901



16902



16903



16904



16905



16906