

STATEMENT
STYLE



LILY & LALI[®]
GULS PRIDE
A PRODUCT OF **frano** GROUP

MELODY 4



Forget the rules. If you like it, wear it



18108



Life isn't perfect, but your Kurti can be



18106

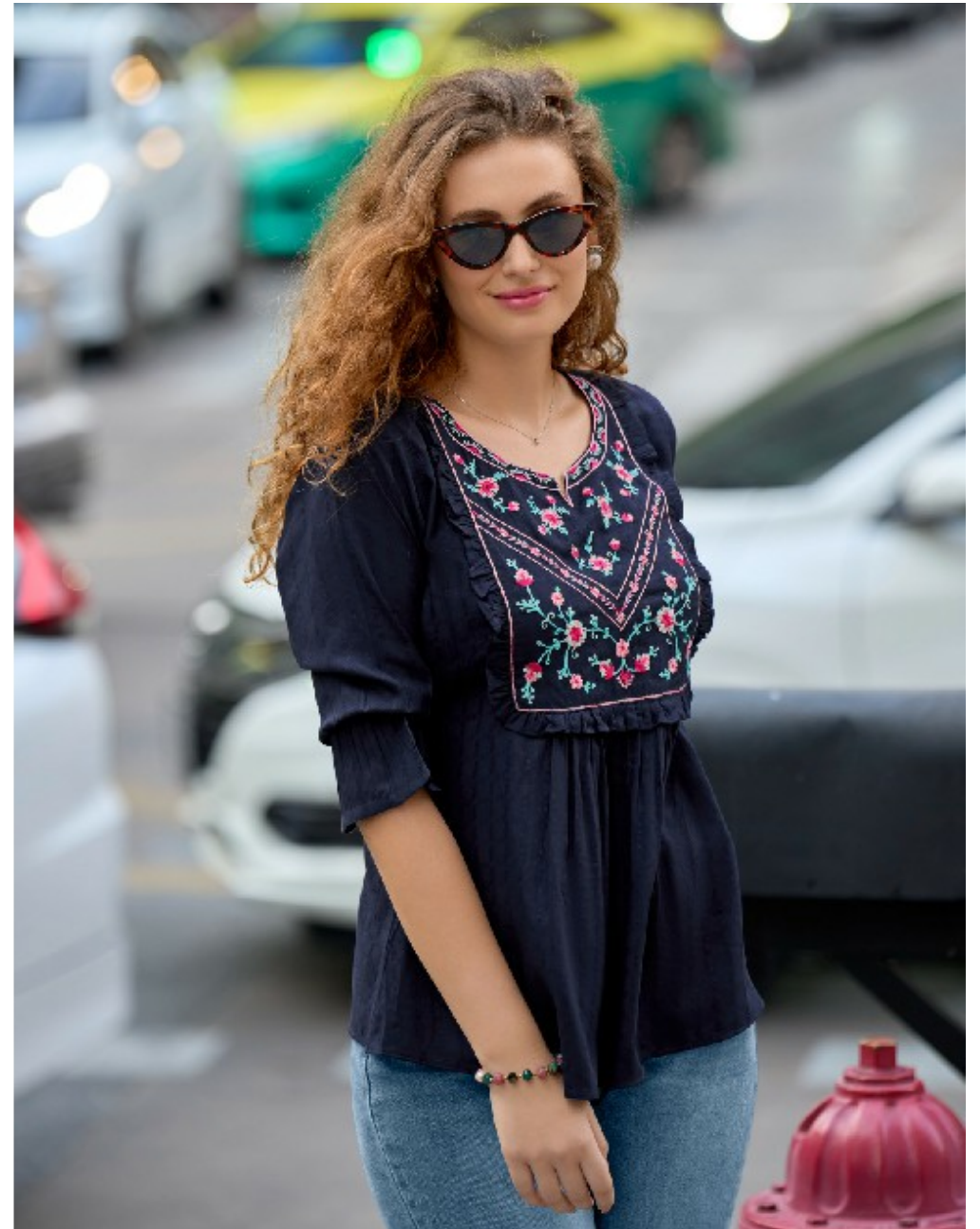


LILY & LALI[®]
GULS PRIDE
A PEEEL OF FASHION



Forget the rules. If you like it, wear it

LILY&LALI
DULCE DE
A MODA DE 1993



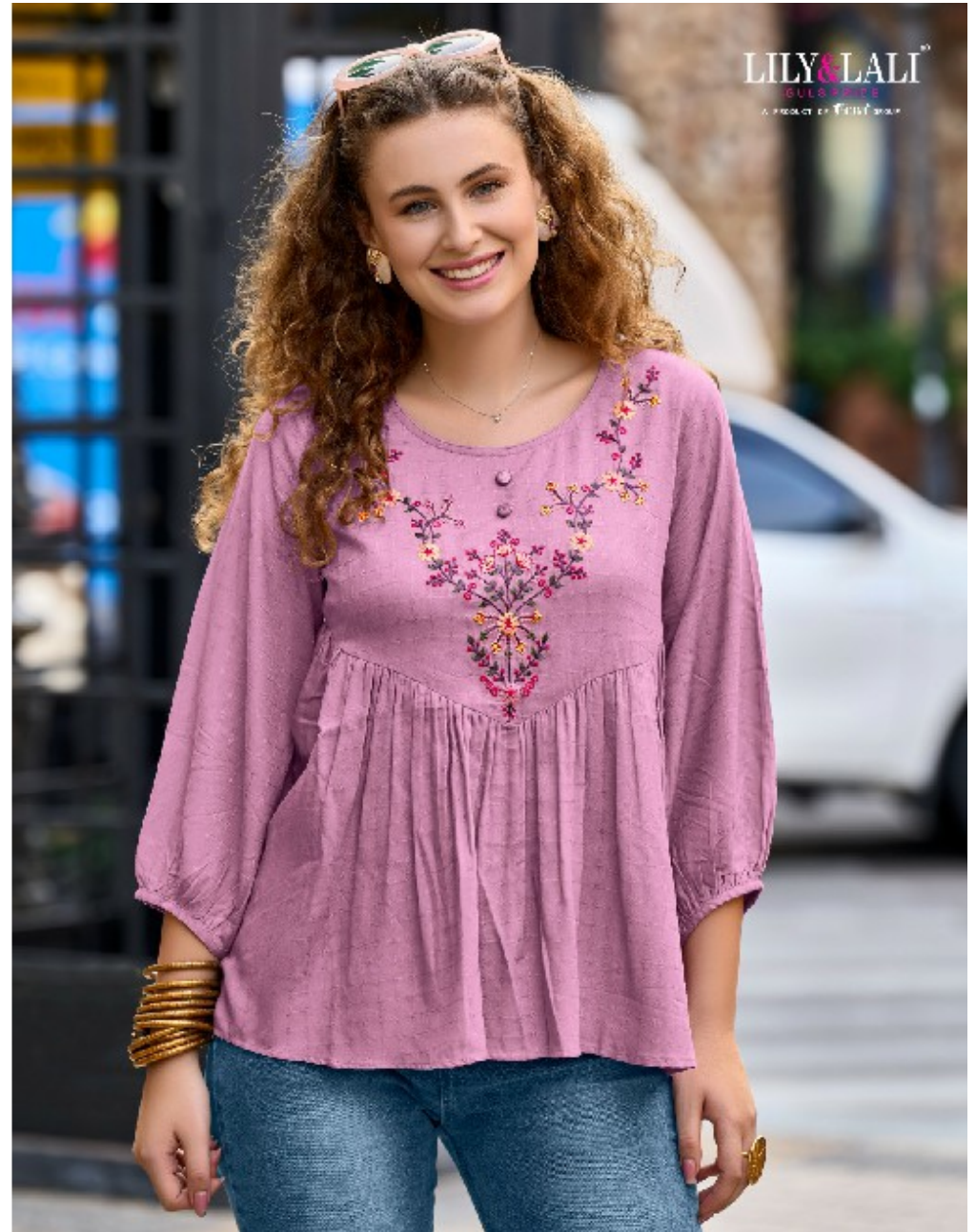




You don't have to be a model to gain attention. Wearing a dazzling Kurti is enough



18103





You don't have to be a model to gain attention. Wearing a dazzling Kurti is enough

LILY&LALI[®]
GULS TRIDE
A PART OF FINE ART



You don't have to be a model to gain attention. Wearing a dazzling Kurti is enough



18107





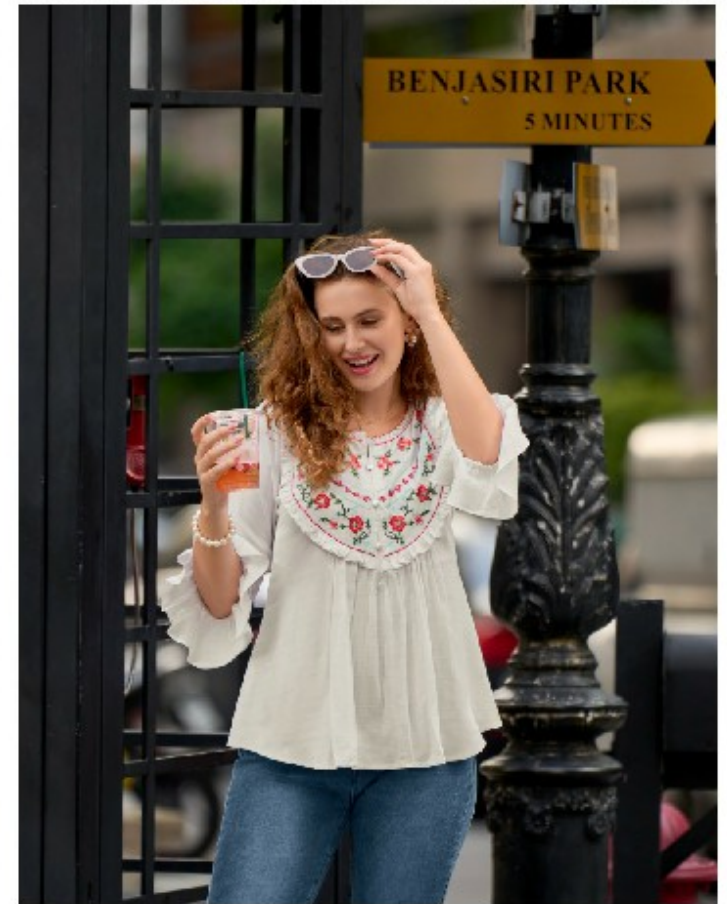
Forget the rules. If you like it, wear it



18105



LILY & LALI[®]
DESIGN BY FOTIS
A PRODUCT BY FOTIS GROUP



You can't scroll without complimenting my new Kurti swag

LILY&LALI
LIFE STYLE
A PROJECT OF **frans** GROUP



You don't have to be a model to gain attention. Wearing a dazzling Kurti is enough



Forget the rules. If you like it, wear it



18105



LILY & LALI[®]
WE APPRECIATE
A PRODUCT OF FIELD GROUP



You can't scroll without complimenting my new Kurti swag



18104





Life isn't perfect, but your Kurta can be



16101



LILY & LALI[®]
GULSHRIDE
A DIVISION OF FORTIS GROUP

You don't have to be a model to gain attention. Wearing a dazzling Kurti is enough



18102





Life isn't perfect, but your Kurti can be



18101





Life isn't perfect, but your Kurti can be

LILY&LALI[®]
SUEE PRIDE
A PRODUCT OF **INDIA** DESIGN



18101



18102



18105



18106



18103



18104



18107



18108