

Azara
Karachi Suit
URVASHI



An attire crafted in relaxed silhouettes.

This collection is of our ethnic inspired and we find DNA calling for women but on taking advantage for a subtle structure, we will a strong silhouettes.

Radhika[®]
FASHION
D.No.1029
A



Radhika®
FASHION
D.No.1029
B



Sheer
elegance
to admire!

The intricate sheer fabric is an epitome of sheer elegance and subtle styling. It is a perfect choice for the festive period. The overall look is a blend of traditional and contemporary.

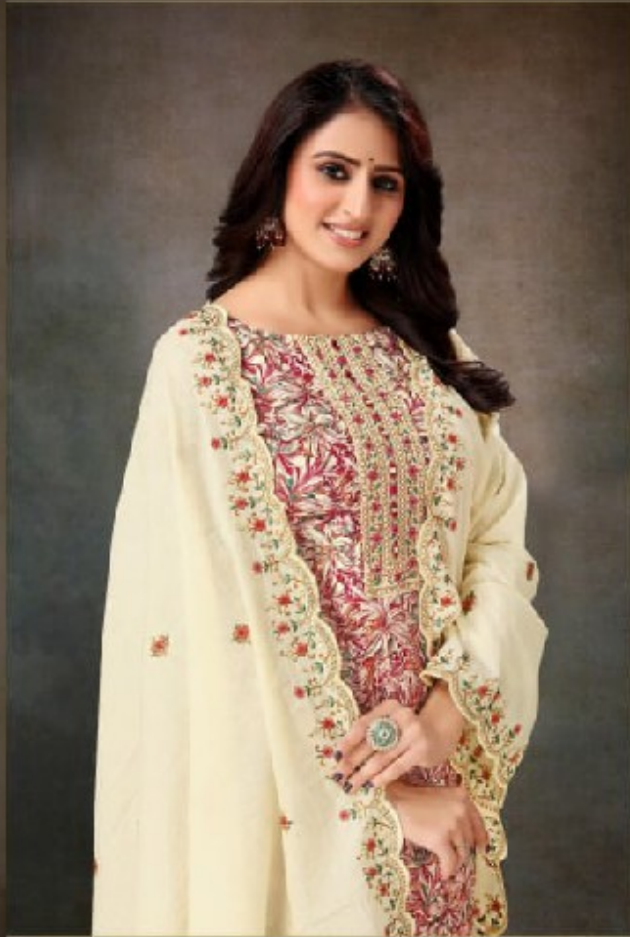


Radhika[®]
F A S H I O N
D.No.1029
C

Enrich the grandeur
of elegance.

The elegant design for the softest feel of the fabric and the grandeur in cutting and stitching are highlighted through the use of a scalloped, lace and floral design.





Prettiest patiyala staple

This collection is available in our brand DNO - looking for something that is unique for you, please visit our website at www.radhika.com

Radhika[®]
FASHION
D.No.1029
D



A PRODUCT BY



D.No.1029
A



D.No.1029
B



D.No.1029
C



D.No.1029
D