



त्रिराथ

THE TRIPATHI

INDO MODERN PATOLA

तुलसी-वन

TULSI-VAN

# तुलसी-वन

TULSI-VAN

INDO-MODERN PATELA

As more women became educated, globally savvy women preferred sarees customized in couture concepts and started favoring the pre-pleated style. Designers offer a variable rainbow of pre-draped hybrid sarees, saree gowns and sarees. Couturers replaced the pleats with masterful drapes and introduced a contemporary spin to the anantala.

**VIVIRATH**  
THE TRANSITION





**TRIRATH**  
THE TRADITION OF

तुलसी-वन

TULSI-VAN

TR-10322



  
त्रिराथ  
THE TRIP TO AN

तुलसी-वन

TULSI-VAN

TR-10323

  
त्रिराथ  
THE TRADITION

तुलसी-वन

TULSI-VAN

TR-10324



  
त्रिराथ  
THE TRADITION

तुलसी-वन

TULSI-VAN  
TR-10325



  
त्रिराथ  
THE TRADITION

तुलसी-वन

TULSI-VAN

TR-10327





**TRATH**  
THE ART OF

तुलसी-वन

TULSI-VAN

TR-10326





**TRIRATH**  
THE FINE LINE

तुलसी-वन

TULSI-VAN

TR-10328



**TRIRATH**  
THE TRADITION OF

तुलसी-वन

TULSI-VAN

TR-10329

**VRATH**  
THE TRADITION

तुलसी-वन

TULSI-VAN  
TR-10321





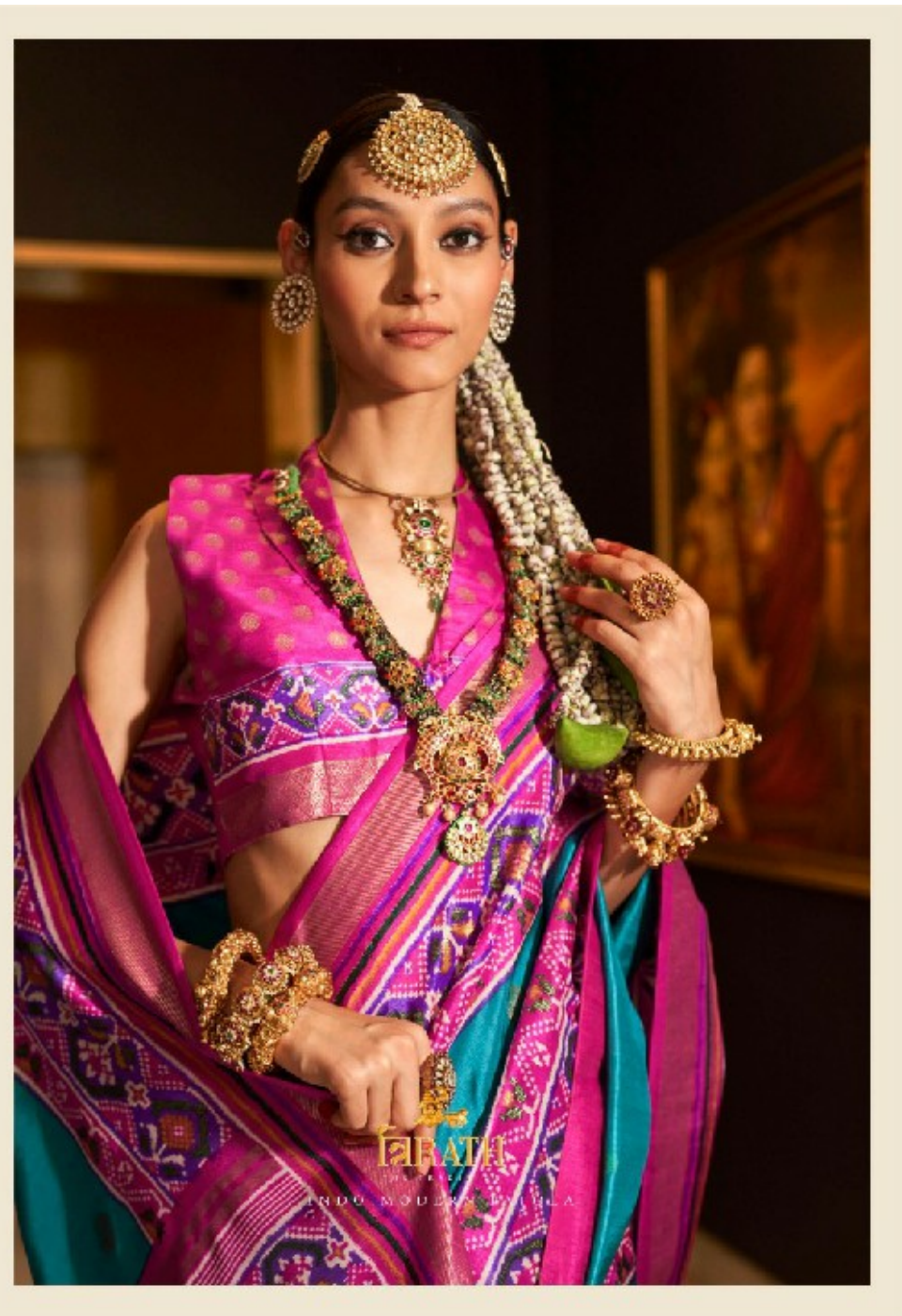






TR-10324







**FIRATH**  
INDO. MODERN. PATOLA



TR-10326



TR-10327





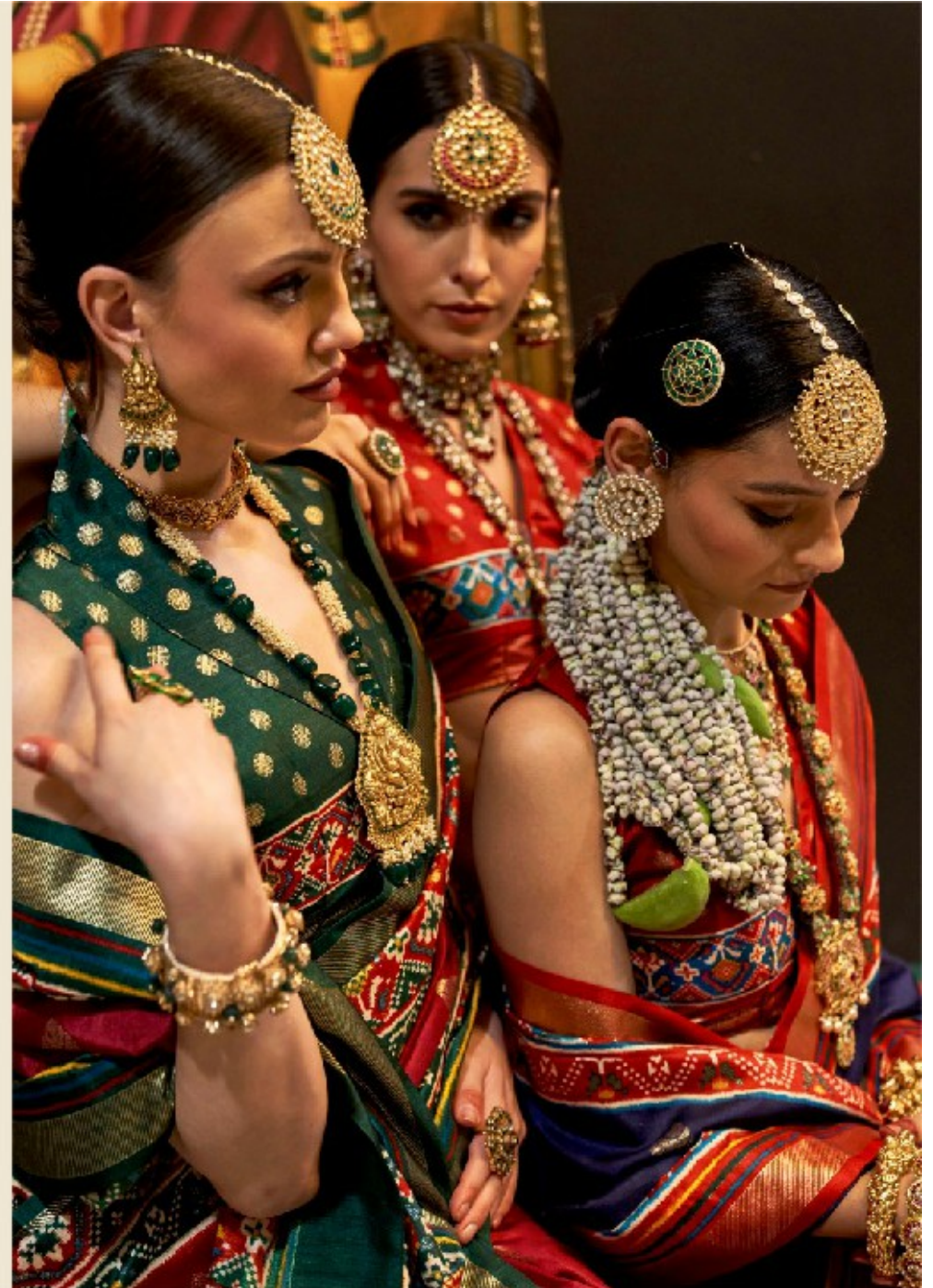
# तुलसी-वन

TULSI-VAN

INDO-MODERN FASHION

As time went by (1990s),  
gradually many women preferred sarees customized in  
couture concepts and started favoring the pre-pleated style.  
Designers offer a variable rainbow of pre-draped hybrid sarees,  
saree gowns and sarees. Couturers replaced the pleats  
with masterful drapes and introduced a subtle, tasteful  
spin to the ensemble.

  
VIVIRATH  
THE TRADITION





TR-10321



TR-10322



TR-10323



TR-10327



TR-10328



TR-10329



TR-10324



TR-10325



TR-10326

**TRIRATH**  
THE TRASTI CO.

BY DD MODERN PATOLA

तुलसी-वन

TULSI-VAN