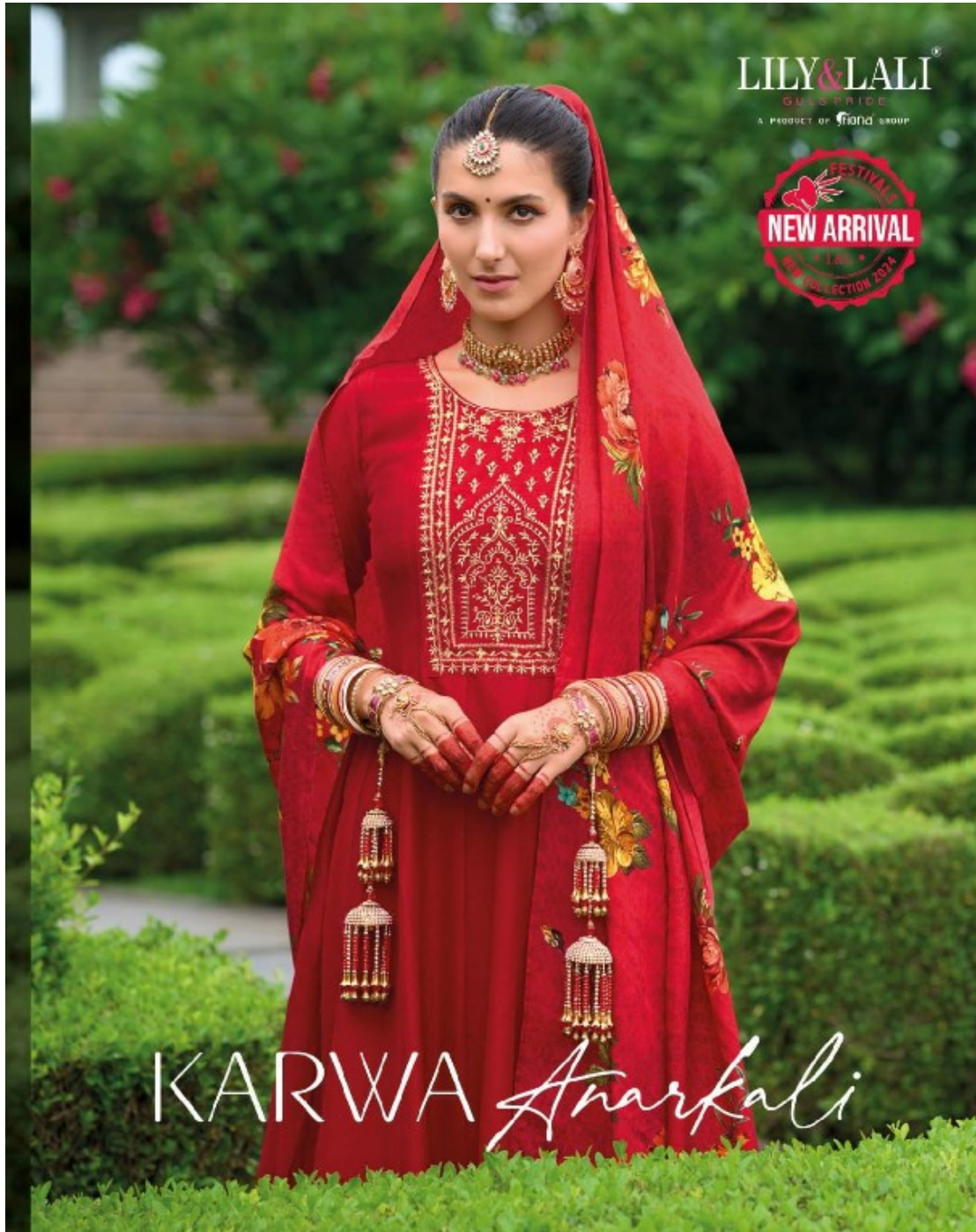


LILY & LALI
GULSHRICE
A PRODUCT OF Friend GROUP

FESTIVAL
NEW ARRIVAL
FALL
COLLECTION 2024

KARWA *Anarkali*



LILY&LALI[®]
SULS PRIDE
A PRODUCT OF PAKISTAN





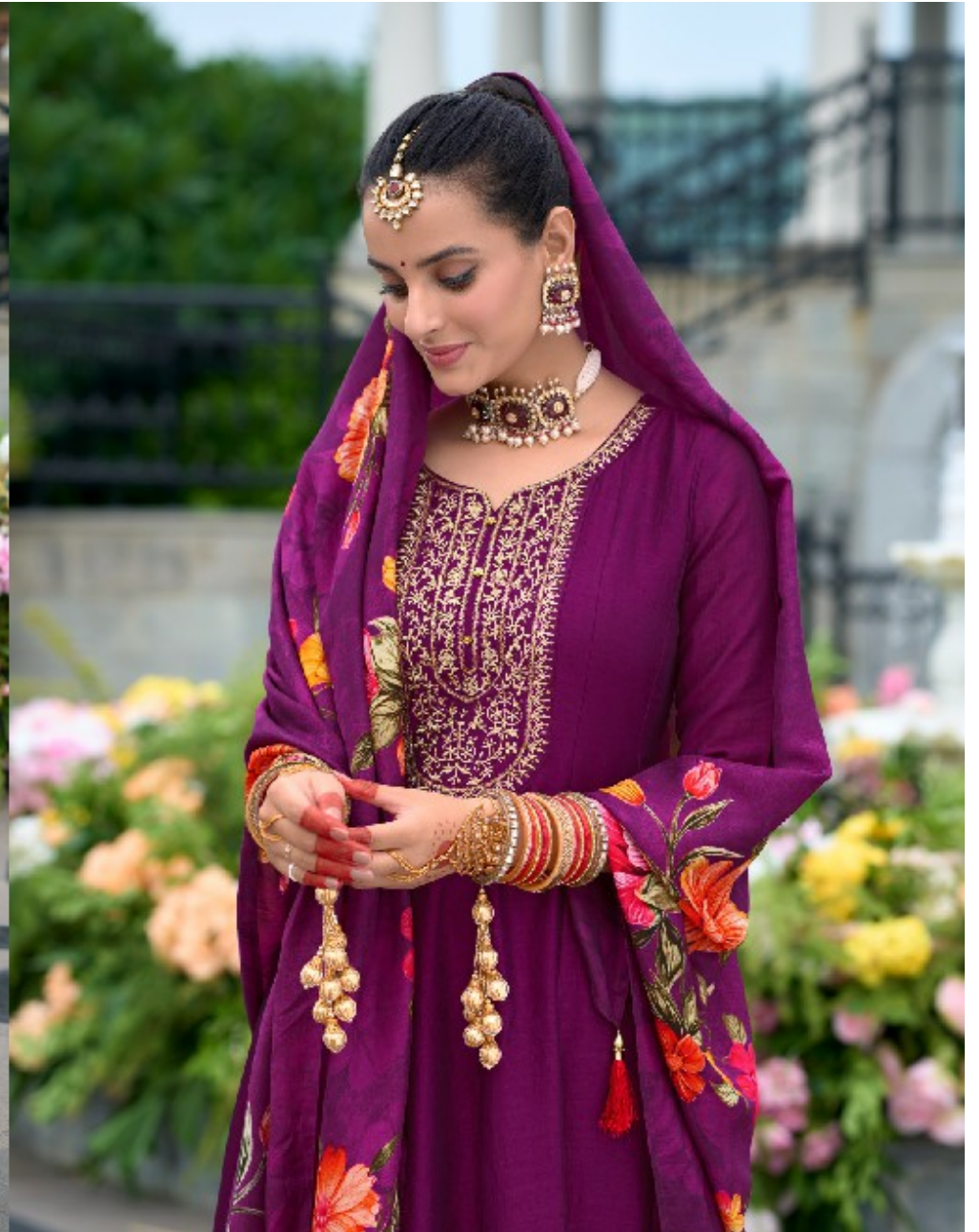
LILY & LALI
OLDSVILLE
A PRODUCT OF FREEMAN GROUP



ETHEREAL

COLLECTION IS REMINISCENT OF THE ERA GOVERNED BY
THE PERSIAN CIVILIZATION AND THE TRADITIONAL
COURT CEREMONIES REPRESENTING THE RICHNESS OF
THE SOUVENIR CULTURE







LILY & LALI
A PROPERTY OF THE LALI GROUP

LILY & LALI
GULS' FOLIO
A PRODUCT OF GULS' WORLD



STUNNING

THE FINEST VIRGIN FABRICS CREATED UNTOGETHER FOR
THE MOST ELEGANT & BEAUTIFUL OF THE
SILK & COTTON WEAVINGS





LILY & LALI
WEDDING WEAR
A DIVISION OF TIGER GROUP



LILY&LALI
GULS PRIDE
A BRAND BY PAKISTAN

TIMELESS

STYLE UNCHANGED, PASSION LIKE NEVER BEFORE. THE
MAYMAY PRIDE OF PAKISTAN. NOW IN YOUR
CELEBRATION OF CULTURE, TRADITION, LIFESTYLE, AND
SHEERLY BEAUTY. SEIZE THE WORLD AROUND YOU.





LILY & LALI[®]
GULS TRIDE
A COMPANY OF THE LAL GROUP



LILY & LALI
GOLD & SILVER
A MEMBER OF FIVELY

22505



LILY & LALI[®]
WOMEN'S WEAR
A DIVISION OF FALGUN

STUNNING

STYLING: ANITA KUMAR | CREATION: GURJIT
ASHWIN | ACCESSORIES: BHISHM AGGARWAL
COURTESY: LILY & LALI





LILY & LALI
DESIGNER
A PROPERTY OF TIGER BRAND

LILY&LALI[®]
GULS PRIDE
A PRODUCT OF VIKAS GROUP



22501



22502



22503



22504



22505



22506

KARWA Anarkali