



TRADITIONS

IN ORGANZA

DROPS OF SS'24



SAREE :

Fabric : Soft Silk Organza
Colors : Blush Pink

Design : This saree features a minimalist yet elegant design with subtle layers, the use of a graceful flow. The right hand adds a romantic touch.

SOFT PINK ORGANZA SAREE

DRS 41



BLOUSE:

Style : Sleeveless with a high neck and a back keyhole detail

Embellishments : Scalloped-edge handwork on blouse

Fit : Tailored for comfort and style

ADDITIONAL DETAILS:

Drape : Pre-stitched for a perfect drape

Accessories : Paired with delicate earrings and a bracelet.

#NEWCOLLECTION



A MAGICAL TIME WHERE FASHION
MEETS FANTASY

With a passion for design and an eye for detail, the fashion house of Awa Fashion perfectly creates a magical time where fashion meets fantasy of wearing traditions with class and glamour.





BLOUSE:

Style:
Sleeveless with a high neck

Embellishments:
Intricate handwork and
sequins around the blouse

Fit:
Designed for a sleek fit,
enhancing the saree's
regal appearance

ADDITIONAL DETAILS:

Drape:
Precision for
hazle-free wearing

Accessories:
Styled with statement earrings
and a cocktail ring

GOLDEN GLAM ORGANZA SAREE



SAREE:

Fabric: High-quality Silk Organza

Color: Golden Beige

Design: This ensemble is a masterpiece of design, with a shimmering finish,
ideal for evening events. The intricate layers add depth and movement to the attire.

DRS 36



SAREE :

Fabric : High-quality Silk Organza
Color : Golden Beige
Design : This saree showcases a sophisticated layered design with shimmering linings, ideal for evening events. The intricate layers add depth and movement to the drape.

BLOUSE:

Style : Sleeveless with a high-neck.

Embellishments : Intricate borders and cut-darts around the blouse.

Fit :

Designed for a sleek fit, enhancing the saree's regal elegance.

ADDITIONAL DETAILS:

Drape : Pre-stitched for hassle-free wearing.

Accessories : Styled with statement earrings and a matching ring.

DRS 36



GOLDEN GLAM ORGANZA SAREE

SAREE :

Fabric : Lustrous Silk Organza

Color : Peach

Design : Featuring a layered design with a subtle metallic sheen, this saree adds a contemporary twist to traditional wear. The layers give it a 3D effect, perfect for any festive occasion.



DRS 37

PEACH DREAM ORGANZA SAREE

BLOUSE:

Style :

Fitted blouse with a Mandarin

Embellishments :

Pink blouse and handkerchief intricately embroidered

Fit :

Crafted to accentuate the waist, complementing the saree's drape.

ADDITIONAL DETAILS:

Draper :

Pre-stitched for ease of wear, maintaining the integrity of the layers.

Accessories :

Coordinate with elegant jewelry and bangles to complete the look.



PEACH DREAM ORGANZA SAREE



SAREE:

Fabric: Luxurious Silk Organza

Color: Peach

Design: Featuring a layered design with a soft glow metallic sheen, this saree adds a contemporary twist to traditional wear. The layers give it a voluminous look, perfect for any festive occasion.

DRS 37



BLOUSE:

Style:

Flare sleeves with a wrap-like

Embellishments:

Pink blouse and hardware
bell intricate prints

Fit:

Crafted to accommodate the waist,
complementing the saree's drape

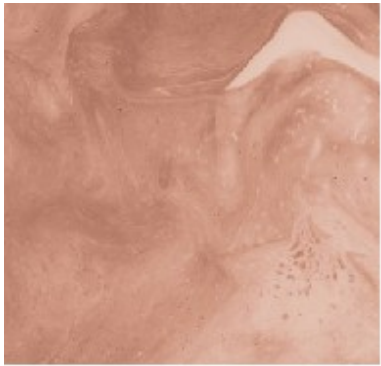
ADDITIONAL DETAILS:

Draps:

Pre-stitched for ease of wear,
maintaining the
integrity of the layers

Accessories:

Complated with elegant
earrings and bangles
to complete the look



BLOUSE:

Style :
Short Tangled sleeves
with a V-neckline

Embellishments :
Embroidery and sequin
work on the bodice

Fit :
Perfectly tailored to
enhance the
overall silhouette



ADDITIONAL DETAILS:

Draps :
Pre-stitched for
convenience

Accessories :
Styled with silver-toned
earrings and a ring



SKY BLUE ORGANZA SAREE



SAREE :
Fabric : exquisite Silk Organza
Color : Sky Blue
Detail : This saree features a shimmering metallic thread design with a hint of metallic sheen.
The blouse is fully stitched, adding to the sophisticated look of the look.

DRS 38

SKY BLUE ORGANZA SAREE



SAREE :

Fabric : Luxurious Silk Organza

Color : Sky Blue

Design : This saree looks as simple yet elegant design with a hint of metallic shimmer. The layers are subtle, adding to the sophistication of the look.

DRS 38



BLOUSE:

Style :

Short-sleeved blouse with a V-neckline

Embellishments :

Fine, delicate sequin work on the bodice

Fit :

Perfectly tailored to enhance the overall silhouette

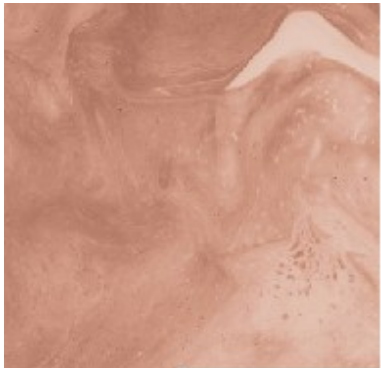
ADDITIONAL DETAILS:

Drape :

Pre-stitched for convenience

Accessories :

Styled with statement earrings and a ring



BLOUSE:

Style:
Bell sleeves with a V-neckline

Embroidery:
Detailed Band work on
the shoulders and neckline,
Paired with matching belt.

Fit:
Designed to provide
a structured fit



ADDITIONAL DETAILS:

Drape:
Pre-stitched for ease of wear

Accessories:
Complemented with matching
green earrings and a bangle

DRS 39

EMERALD GREEN ORGANZA SAREE



SAREE :

Fabric : Rich Silk Organza

Color : Emerald Green

Design : A striking saree with a hybrid design that highlights the richness of the fabric. The metallic sheen adds a glamorous touch, making it suitable for festive occasions.

EMERALD GREEN ORGANZA SAREE



SAREE:

Fabric: - Pure Silk Organza

Color: - Emerald Green

Design: - A solitary saree with a layered design that highlights the intricate details of the fabric. The metallic sheen adds a glamorous touch, making it suitable for festive occasions.

DRS 39



BLOUSE:

Style: - Bell sleeves with a V-neckline

Embroidery: - Detailed bead work on the sleeves and neckline. Paired with matching belt.

Fit: - Designed to provide a structured fit

ADDITIONAL DETAILS:

Drape: - Pre-stitched for ease of wear

Accessories: - Complete styled with matching green earrings and a bangle



SAREE:

Fabric: Premium Silk Organza

Color: Aqua Blue

Design: This saree features a stunning layered design with a subtle shimmer that enhances the elegance. The layers cascade gracefully, creating a fluid and ethereal look.

ELEGANT AQUA BLUE ORGANZA SAREE



BLOUSE:

Style: Sleeveless, square neckline

Embroidery: Delicate handwork around the neckline and belt, adding a touch of sparkle.

Fit: Tailored to perfection, providing a flattering silhouette.

ADDITIONAL DETAILS:

Draps: Pre-stitched for convenience, ensuring a perfect drape every time.

Accessories: Pair with matching aqua blue bangles and a statement ring.



DRS 40



BLOUSE:

Style:
Sleeveless, square neckline

Embroidery:
Delicate Hand work around the neckline and belt, adding a touch of sparkle

Fit:
Tailored to perfection, providing a flattering silhouette

ADDITIONAL DETAILS:

Drape:
Perfect drape for occasions, ensuring a perfect drape every time

Accessories:
Paired with matching aqua blue earrings and a statement ring

ELEGANT AQUA BLUE ORGANZA SAREE



SAREE:

Fabric: Premium Silk Organza

Color: Aqua Blue

Design: This saree features a stunning layered design with a subtle shimmer that enhances the elegance. The layers cascade gracefully, creating a fluid and whimsical look.

DRS 40



BLOUSE:

Style : Sheer with a high neck and a back keyhole detail.

Embellishments : Subtle cut-dance for a delicate finish.

Fit : Tailored for comfort and style.

ADDITIONAL DETAILS:

Draps : Presented for a perfect drape.

Accessories : Paired with a delicate earring and a bracelet.

SOFT PINK ORGANZA SAREE



DRS 41

SAREE :

Fabric : Soft Silk Organza

Color : Blush Pink

Design : The saree features a minimalist yet elegant design with subtle layers that create a graceful flow. The light fabric adds a romantic touch.