

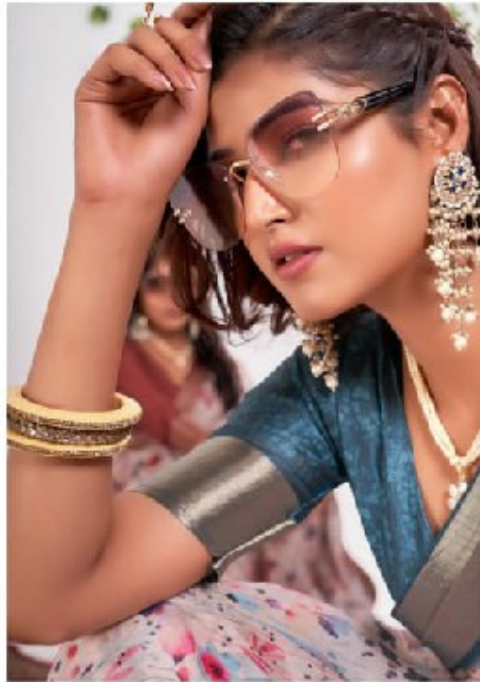


Kalindi

VOL -4







D.NO. 3004



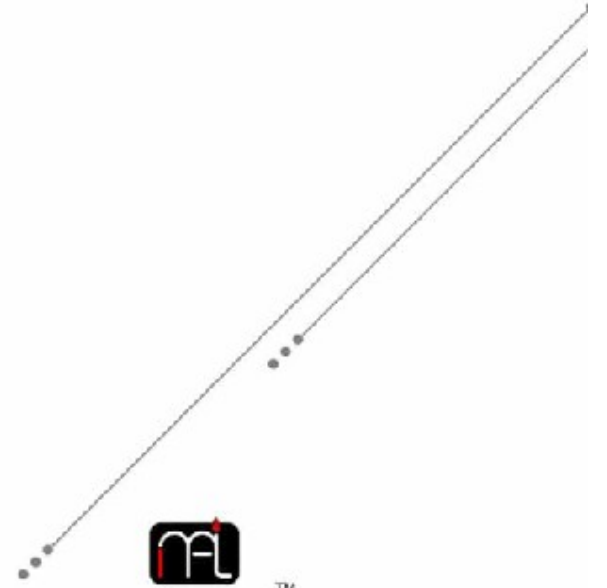




THE FASHION INDUSTRY IS CONSTANTLY EVOLVING AND INNOVATING. WE AT MAHAMANI CREATION UNDERSTAND THIS AND BRING YOU THE LATEST TRENDS IN FASHION. OUR SAREES ARE DESIGNED WITH CARE AND ATTENTION TO DETAIL. WE USE HIGH-QUALITY FABRICS AND EMBROIDERY TO BRING YOU THE MOST BEAUTIFUL AND COMFORTABLE SAREES. WE ARE COMMITTED TO BRINGING YOU THE BEST IN FASHION. WE ARE THE ONLY SAREE BRAND THAT OFFERS A COMPLETE RANGE OF SAREES FOR EVERY OCCASION. WE ARE THE ONLY SAREE BRAND THAT OFFERS A COMPLETE RANGE OF SAREES FOR EVERY OCCASION. WE ARE THE ONLY SAREE BRAND THAT OFFERS A COMPLETE RANGE OF SAREES FOR EVERY OCCASION.

D.NO. 3006







mahamani™

 CREATION

IN THE UNITED STATES OF AMERICA: THIS DESIGN IS THE PROPERTY OF MAHAMANI CREATION. ALL RIGHTS RESERVED. NO PART OF THIS DESIGN MAY BE REPRODUCED OR TRANSMITTED IN ANY FORM OR BY ANY MEANS, ELECTRONIC OR MECHANICAL, INCLUDING PHOTOCOPYING, RECORDING, OR BY ANY INFORMATION STORAGE AND RETRIEVAL SYSTEM. IN THE REST OF THE WORLD: THIS DESIGN IS THE PROPERTY OF MAHAMANI CREATION. ALL RIGHTS RESERVED. NO PART OF THIS DESIGN MAY BE REPRODUCED OR TRANSMITTED IN ANY FORM OR BY ANY MEANS, ELECTRONIC OR MECHANICAL, INCLUDING PHOTOCOPYING, RECORDING, OR BY ANY INFORMATION STORAGE AND RETRIEVAL SYSTEM.

D.NO. 3007





IN THE EVENT OF THE ABOVE MENTIONED SALE, THE COMPANY HEREBY DISCLAIMS ANY AND ALL WARRANTIES, INCLUDING WARRANTIES OF MERCHANTABILITY AND FITNESS FOR A PARTICULAR PURPOSE, AND THE COMPANY SHALL NOT BE LIABLE FOR ANY DAMAGES, INCLUDING CONSEQUENTIAL DAMAGES, ARISING OUT OF OR FROM THE USE OF ANY PRODUCTS PURCHASED FROM THE COMPANY. THE COMPANY SHALL NOT BE RESPONSIBLE FOR ANY DAMAGES, INCLUDING CONSEQUENTIAL DAMAGES, ARISING OUT OF OR FROM THE USE OF ANY PRODUCTS PURCHASED FROM THE COMPANY. THE COMPANY SHALL NOT BE RESPONSIBLE FOR ANY DAMAGES, INCLUDING CONSEQUENTIAL DAMAGES, ARISING OUT OF OR FROM THE USE OF ANY PRODUCTS PURCHASED FROM THE COMPANY.

D.NO. 3009





D.NO. 3012



3001



3002



3003



3004



3005



3006



3007



3008



3009



3010



3011



3012