

SHUBH SHREE
CREATION

Toral Digital

Magnificence MODERN

"Eleven Year Process with the Timeless Charm of Our Series, Each Piece a Microcosm of Artistry. Experience the Magic of Tradition Draped in Modern Splendor."





SHUBH SHREE
CREATION

Luxurious
FASHION

"Immerse Yourself in the Exquisite Craftsmanship of Our
Sarees Where Every Stitch Carries the Legacy of
Skilled Artisans - Wear Art, Wear Elegance, Wear Our Sarees."



*Graceful
Folds*

<<D.No.1001>>

"In the graceful folds of sarees, find not just fabric but a reflection of a culture's heritage, a celebration of its diversity, and an expression of its timeless beauty."





Adorned
IN ELEGANCE

Wearing Dreams Stitched with Confidence –
Every Girl, Every Saree, A Tale of Radiance.*



Expression SELF

"In the crucible of a year, discover the magic of transformation, as every life whips out stories of confidence, beauty, and the power of self-expression."





Modernity
MEETS

"Wrap yourself in the ethereal
honey of sarees, where tradition meets
modernity in a seamless embrace of elegance."

<<D.No.1004>>




SHUBH SHREE
CREATION



Beautiful
ATTIRE
Give into the exotic confluence of
today and tomorrow in

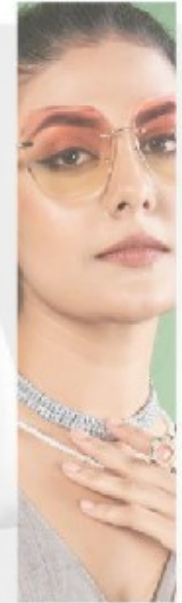
<<D.No.1005>>



<<D.No.1006>>



SHUBH SHREE
CREATION



Reflection FABRIC

"In the graceful folds of sarees, find our new fabric: like a reflection of a person's heritage, a celebration of its diversity, and an expression of its timeless beauty."



Reflection FABRIC

"In the graceful folds of sarees, one sees not just fabric, but a reflection of a culture's heritage, a celebration of its diversity, and an expression of its timeless beauty."



SHUBH SHREE
CREATION

<<D.No.1008>>

A collage of diamond-shaped images showing close-ups of jewelry and saree details. The images include: a woman's face wearing a necklace and earrings; a woman's neck wearing a pearl necklace; a woman's face wearing glasses; a woman's hands wearing rings; a woman's face wearing sunglasses; and a close-up of a saree's border. A central green circle contains the logo for 'SHUBH SHREE CREATION' which is a stylized gold symbol above the text 'SHUBH SHREE CREATION' with a small red triangle below it.

Expression
SELF

"In the embrace of a saree, discover the magic of transformation, serenity, the timeless beauty of confidence, grace, and the power of self-expression."



SHUBH SHREE
CREATIONS



Womanhood
GARMENT

*"More than a garment, a symbol of heritage,
a statement of grace, an embodiment of womanhood."*

<<D.No.1009>>



Timeless CLASSIC

"Have a treasury of colors, a treasury of textures, an ode to
timeless elegance that transcends generations."









Beautiful

Give in to the exotic confidence of today and tomorrow in

<<D.No.1013>>





Expression
WORLD

"Dive into a World of Elegance and
Expression with Our Saree Collection."



SHUBH SHREE
CREATION

<<D.No.1014>>

Explore
CULTURE



"From the Majestic Banarasi to the Ethereal Chanderis, Our Sarees Reflect the Rich Tapestry of Indian Culture - Explore Our Collection and Allow Yourself to History."



SHUBH SHREE
CREATION

<<D.No.1015>>



Celebrate INDIAN

"Celebrate the Diversity of India: Textiles, Adorn Yourself
in the Finest Silks, Cottons, and Linens - Our Sarees
Showcase the Magnificence of India's Weaving Legacy."



<<D.No.1016>>





SHUBH SHREE
CREATION



Modernity
MEETS

"Step into a World Where Tradition Meets Modernity,
Where Every Saree is a Fusion of Classic Heritage and
Contemporary Chic - Explore Our Curatorial and Redefine Style."

<<D.No.1017>>







<D.No.1001>

<D.No.1002>

<D.No.1003>

<D.No.1004>

<D.No.1005>



<D.No.1011>

<D.No.1012>

<D.No.1013>

<D.No.1014>

<D.No.1015>



<D.No.1006>

<D.No.1007>

<D.No.1008>

<D.No.1009>

<D.No.1010>



<D.No.1016>

<D.No.1017>

<D.No.1018>

<D.No.1019>

<D.No.1020>